

Active Travel Newsletter

December 2024

Welcome to our newsletter!

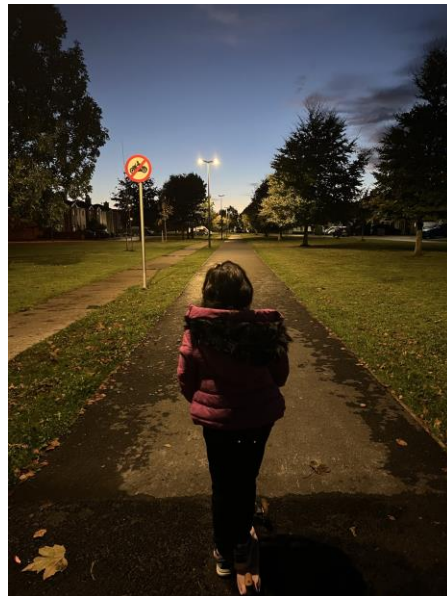
We're excited to share updates on projects that are making our city and county a more sustainable, healthier, and safer place to live.

From new footpaths to improved school zones, we're dedicated to creating a network of active travel options that cater to all ages and abilities to make a positive impact on our communities.



activetravel@kilkennycoco.ie

Active Travel is walking, wheeling or cycling for everyday journeys



Safer walking and cycling facilities help more people to choose to walk or cycle for short trips. This includes new pedestrian crossings, upgrade of existing footpaths, making side road easier for pedestrians to cross, and new cycle paths.

Traffic calming measures slow speeds creating a safer environment for all road users. Measures include narrowing of carriageways, tightening of junctions and raised pedestrian crossings. The addition of trees, other greenery and artwork can also contribute to a calmer environment.

Projects are funded by the Department of Transport through the National Transport Authority's Active Travel Programme and are managed and delivered by the Local Authorities.

The key aim is to increase the number of walking and cycling networks so that walking, cycling and public transport will account for 50% of all journeys made by 2030.

Complete: Loughboy Park, Kilkenny City

Loughboy Park in Kilkenny City, is situated between the Bohernatounish and Outrath Road, surrounded by a large residential area with great permeability to local schools, shops and services. The improved links help make the area more pleasant for walking and cycling to nearby schools; Presentation Secondary School and Gaelscoil Osraí and The Watershed Sports Centre. Additional planting is planned for 2025.

We extend our thanks to the Kilkenny Area Engineering Team for their excellent work in completing this scheme on behalf of Active Travel.



Complete: Bridge St., Callan

A temporary one-way system came into effect in 2020 under Town and Village Accelerated Measures due to Covid funding. The purpose of this scheme was to make the one-way system permanent and to improve the footpaths and junctions to make it safer for pedestrians. The scheme includes three ramped zebra crossings with tactile pavement to assist those with visual impairments and flashing beacons, powered by solar panels. The improved footpaths and public realm areas has a high-quality limestone finish. The scheme also included all associated drainage works.

This project was delivered in partnership with the Thomastown – Callan Area Engineering Team



Complete: Pococke Park, Kilkenny City

Pococke Park is located between the Johnswell Road and the New Orchard Road. The scheme has greatly enhanced the walking and cycling facilities through the upgrade of an existing – almost unusable – cycle track. The scheme has built upon other recent improvement works in this area, which joins up residential areas with local sports facilities, shops, neighbourhood and medical centre and John's Senior school. It is already well used in the locality as an amenity. Additional plans for 2025 include a zebra crossing on the Johnswell Road and further planting.

We extend our thanks to the Kilkenny Area Engineering Team for their excellent work in completing this scheme on behalf of Active Travel.



Complete: Dean Cavanagh to Fatima Place

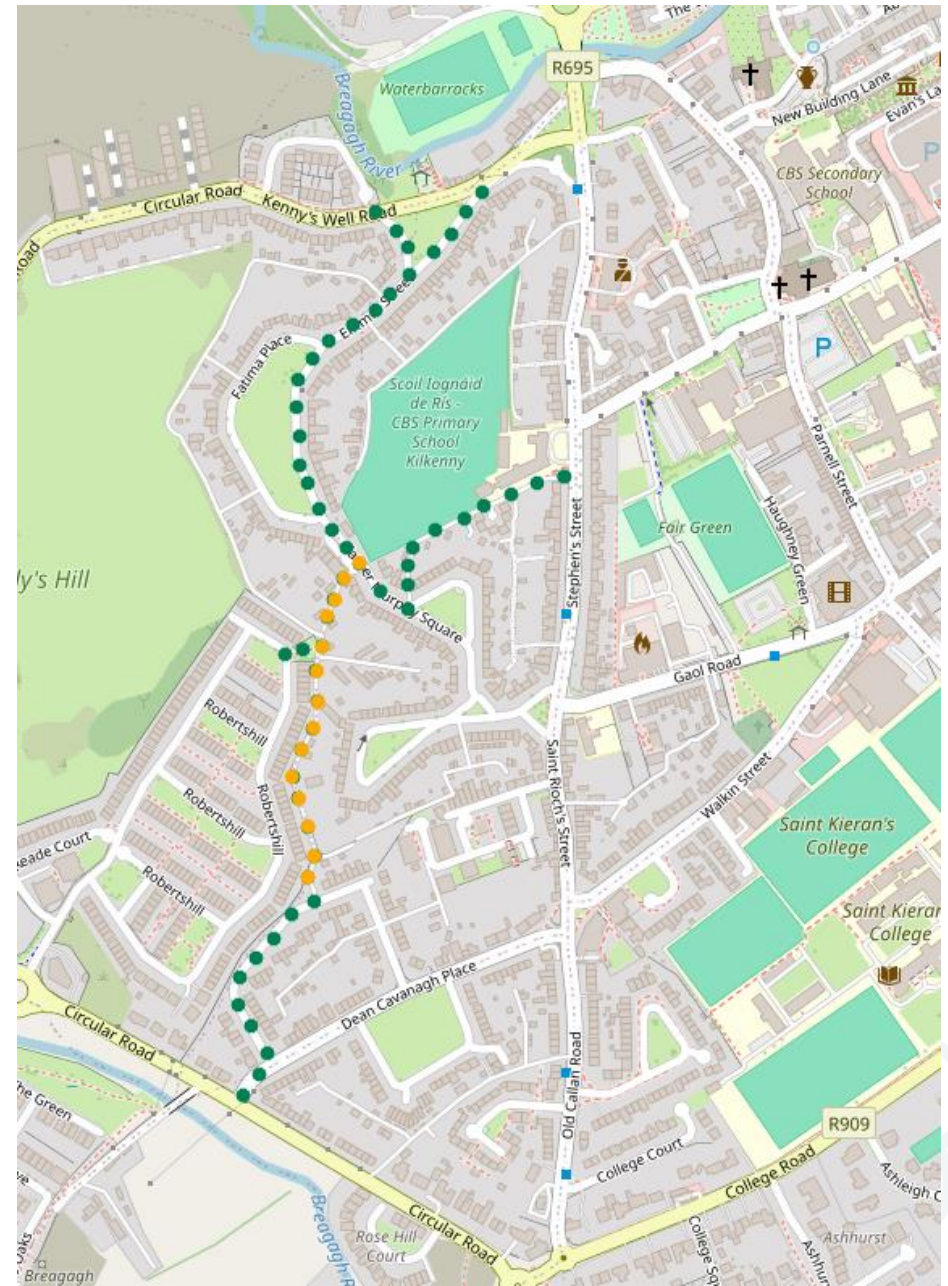
This scheme improves the connection from the Kennyswell Road to the Circular Road, increasing the connectivity between Robert's Hill, Dean Cavanagh Place, Saint Francis Terrace, Fatima Place, Saint Teresa's Terrace, Fr. Murphy Square and the City Centre. This route will also serve the new housing under development in the Breagagh Valley.

- Existing connectivity along old car roads and quiet roads
- Improved section

We extend our thanks to the Kilkenny Area Engineering Team for their excellent work in completing this scheme on behalf of Active Travel.

Sustainable Urban Drainage Systems

Vertical planting, honeysuckle and ivy, will be incorporated along this route. The beds will be installed at low points along the route, to capture rainfall, allowing it to soak into the ground. These small sustainable urban drainage systems help manage rainfall close to where it falls, slowing down run-off before it enters watercourses, minimising pollution and managing the impact on water quality of local water bodies.

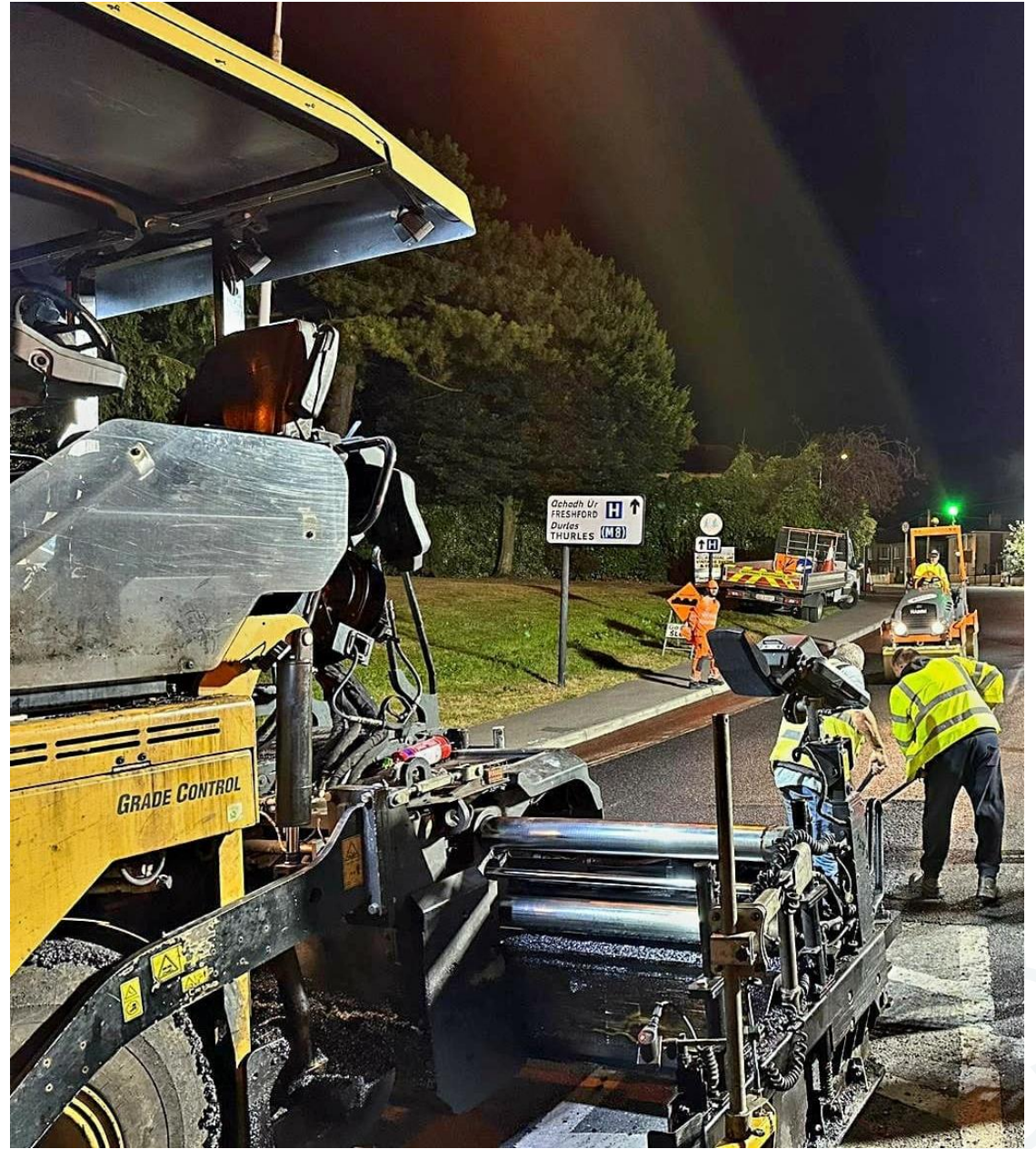


Under Construction: Safe Routes to School, Freshford Rd and Granges Rd

Two of the largest schools in Kilkenny are situated between the Granges and Freshford Road, two busy routes into Kilkenny City. Previously, the footpaths on these routes were unusable due to illegal parking at school times and when surveyed, students in these schools have consistently stated that lack of safety and heavy vehicular traffic were the main barriers to walking or cycling to school. The measures included on the scheme were designed based on survey findings, a road safety audit and consultations with the school communities.

This scheme consists of 11 new crossings, reduced carriage widths, improved footpaths and cycle paths and tightened junctions on the routes. The measures will greatly improve the walking and cycling infrastructure and calm the traffic on these routes, creating a safer, more comfortable environment for the large number of children and young people attending the schools. This scheme aims to encourage independent journeys for all, particularly for children and young people, reducing the demand for companion journeys.



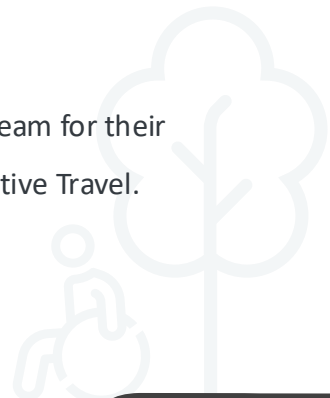




The works on this scheme are due for completion early in 2025. This will involve the resurfacing of the cycle tracks on Freshford Road and protection of the cycle tracks with bollards.

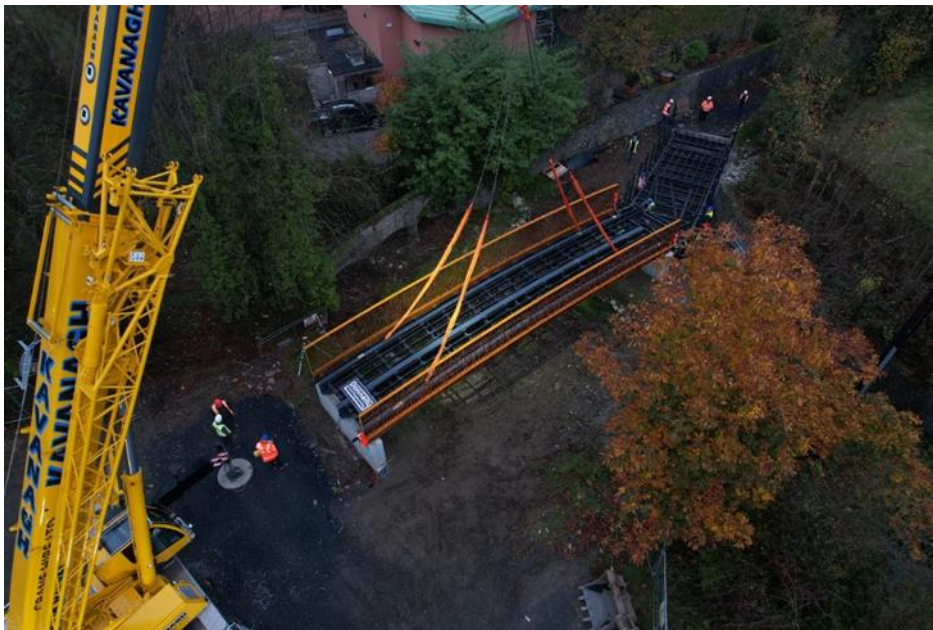
The Safe Routes to School programme is delivered by An Taisce, Kilkenny County Council and the National Transport Authority.

We extend our thanks to the Kilkenny Area Engineering Team for their excellent work in completing this scheme on behalf of Active Travel.



Under Construction: Coote's Lane Connectivity to Ring Road

Coote's Lane bridge was installed late in 2024 at an historic crossing point on the Breaghagh at the bottom of Coote's Lane. The bridge will complete the link from Coote's Lane to the Ring Road and is a valuable amenity for the residential communities to the west of the city, linking residential areas on the Callan Road with the city centre, improving routes to schools and providing an attractive looped walk for local residents.



Under Construction: Coote's Lane

Place-making

The story of the lane will be told by a series of interpretive panels. During the medieval period Coote's Lane was outside of the city walls that marked the location of the limit of the medieval city. The commonage, i.e. the land held in common by the burgesses of the town, stretched for two miles outside the town walls and was used for the shooting and archery by the townspeople.

The first edition 6" to a mile scale Ordnance Survey maps of the area date to 1839-40. This map depicts the area of Coote's Lane as an existing roadway or lane that follows the layout of the extant Coote's Lane, with farmland on either side. The lane is named as 'Water's Lane' and is also identified as the 'Municipal Boundary'. There is an existing post medieval river crossing at the Breagh River, consisting of cobble sized blocks, set together in a lime-mortar bed. The new bridge is situated to the south of this crossing.



Under Construction: Safe Routes to School

Duiske College and Graiguenamanagh Boy's National School

The three schools in Graiguenamanagh were selected for Round Two of the Safe Routes to School programme. Following consultation with the schools, a suite of measures were identified.

The pedestrian link from Aldi via Well's Lane was completed, this is an ideal park and stride location for the school and a valuable local amenity. Works included a ramped zebra crossing on Mill Rd, resurfacing of Duiske Lane and footpath improvements on High St. to complete the link and enhance pedestrian safety.

At the boy's school, a pedestrian crossing was installed to link with the footpath to the boat house. There were also improvements to the footpaths and to the bus drop off area to increase pedestrian safety.



Under Construction:

Graiguenamanagh Safe Routes to School, Scoil Mhuire Gan Smal

Scoil Mhuire Gan Saml is located on Convent Lane. Pedestrian safety will be greatly enhanced by new footpaths, junction tightening and new crossings. The opportunity has also risen to provide a rain garden on Convent Lane. The primary purpose of a rain garden is to reduce runoff, so it should be placed in a location enabling the garden to collect water. The photos below show some early stages of construction.

We extend our thanks to the Callan-Thomastown Area Engineering Team for their excellent work on this scheme on behalf of Active Travel.



What is a Rain Garden?

Every time it rains, water runs off impermeable surfaces, such as roofs or roads, collecting particles of dirt, chemicals, oil, and other pollutants along the way. Rain gardens collect rainwater runoff, allowing the water to be filtered by vegetation and percolate into the soil, filtering out pollutants and protecting our waterways.

They consist of mixed planting into a specially designed engineered soil which is usually contained within an engineered structure. Underground drainage is included to carry away rainwater runoff from the surrounding area that has percolated through the planted area.

Schemes at Feasibility or Planning Stage

Enhanced Pedestrian and Cyclist facilities on the Ring Road

Kilkenny County Council is working with Transport Infrastructure Ireland to improve the pedestrian and cyclist crossing facilities on the ring road. There are ten junctions along the road and all junctions are currently going through a design process. Junction treatments will then be prioritised for implementation.

Enhanced Pedestrian & Cyclist Facilities on the Radial Routes within Kilkenny City

The radial routes approaching Kilkenny City from the ring road are at various stages of feasibility and design. The Waterford Road will go through the planning process in 2025.

Linear Park Boardwalk, Kilkenny City

The upgrade of the walking and cycling facilities at Linear Park is at feasibility stage. This project includes an off-road tie-in linking the city to the Dublin Road via the Ossory Pedestrian Bridge.

Greensbridge Upgrade, Kilkenny City

The feasibility of an upgrade to the walking and cycling facilities at Green's Bridge is currently being investigated.

Northern River Crossing, Kilkenny City

The provision of a new river crossing north of Green's Bridge is at concept stage.

