

Kilkenny County Council - Incremental Purchase Scheme

Six Newly Built Affordable Homes for Sale

Nos. 1 – 6, Hoban Park, Callan, Co. Kilkenny

Purchase Price: €230,431 - subject to discount (40%-60%) based on household income

Kilkenny County Council have 6 x 3 bed 2 storey semi detached A rated houses available as affordable housing for sale in Hoban Park, Callan. These houses are available for purchase at a discount, based on household income, to qualified candidates under the **Incremental Purchase Scheme**.



These homes form part of a 38 new A-rated energy efficient homes development and face directly onto Fair Green Lane - an established residential area close to Callan Town Centre.

The scheme was designed by Reddy Architecture and Urbanism and are bright and thoughtfully laid-out, with plenty of storage space throughout. Fixtures and fittings in the kitchen, utility and bathrooms are provided. Floor coverings provided in bathroom areas. Decorated in a neutral colour scheme throughout.

Each house comes with private garden space and driveway parking. Garden sizes vary.

Heating / Hot water provided via Air to Water Heat Pump System.

Accommodation: - Total Floor Area 105m²

Ground Floor:-	Lobby, Entrance Hall with understairs storage, Sitting Room, Kitchen, Utility, Downstairs WC
----------------	--

First Floor:-

Double Room, Twin Room, Single Room, Family Bathroom, Storage Press

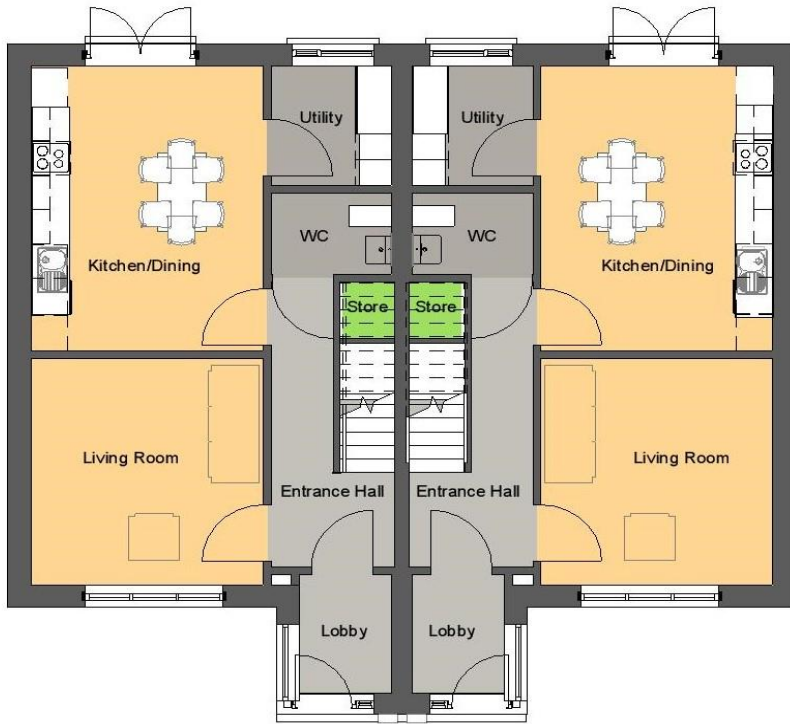
Site Layout (Not to Scale)



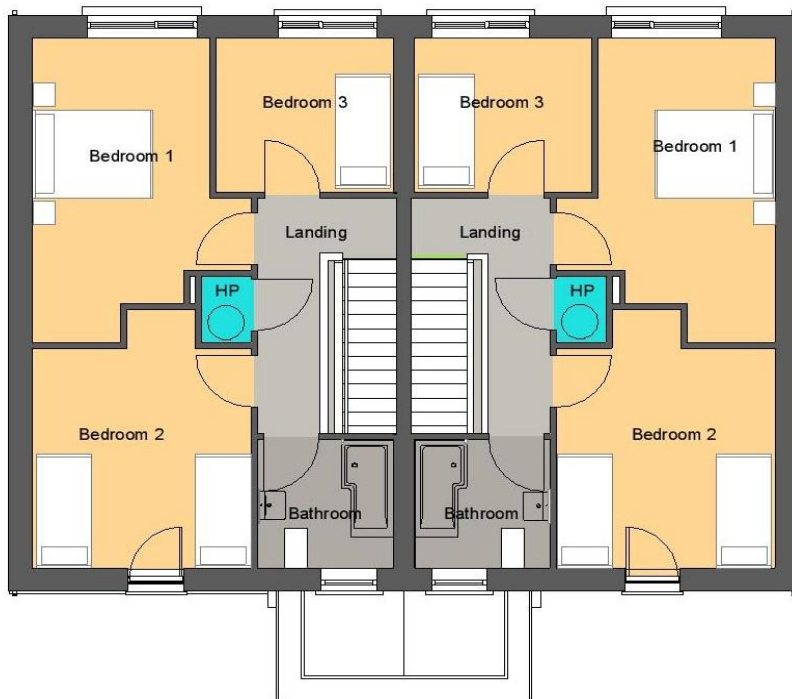
Location



3D View



GROUND FLOOR PLAN



FIRST FLOOR PLAN



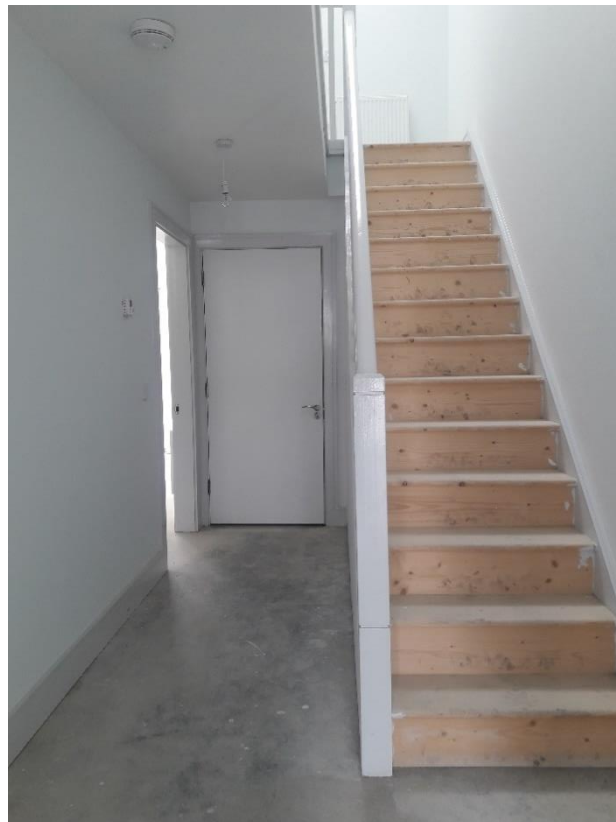
Kitchen



Utility



Entrance Lobby



Entrance Hall



Family Bathroom



Bedroom 1



Bedroom 2



Bedroom 3