

Bennettsbridge Local Area Plan

SOME KEY QUESTIONS



Preparation of a Local Area Plan for Bennettsbridge

Public Consultation

KSA town planning consultants have been appointed by Kilkenny County Council to prepare a Local Area Plan for the village of Bennettsbridge. As part of the preparation process we are now looking for your input prior to the preparation of the plan.

What is a Local Area Plan?

The Local Area Plan is a legal document and is a public statement of planning policies.

It will be a written statement and a plan indicating the objectives for the proper planning and sustainable development of the area and will include details on community facilities, amenities and standards for the design of developments and structures.

Your Opinion is important

Before the Local Area Plan is prepared we would like to invite your comments on any issues that you feel are relevant in the future planning and development of the area. Some of the key issues which we would like your views on include

- Housing and Population,
- Community Facilities,
- Recreation, Retail and Leisure Facilities,
- Transport,
- Heritage and Conservation,
- Infrastructure, and
- Landscape and Environment

Have Your Say

Written submissions:

You are hereby invited to make written submissions or observations in relation to the preparation of the Local Area Plan. All submissions should be made to the following address:

**Director of Services
Planning Department
Kilkenny County Council
John's Street
Kilkenny**

All submissions need to be received before **5pm on 20th of June 2008**.

As well as making submissions or observations in writing, you can e-mail submissions and representations to bennettsbridgelap@kilkennycoco.ie.

Any submissions or observations so made before 5pm on 20th June 2008 will be taken into consideration by the Council prior to the preparation of the Draft Local Area Plan.

Evening Workshop:

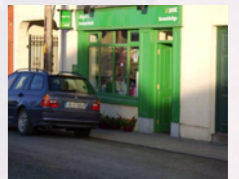
You are further invited to attend a public consultation workshop in Bennettsbridge Community Centre on **Wednesday 28th May 2008 at 7.00 p.m.**

Next Steps

Before the final Local Area Plan is adopted by the Council, a Draft of the Plan is prepared and put on public display. The views and opinions of the local community and members of the public will then be invited on the Draft Local Area Plan. A second evening workshop will be held and written submissions invited to give you a second opportunity to make your views heard and to comment on the specifics of the Draft Plan.

Recreation and Retail facilities

What additional recreation and retail services/facilities are required?



Community Facilities

What community facilities are needed, now and in the future?



Housing and Population

What is the appropriate size for Bennettsbridge?
How big should it grow?



Heritage and Conservation

What features should be protected and conserved?



Infrastructure Services

What additional infrastructure is required?

Transport

What improvements are needed?



CHURCH

SCHOOL

POST OFFICE

NICHOLAS MOSSE

BRIDGE