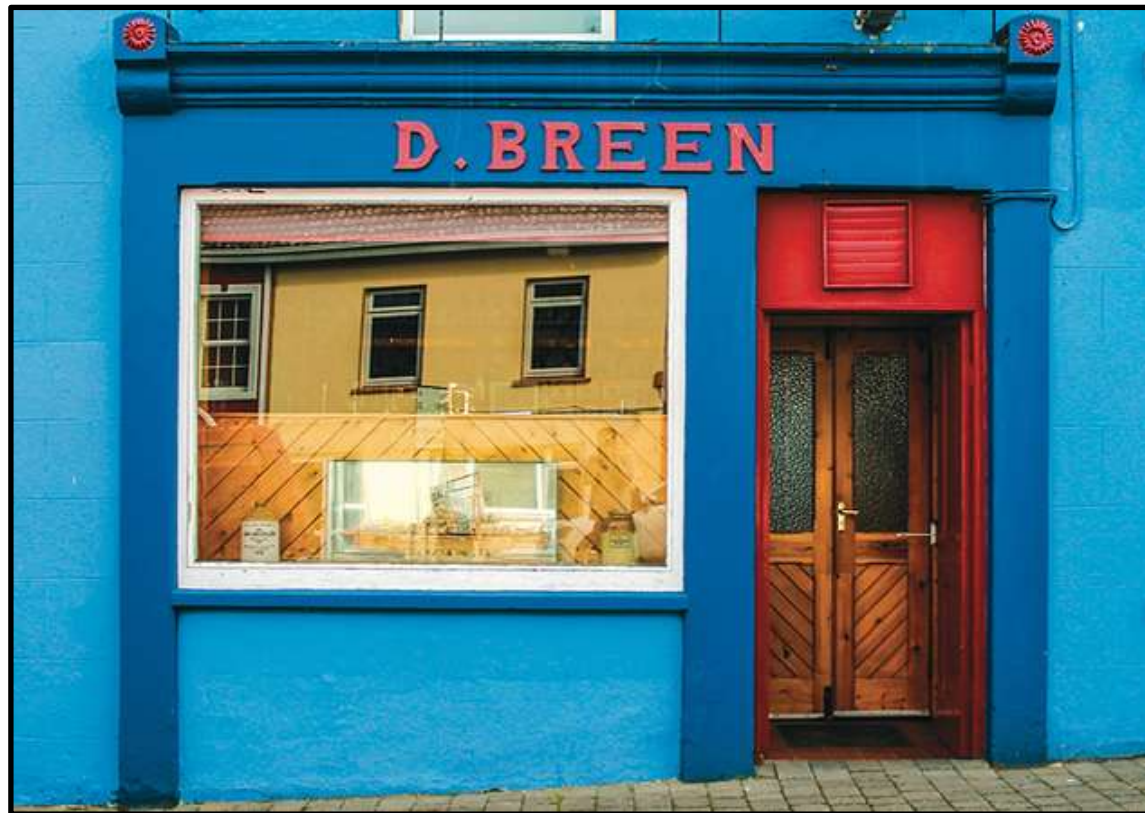


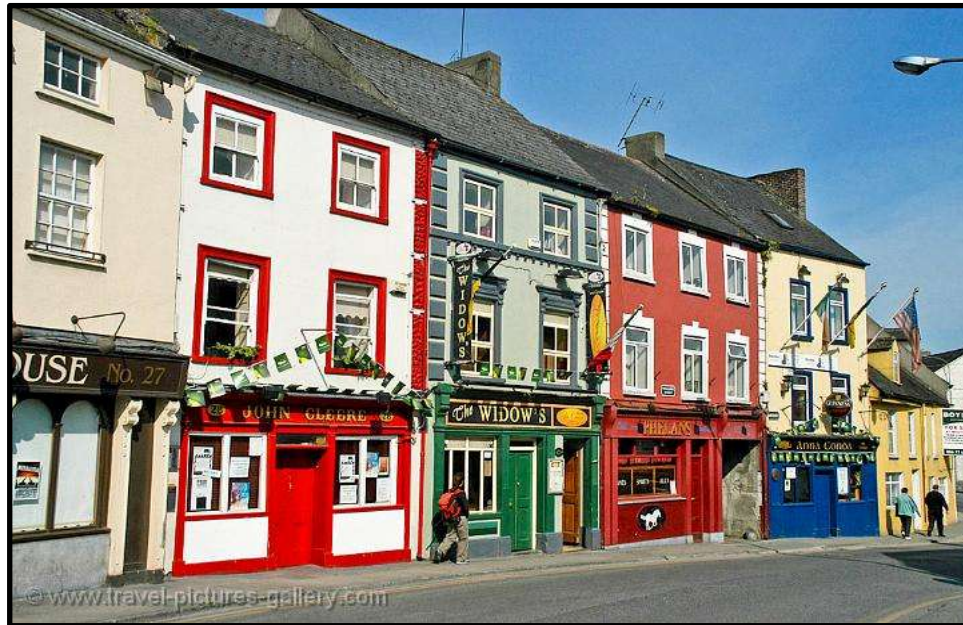
Shopfronts and Signage Kilkenny City



OUTLINE OF PRESENTATION

The Outline of this presentation will be as follows:

1. Aim of this presentation
2. Signage? – Why get ‘hung up’?
3. Current Planning Guidance
4. When is permission required?
5. Next Steps



1. AIM



2. SIGNAGE...

Why get hung up?



Good Design



Poor Quality



3. What guidance is available?



Development Plan Policy

Shopfronts



Replacement traditional shopfront



Contemporary replacement shopfront



Fascia Signage



Handpainted timber

Natural materials – wood, metal etc



Plastic derived fascias

Internally illuminated box fascias



Nameplate fascia linking two or more buildings is generally unacceptable

Security Shutters



Canopies and Awnings



Canvas canopy

Wrought iron arms

Timber blind box

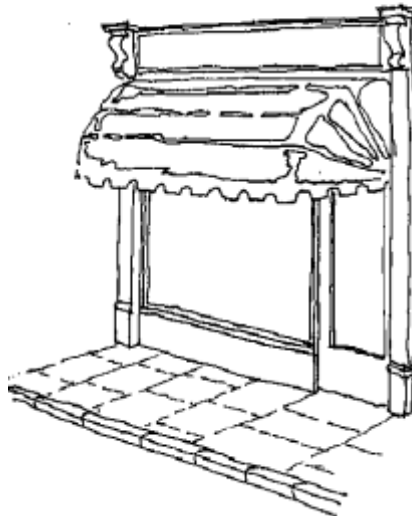


Plastic, uPVC

Curved or dutch canopies

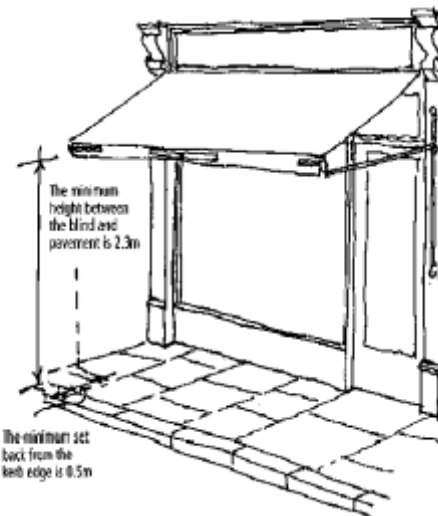
Shall not cover fascia or pilasters

Use of plastic or plastic coated blinds are not suitable as their design and reflective surface detract from the character of the building



Fabric roller blinds are traditional and more suitable in most cases

Blind boxes should be located within recessed boxes below the fascia



Lighting



Concealed strip/floodlighting/spotlights
Internal lighting of shop window



Internally illuminated signs
Lighting entire building
Coloured lighting of facade



Signage and Advertising



- Natural high quality materials
- Bespoke design for building
- Sympathetic in design and colour
- Traditional painted sign
- Wrought iron hanging sign



- Plastic/vinyl/banner signs
- Man-made materials
- Neon, perspex flashing,
- Reflectorised or glitter-type signs



Signage and Advertising cont..



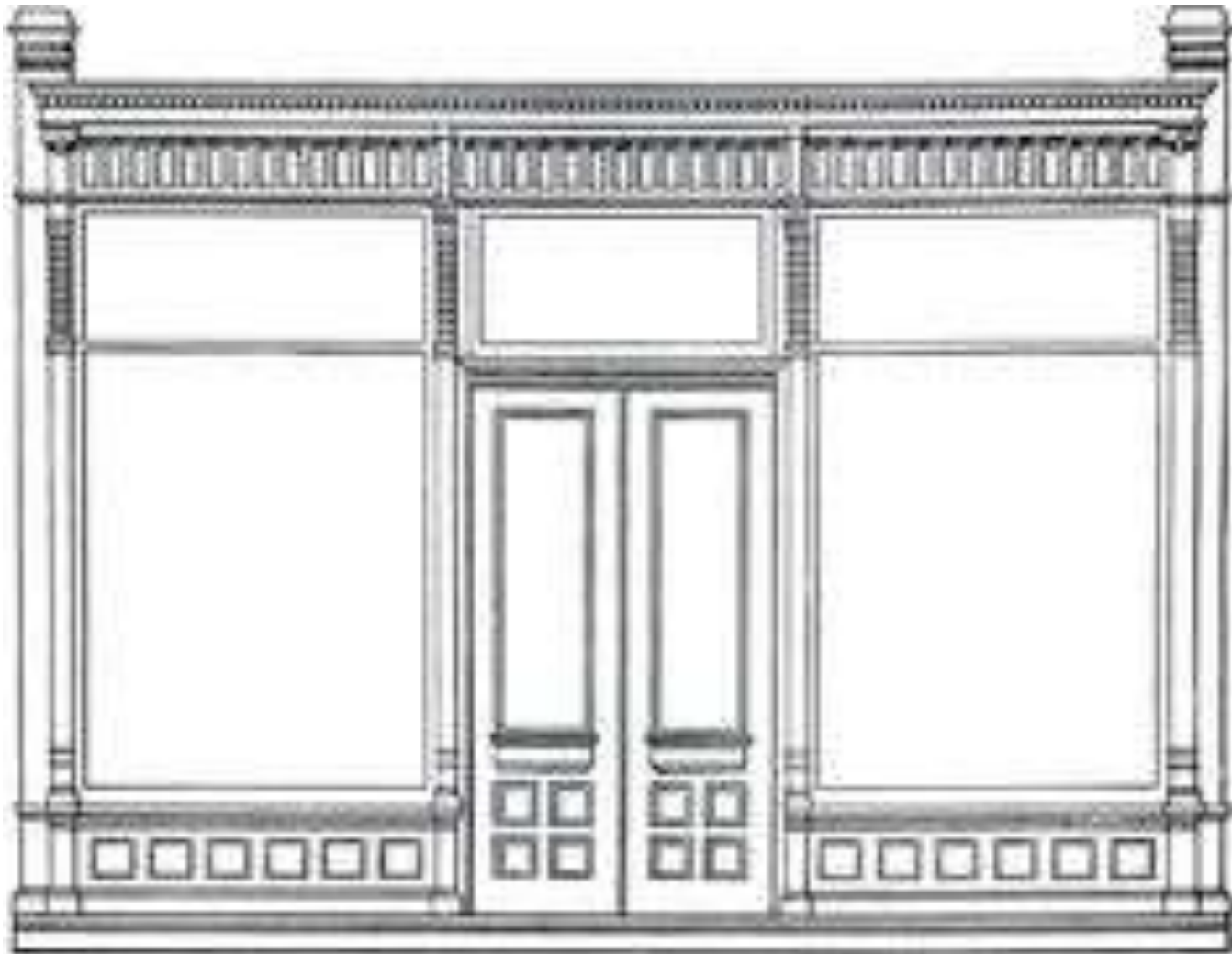
- Contact signage applied directly to a shop window
- Signs obscuring architectural features
- Signs above eaves, parapet or roofline level
- Signs which interfere with pedestrian or traffic safety



Street Furniture



4. Do I require planning permission?



How can I find out if I need planning permission?
Section 5 Declaration



Section 57 – Protected Structures



PLANNING MEETING



5. What next?



Pol O' Conghaile, the well known travel writer said of Kilkenny:

*“Lots of places are proud. Lots of places have tourist attractions. What makes Kilkenny stand out, however, is **its drive to get better...**”*



A special thanks to John Fitzgerald for his images of Kilkenny City.