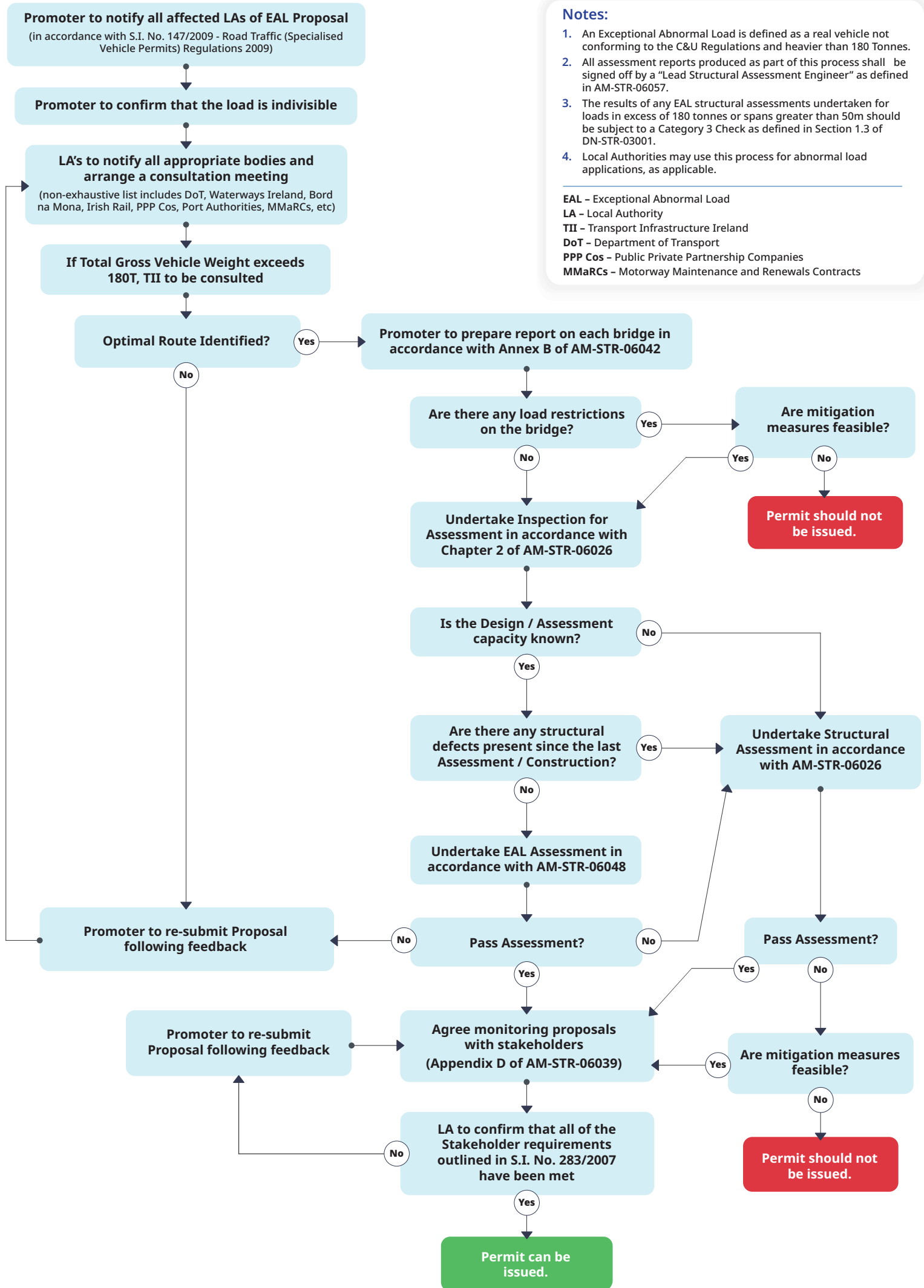


Exceptional Abnormal Load Management Flow Chart



Notes:

1. An Exceptional Abnormal Load is defined as a real vehicle not conforming to the C&U Regulations and heavier than 180 Tonnes.
2. All assessment reports produced as part of this process shall be signed off by a "Lead Structural Assessment Engineer" as defined in AM-STR-06057.
3. The results of any EAL structural assessments undertaken for loads in excess of 180 tonnes or spans greater than 50m should be subject to a Category 3 Check as defined in Section 1.3 of DN-STR-03001.
4. Local Authorities may use this process for abnormal load applications, as applicable.

EAL - Exceptional Abnormal Load
 LA - Local Authority
 TII - Transport Infrastructure Ireland
 DoT - Department of Transport
 PPP Cos - Public Private Partnership Companies
 MMRcS - Motorway Maintenance and Renewals Contracts