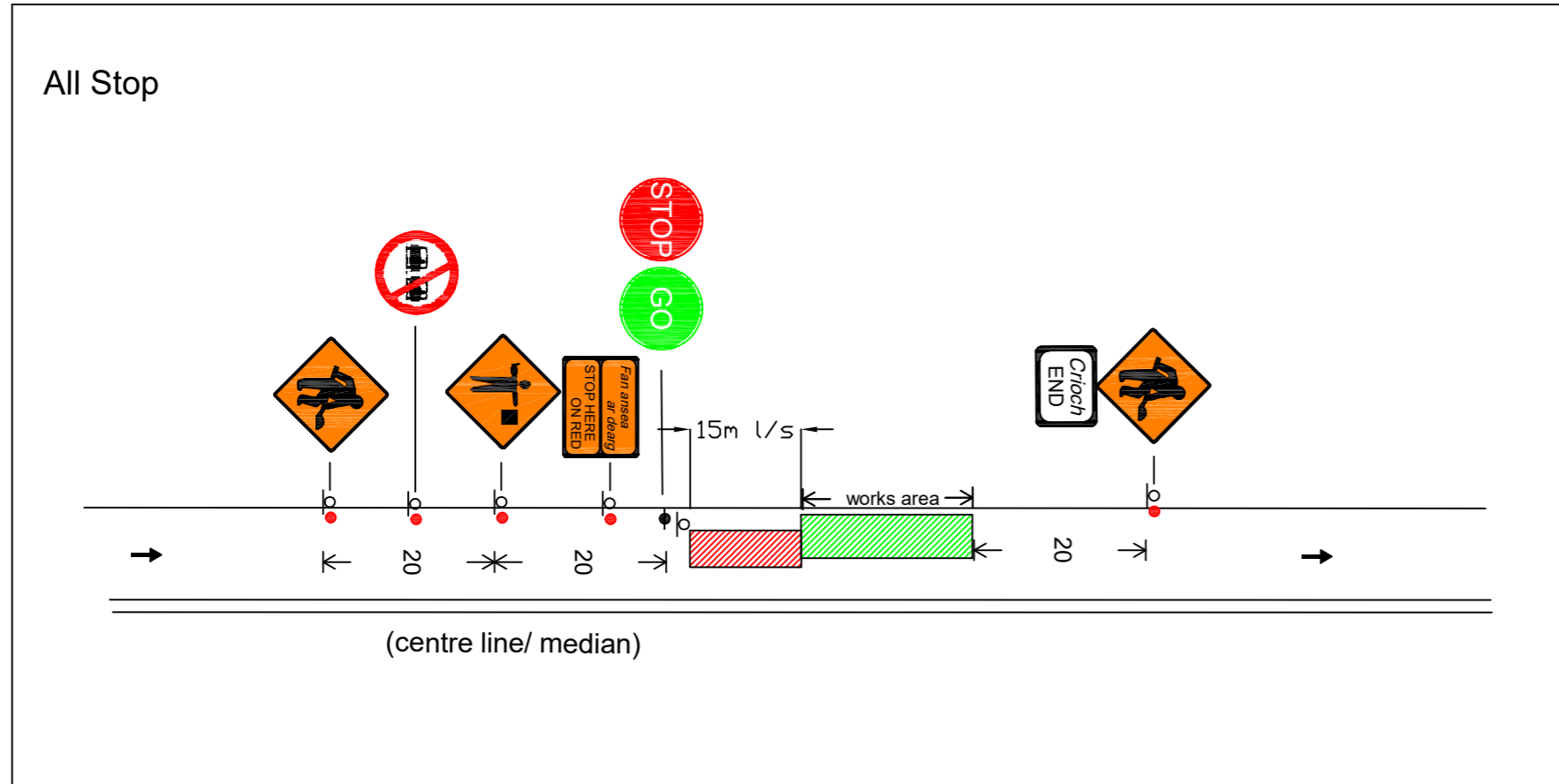


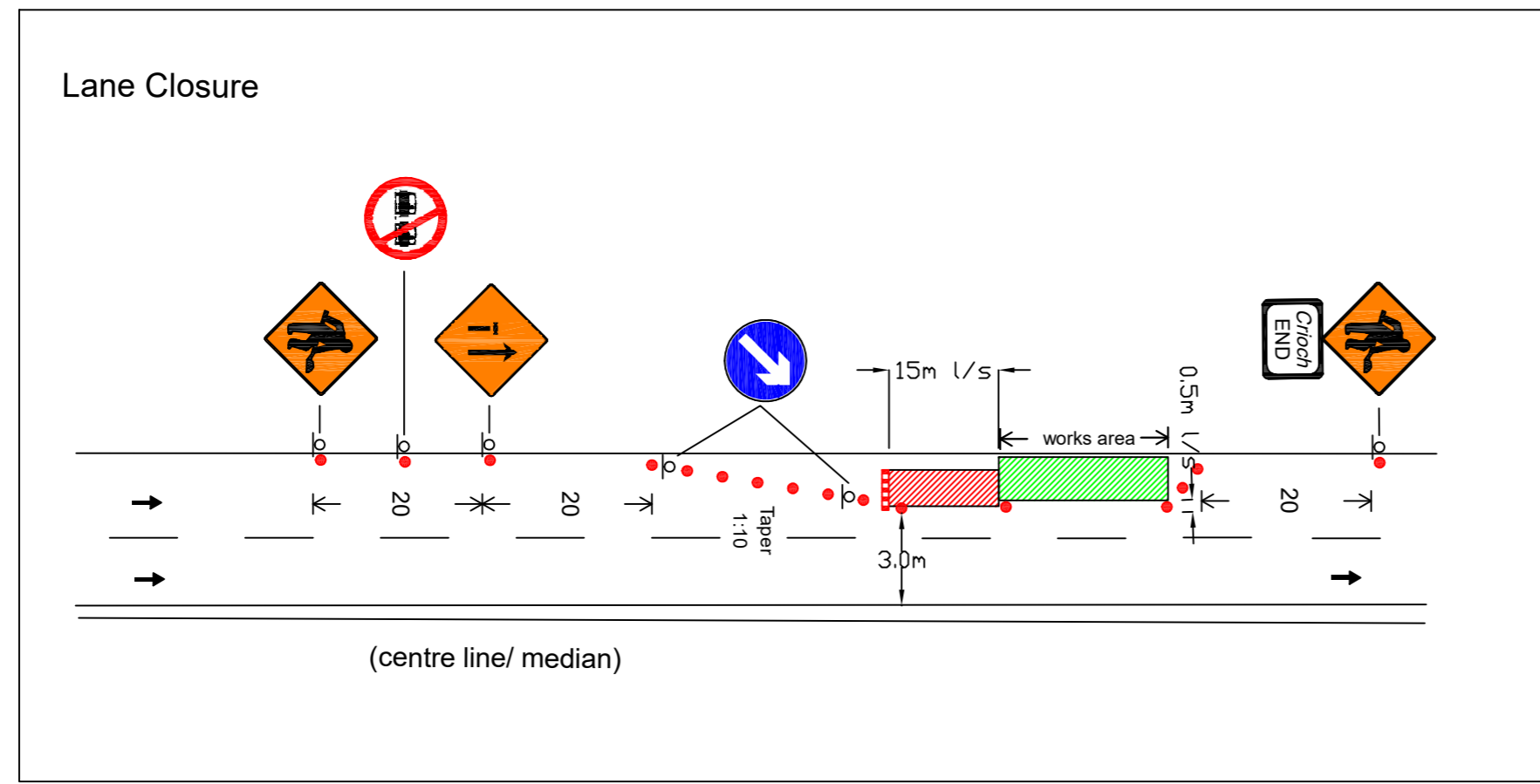
# TTMP - Lining Works - 'all stop' / 'lane closure' setup at Ossary bridge (level 1iv)



Minimum Design Parameter for Level 1 (iv) Roads  
(Single Carriageway of 60 Km/h & Multi-lane / Dual ≤ 60 Km/h)

Design Parameter	Type A 12 Hours	Type B < 12 hours	Type C < 15 mins
<b>Advanced Warning Signage</b>			
Sign Size (mm)	600	600	-
Sign Visibility (m)	60	60	60
Number of Signs	3	2	-
Cumulative Distance (m)	60	40	-
Distance Between Advance Warning Signs (m)	20	20	-
<b>Taper</b>			
Lane Taper Rate *	1 in 10	1 in 10	-
Lane hard Shoulder Rate *	-	-	-
Transition Length (m)	2 x taper length	2 x taper length	-
<b>Cones</b>			
Cone Height (mm)	750	750	-
Taper Spacing (m) **	3	3	-
Longitudinal Spacing (m) **	6	6	-
<b>Lamps (unlit areas only)</b>			
Taper Spacing (m)	6	6	-
Longitudinal Spacing (m)	12	12	-
<b>Safety Zones</b>			
Longitudinal (m)	15	15	-
Lateral (m)	0.5	0.5	-
<b>Lanes</b>			
Lane Width (m) ***	3 (2.5)	3 (2.5)	-
Two-way Roadway Width (m)	5	5	-

Notes:  
45° taper is required at shuttle traffic controlled layouts with cones at 1m centres  
\* Cone spacing is the maximum permitted. Where geometry or any other site-specific reason dictates, the spacing shall be reduced accordingly.  
\*\* The optimum lane width for all classes of vehicles is 3.3m. This may be reduced to a minimum of 3m. Below this, HGVs and buses must be marshalled past the works. The absolute minimum lane width, if only cars and light vehicles are present, is 2.5m. Refer to Paragraphs 8.4.3.1 to 8.4.3.3.



- Notes:**
- 1) All signs to be min. 600mm diameter
  - 2) 1.0m Traffic cones = ●
  - 3) Temporary speed restriction order in place
  - 4) Direction of traffic = →



Issue / Rev no:	Lining Works
Issue Date:	8/12/23
Drawn by:	M.Varian