

Comhairle Chontae Chill Chainnigh

Halla an Chontae, Sráid Eoin, Cill Chainnigh, R95 A39T.

Kilkenny County Council

County Hall, John Street, Kilkenny, R95 A39T.



Fóramh don Phobal - Caomhnú don Oidhreacht

Serving People - Preserving Heritage

Ref: TC 145

21st May, 2018.

TO: An Cathaoirleach
& Each Member of Kilkenny County Council

RE: Taking in Charge of Estates
Section 11 of the Roads Act, 1993
Section 180 of the Planning & Development Act, 2000
As amended by Section 59 of the Planning & Development Act 2010

ESTATE: 30 Units at Riverside Park, Urlingford, Co. Kilkenny.

In accordance with the decision of the Council on 12th March, 2018 a notice was published stating that Kilkenny County Council proposed to declare the road in the schedule hereunder to be a public road in accordance with the provisions of Section 11 of the Roads Act, 1993 in order to facilitate the taking in charge of the estate in accordance with Section 180 of the Planning & Development Act, 2000 as amended by Section 59 of the Planning & Development Act, 2010.

Written representations or objections in relation to the taking in charge were invited from the public. No objections or representations were received and the estate was completed in a satisfactory manner. In addition, the road is considered to be of a public utility. There are little or no financial implications in taking this estate in charge.

I therefore recommend that Kilkenny County Council resolve to take the estate in charge and that the roads be declared public roads and entered into the roads schedule of Kilkenny County Council.

SIGNED:

Sean McKeown
Director of Services
Planning

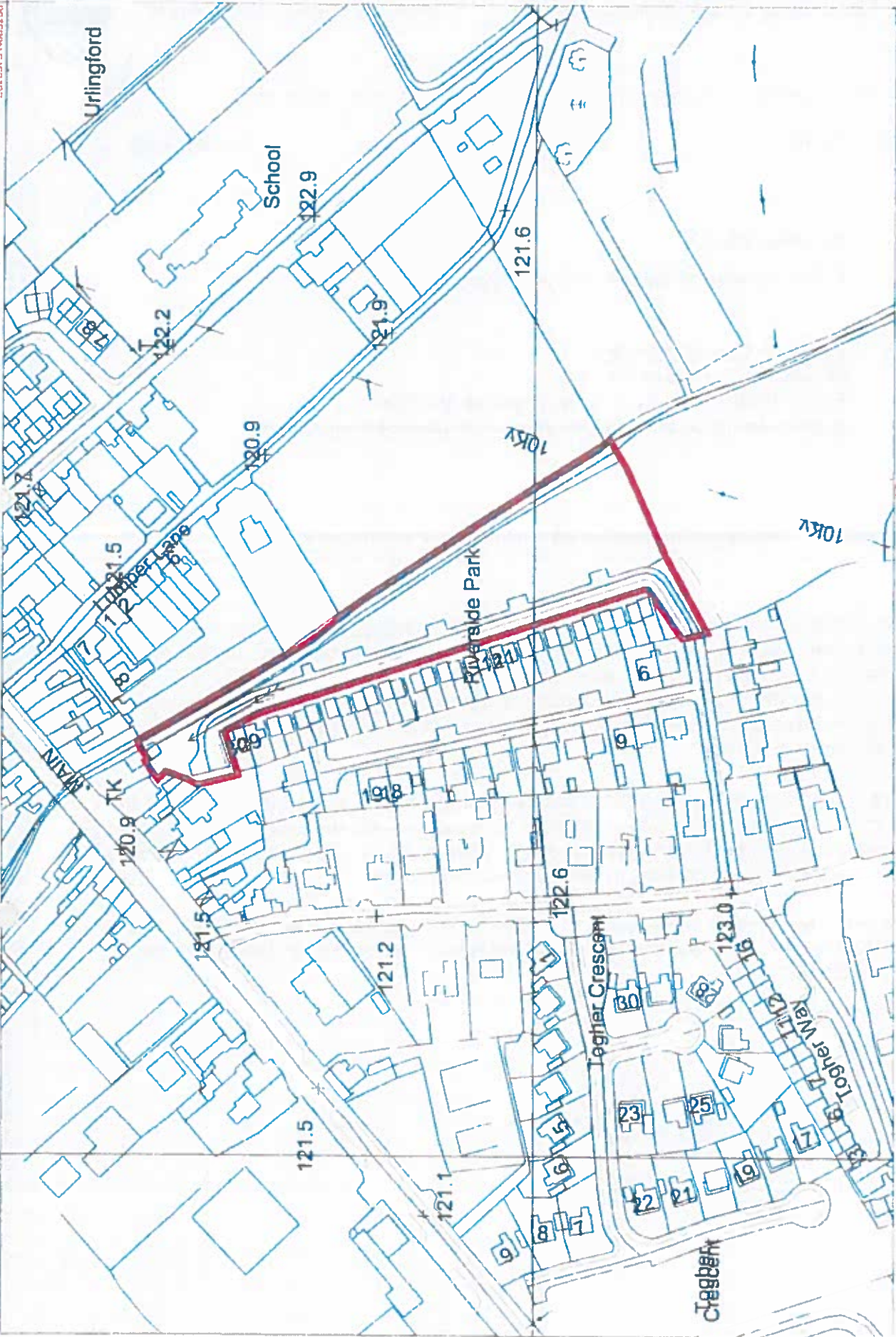


THIS IS A COMPUTER GENERATED MAP WITH ITM COORDINATES

MAP REF 4580-D 4581-C 4639-B 4640-A

E628575 N663258

BASED ON ORDNANCE SURVEY OF IRELAND MAP LICENCE NO KILKENNY CCMA 08/12



E627910 N662818

Uringford To

Avonbegh To

Lands at Uringford, Co. Kilkenny
 AREA OF SITE OUTLINED IN RED = 1.15 Ha
 FOLIO - KK6283F (Part of) KK33818F (Part of)

FOR INFORMATION ONLY
 PURPOSES ONLY

Scale	1:2500 @ A4
Date	05/02/2018
Drawn	BLS

Kilkenny County Council
 Castle Mall, 2nd Floor, Street A, Kilkenny
 Tel: 51 774242
 Fax: 51 774243
 Web: www.kilkenny.ie