

# **Kilkenny County Council**

## **Housing Capital**

### **Presentation to Members**

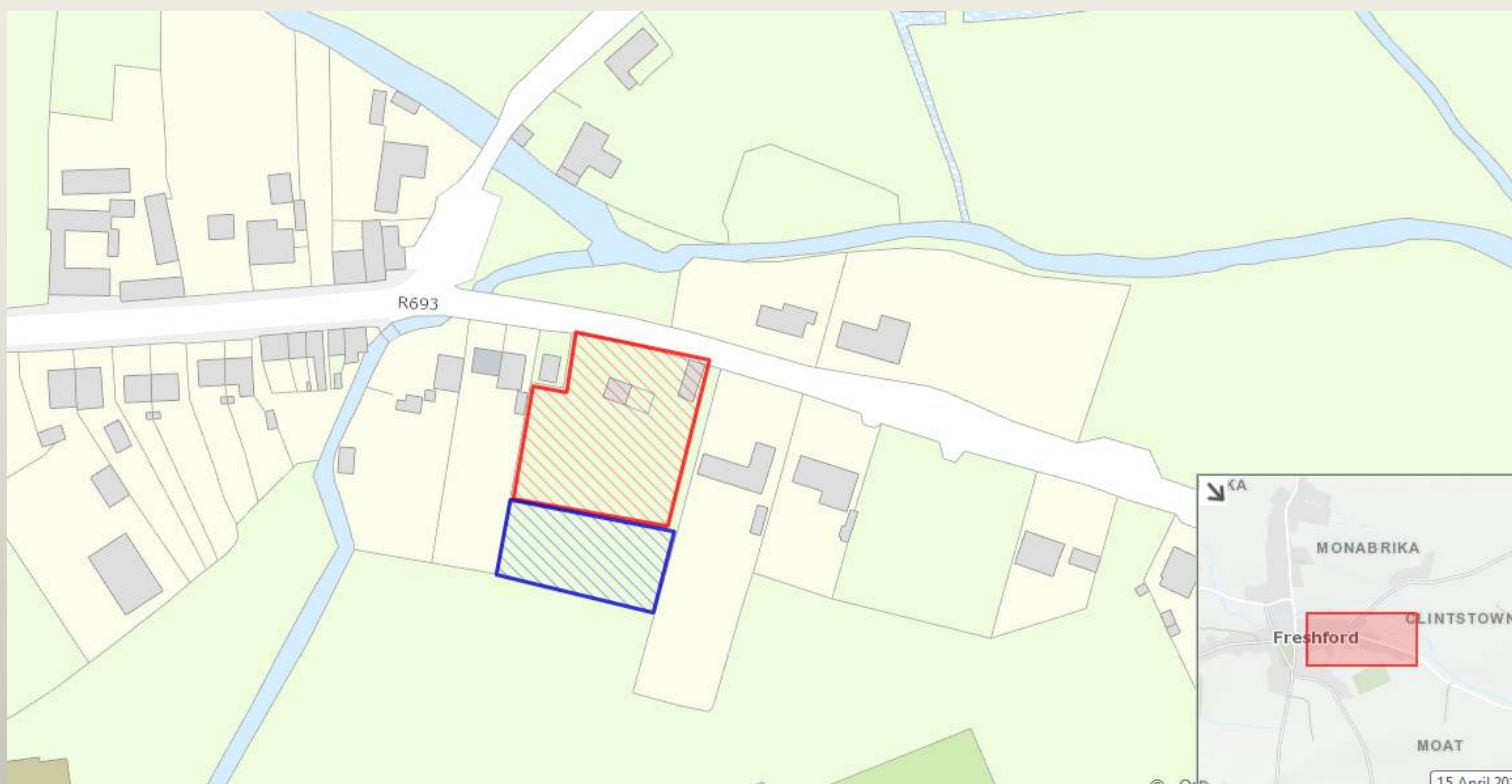
- (1) 5 Houses - Freshford**
- (2) 2 apartments – Graiguenamanagh**

**15<sup>th</sup> April 2019**



# **(1) Proposal for 5 no houses and playground at Moate Freshford**

**Land owned by Kilkenny Co Council & GAA**



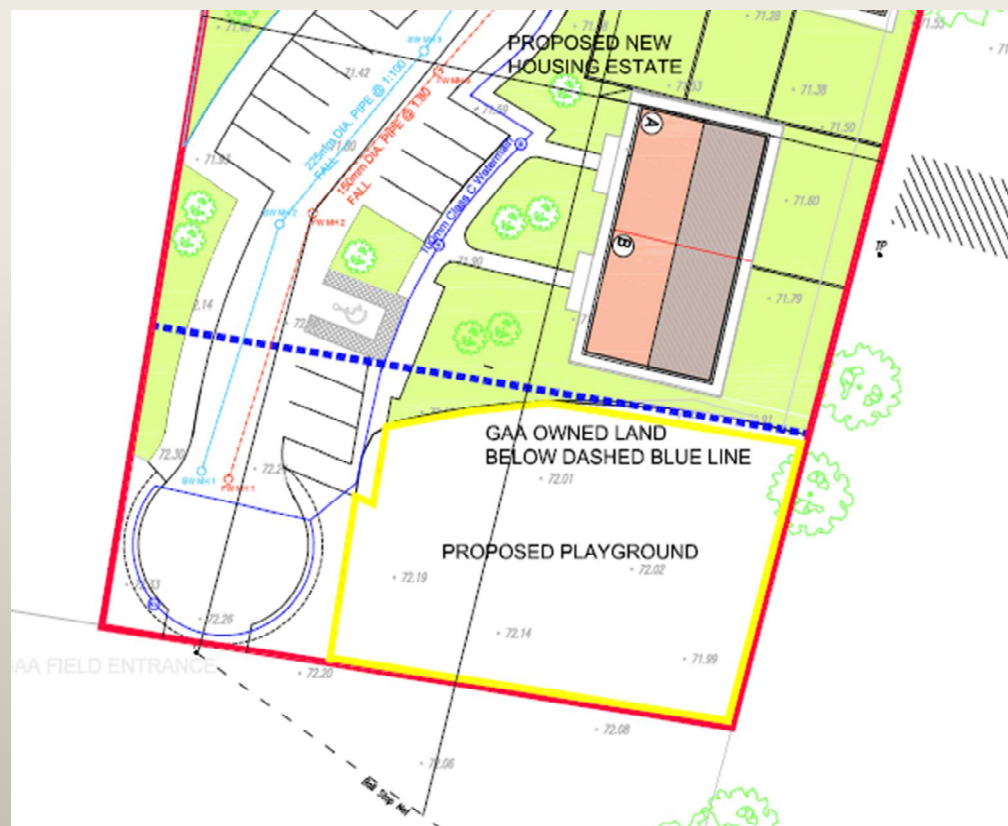
## (1) Proposal for 5 no houses and playground at Moate Freshford



## (1) Proposal for 5 no houses and playground at Moate Freshford

Freshford Housing List					
	1 bed	2 bed	3 bed	4 bed	Total
<b>First Preference</b>	10	9	9	1	<b>29</b>
<b>All Preference</b>	34	25	15	1	<b>75</b>



[illegible]



# (1) Proposal for 5 no houses and playground at Moate Freshford



Rebu  
Irela

## (2) Proposal for 2 no apartments on the site of former Graiguenamanagh Fire Station



## (2) Proposal for 2 no apartments on the site of former Graiguenamanagh Fire Station





## (2) Proposal for 2 no apartments on the site of former Graiguenamanagh Fire Station

### Graiguenamanagh Housing List

	1 bed	2 bed	3 bed	4 bed	Total
<b>First Preference</b>	18	16	8	1	<b>43</b>
<b>All Preference</b>	30	27	11	2	<b>70</b>



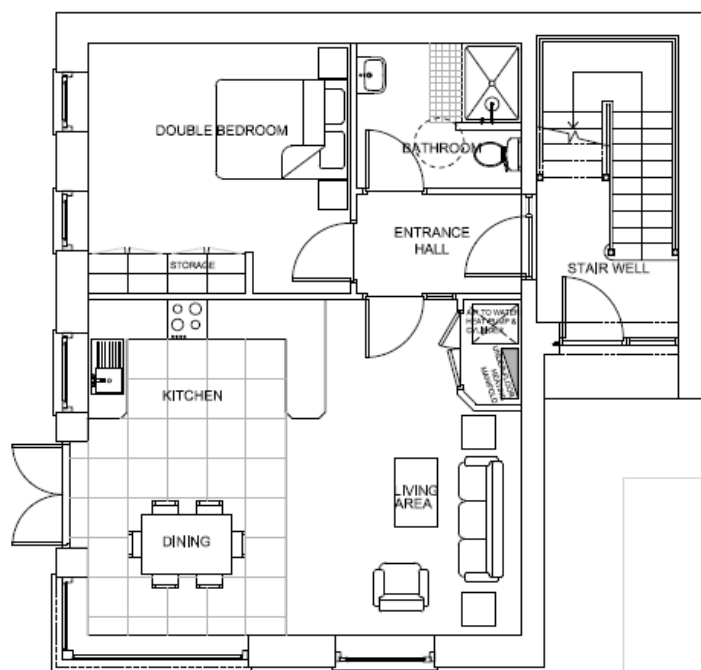
## (2) Proposal for 2 no apartments on the site of former Graiguenamanagh Fire Station



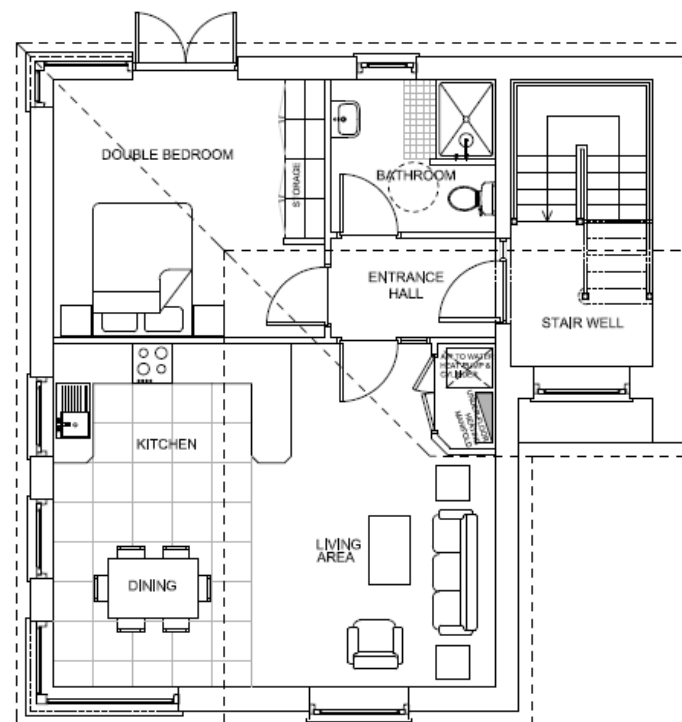
## (2) Proposal for 2 no apartments on the site of former Graiguenamanagh Fire Station



## (2) Proposal for 2 no apartments on the site of former Graiguenamanagh Fire Station



GROUND FLOOR UNIT  
SCALE 1:100  
APARTMENT AREA 58.8m<sup>2</sup> (633ft<sup>2</sup>)



FIRST FLOOR UNIT  
SCALE 1:100  
APARTMENT AREA 58.8m<sup>2</sup> (633ft<sup>2</sup>)





「thank you.」