

# National Broadband Plan Project Status

---

Kilkenny County Council

---

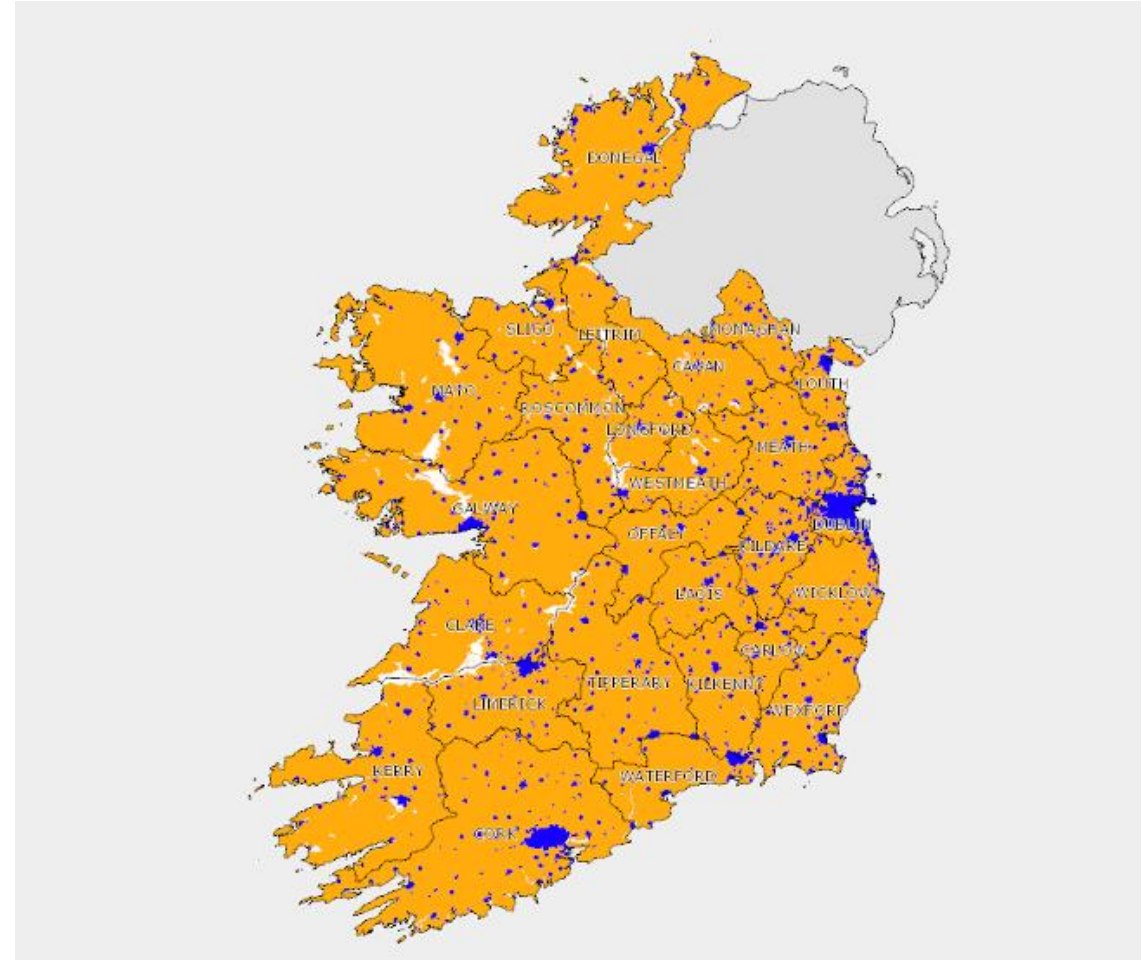
TJ Malone, Chief Executive, NBI Deployment

21<sup>st</sup> February 2022

# The National Broadband Plan

The National Broadband Plan (NBP) is the largest ever telecommunications project undertaken by the Irish State.

It aims to radically transform the country's broadband landscape through the delivery of quality, affordable high-speed broadband to all parts of Ireland where such services are not available commercially.



**AMBER areas** - the target areas for the State intervention of the National Broadband Plan

**BLUE areas** - where commercial operators are delivering or have indicated plans to deliver high speed broadband services.

# The National Broadband Plan

## Access Regardless of Geography

---

The NBP will ensure that all people and businesses have access to high-speed broadband, no matter where they live or work.

The Department of Communications identified all premises in the country that don't have access to high-speed broadband – this is called the Intervention Area.

## 554,000 + Premises

---

NBI have been contracted to connect the 554,000+ premises **ensuring no one is left behind.**

The network is being designed, built and operated by National Broadband Ireland, using a combination of State subsidy and commercial investment.

## 7 Year Build Programme

---

It's a 7-year build programme – currently scheduled to complete in 2026.

NBI are responsible for the management and maintenance of the NBI™ network for the next 25 years.

# National Overview

---

Premises Surveyed: 300,908

Designs Complete: 254,000

Constructed/under construction: 154,088

Premises Available for Order/Pre-Order: 54,512

---

Premises Connected: 6,966

Connections Pending: 1,307

RSP Contracts signed: 50

Total EOI's: 62,906

---

Public BCP's Installed: 270

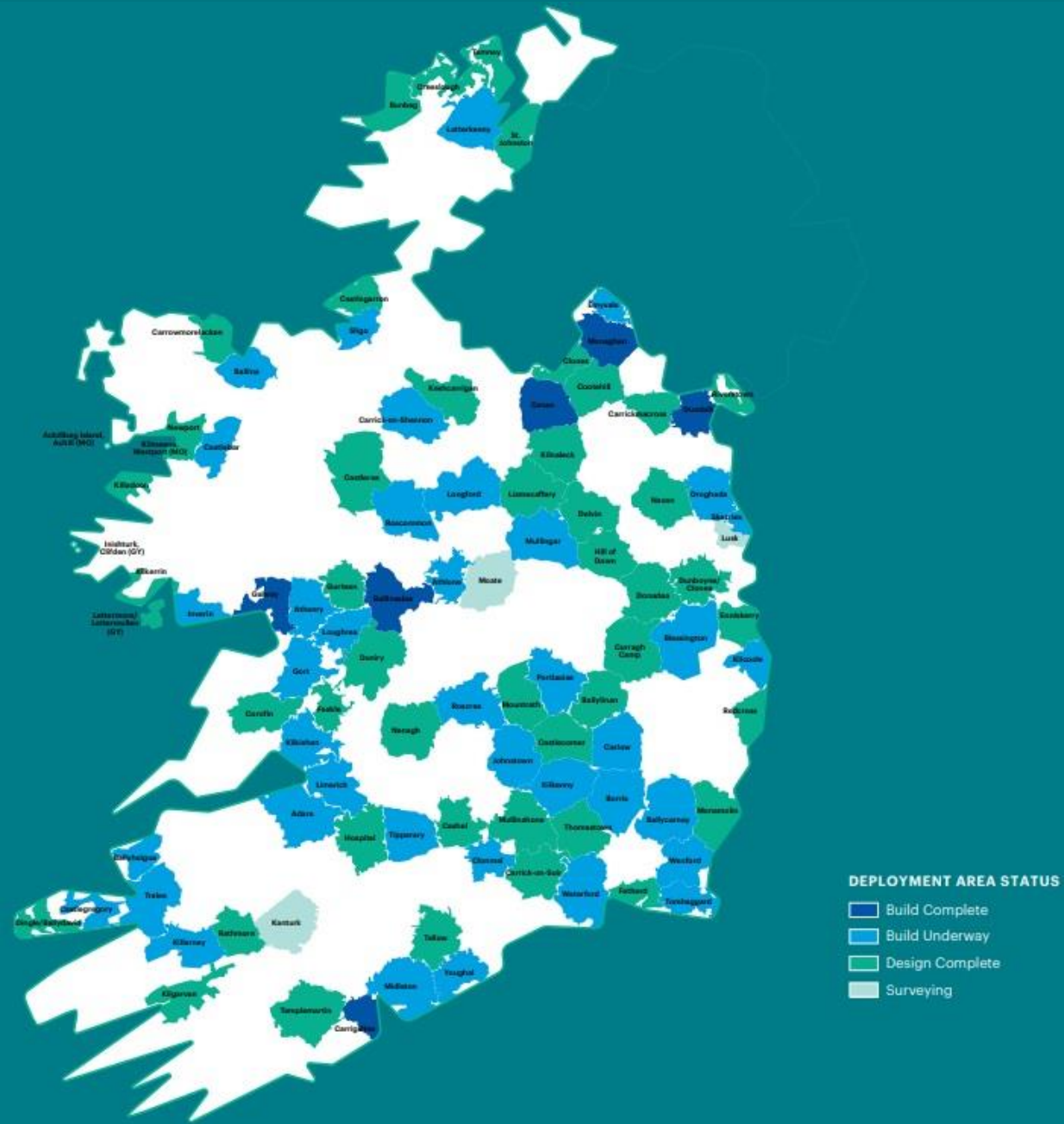
Schools BCP's Installed: 216

# The National Broadband Plan

## Build Underway in 26 Counties

## Premises Live in 18 Counties

Carlow	Kildare	Roscommon
Clare	Kilkenny	Sligo
Cavan	Laois	Tipperary
Cork	Limerick	Waterford
Galway	Louth	Wexford
Kerry	Monaghan	Wicklow





# Activity Overview

Different Deployment Areas are at different stages of the construction cycle.

- **Engineering Surveys** of townlands are required to examine the existing pole and duct network for inclusion in the design, if any remedial works required and to determine what level of new network infrastructure is required.
- NBI's **Detailed Design** process confirms infrastructure, power & footprint required, drawings, openair works, Local Authority requirements, and revised cost analysis.
- **Network Build.** After the designs have been approved, pre-works, then main works start on the ground: readying existing infrastructure (openair), upgrading & adding poles and ducts, laying fibre, preparing backhaul facilities, fulfilling Local Authority requirements, tree trimming etc.



## Infrastructure Upgrades

Investigate the risk of delay in consents from the various state agencies, and a process of engagements with

- Local Government Management Agency (**LGMA**)
- County and City Management Association (**CCMA**)
- Road Management Office (**RMO**)

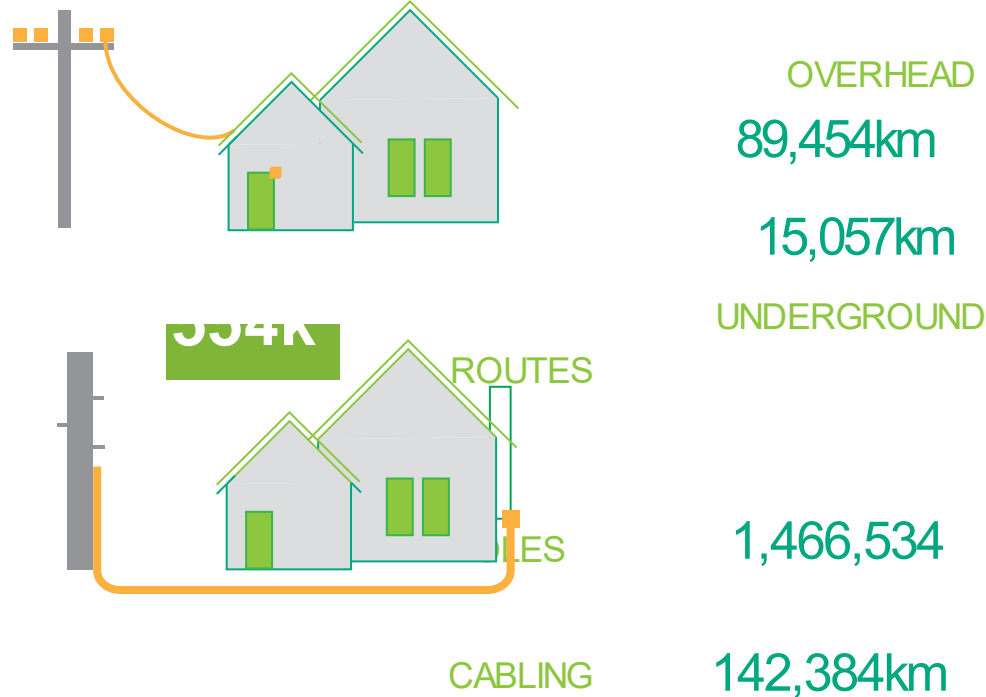
The objective of these engagements was to establish a national set of guidelines for the erection of new telegraph poles to support the timely connection of premises.

### Section 254

Specifically, Section 254 of Planning and Development Act is an important step for a successful rollout and NBI's ability to connect homes.

**DHLG Circular  
PL07/2021 18<sup>th</sup> August  
2021**

**Prioritisation of license applications** - In further recognition of the Governments priority commitment to ensure swift rollout of broadband throughout the county, planning authorities are requested to prioritize Section 254 license applications for overground cables, and to process these as speedily as possible.



**New guidelines were issued on 5th May 2021 to all Local Authorities to assist planners and engineers.**



# Working Together in Support of the NBP

- Kilkenny County Council will see significant activity from NBI and our subcontractors in terms of **licence applications**.
- Consistency of approach from **national guidelines** critical to efficient processing of licences and timely connection of premises so citizens have access to the high-speed broadband.
- **Broadband Officers** in each Local Authority play a key role in support of the project delivery.

Elected Representatives have important role in ensuring Local Authorities are working with all relevant stakeholders in ensuring smooth roll-out of National Broadband Plan.

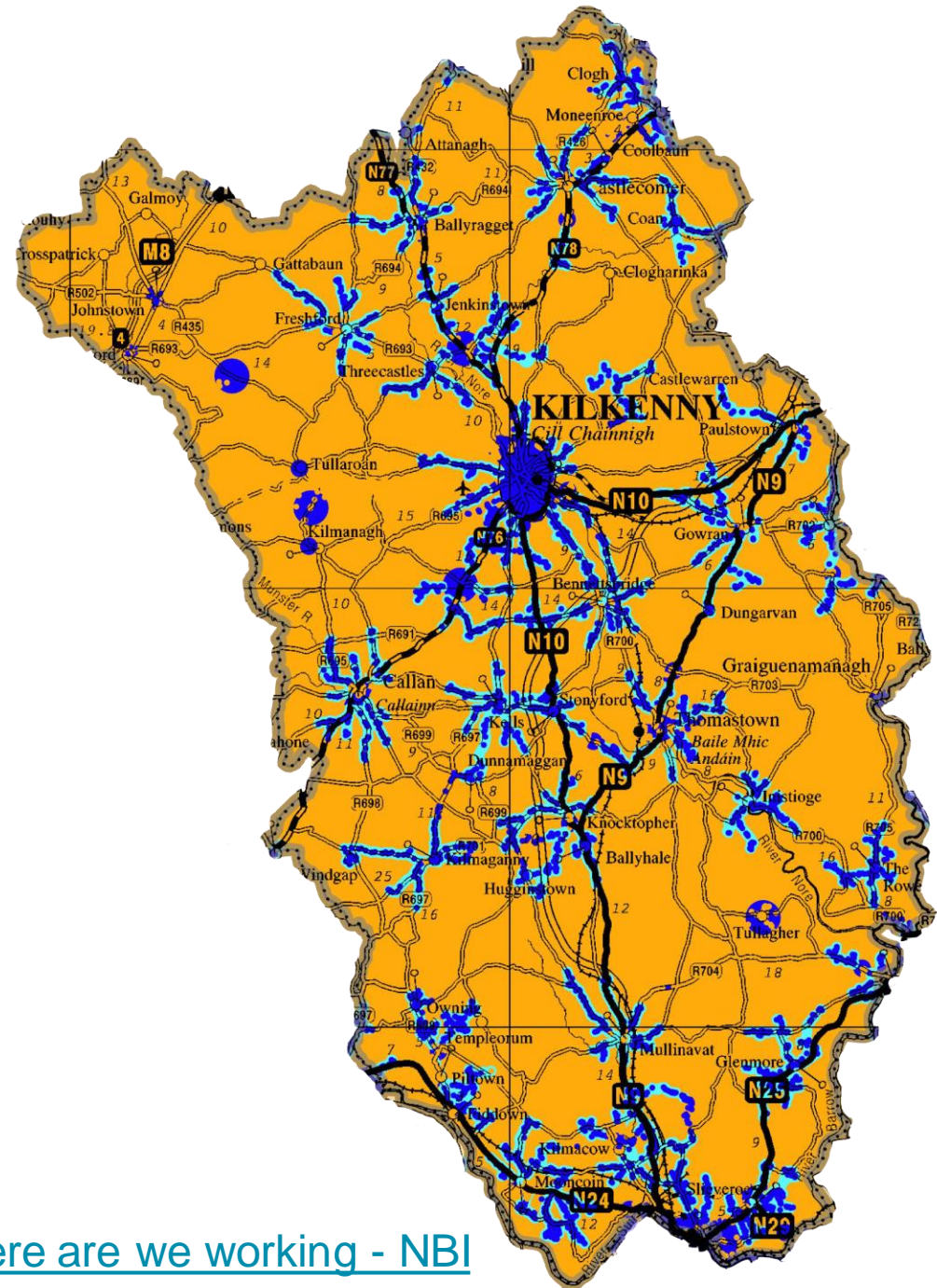




# Co. Kilkenny - Fibre to the Home

# Co. Kilkenny Overview

- There are **~18,563** premises in Co. Kilkenny without access to high-speed broadband.
- This represents **38%** of the total premises in the county.
- Government will invest **~€72m** in delivering the NBP in Co. Kilkenny.
- **7** Broadband Connection Points (BCPs) and **21** schools are also in scope.



# Kilkenny

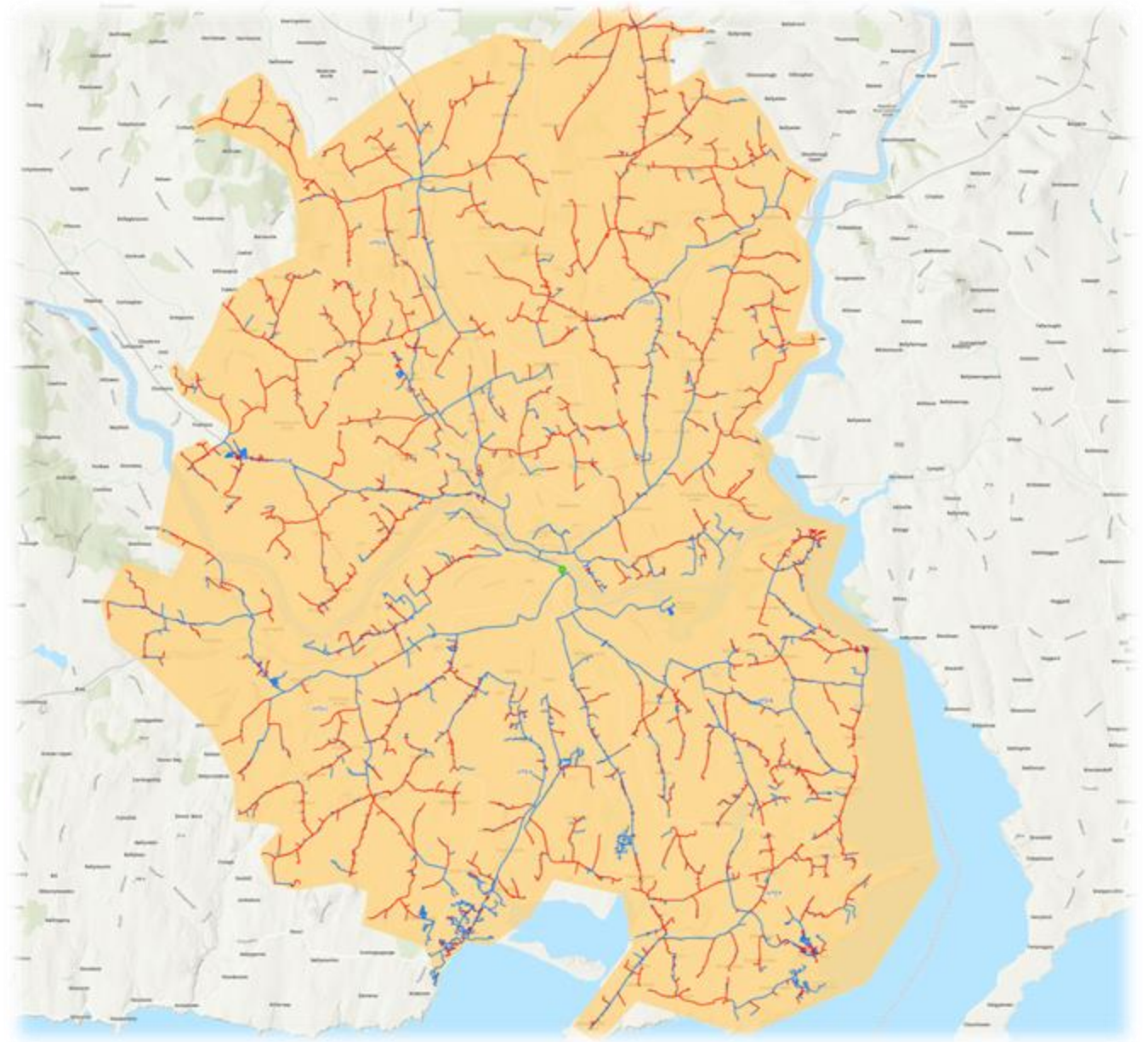
- Total number of premises to be served in County Kilkenny: 18,563
- 100% of Kilkenny premises will be surveyed by end 2022
- 59% of Kilkenny premises will have build commenced by end 2022; 97% by end 2023
- 97% of Kilkenny premises will have build complete by end 2024



Kilkenny Surveys Completed		Build Commencing Profile		Build Complete Profile	
2020	50%	2021	50%	2022	43%
2021	97%	2022	59%	2023	52%
2022	100%	2023	97%	2024	97%
		2024	100%	2025	100%



## Waterford Deployment Area - includes premises in County Kilkenny

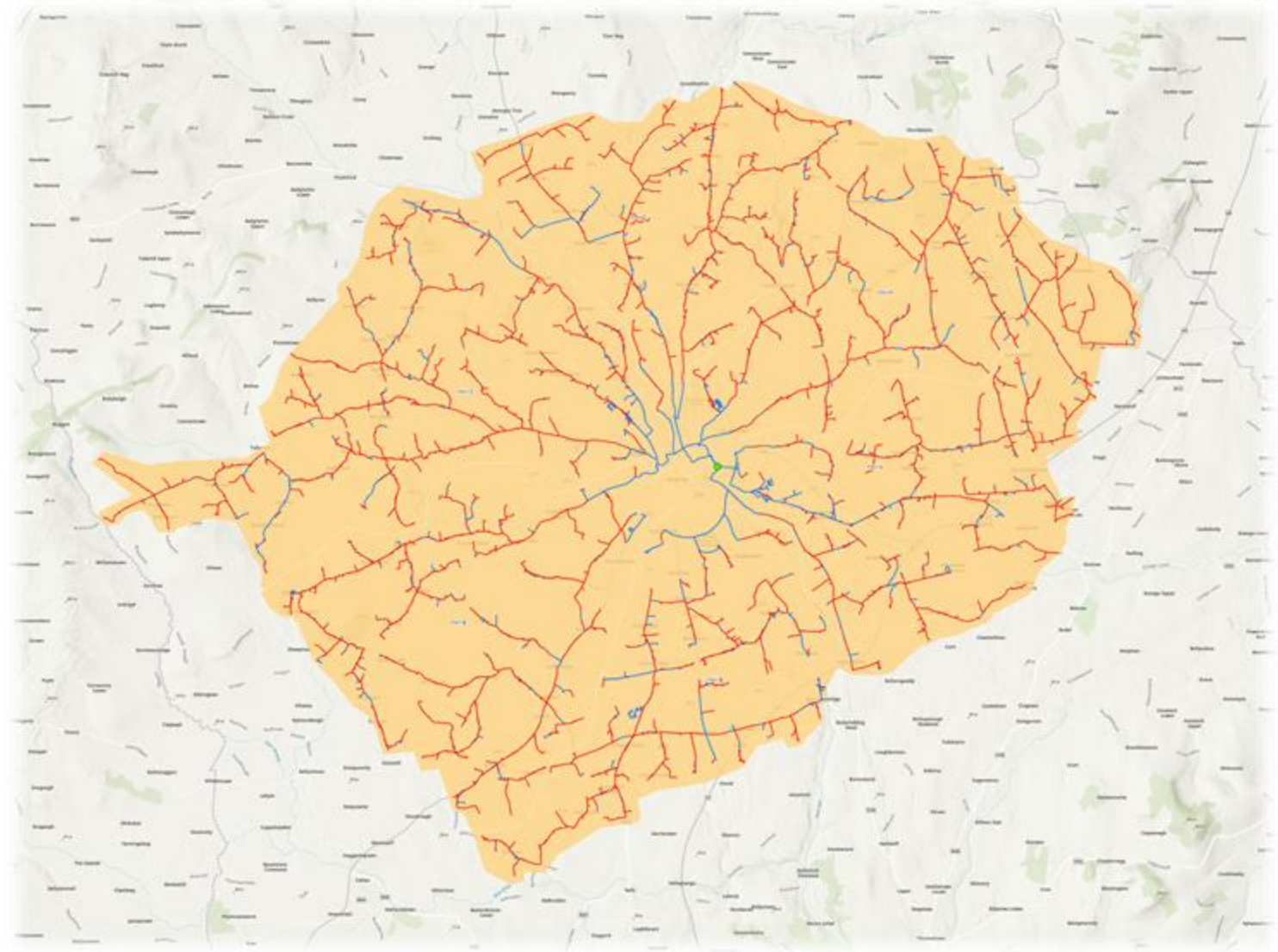
- Waterford Deployment Area serves **6,285 premises**, including **2,532 premises (40%)** in County Kilkenny
- Status: **Network Build in Progress**
- Timeline for connections: **Aug 22 - Oct 22**





 Red lines, overhead infrastructure  
 Blue line, underground infrastructure

# Kilkenny Deployment Area

- Kilkenny Deployment Area serves **3,395 premises** in County Kilkenny
- Status: **Network Build in Progress**
- Timeline for connections: **Oct 22 - Jan 23**

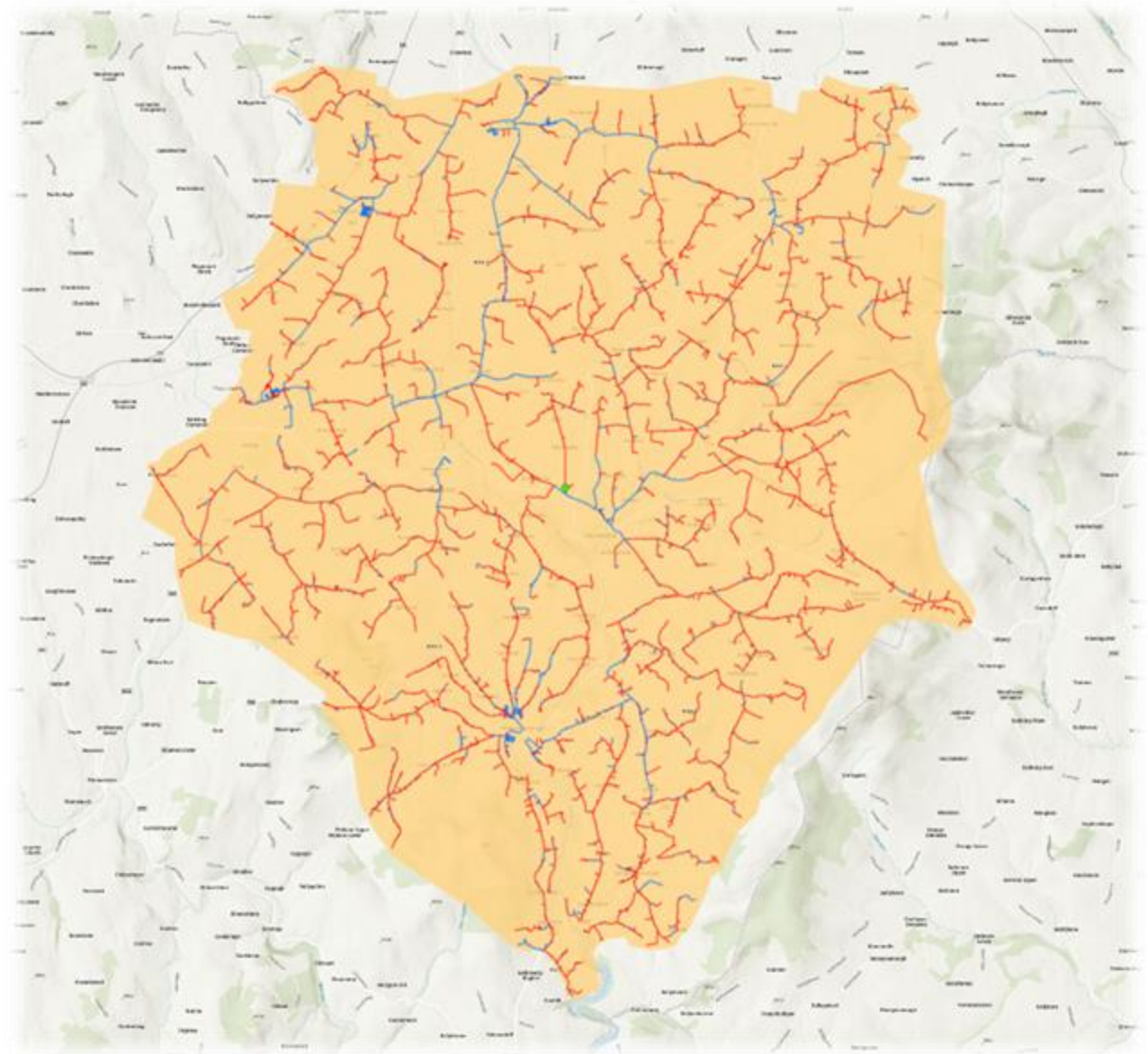




 Red lines, overhead infrastructure  
 Blue line, underground infrastructure



## Borris Deployment Area

- Borris Deployment Area serves **1,952 premises** in County Kilkenny
- Status: **Network Build in Progress**
- Timeline for connections: **Nov 22 - Jan 23**

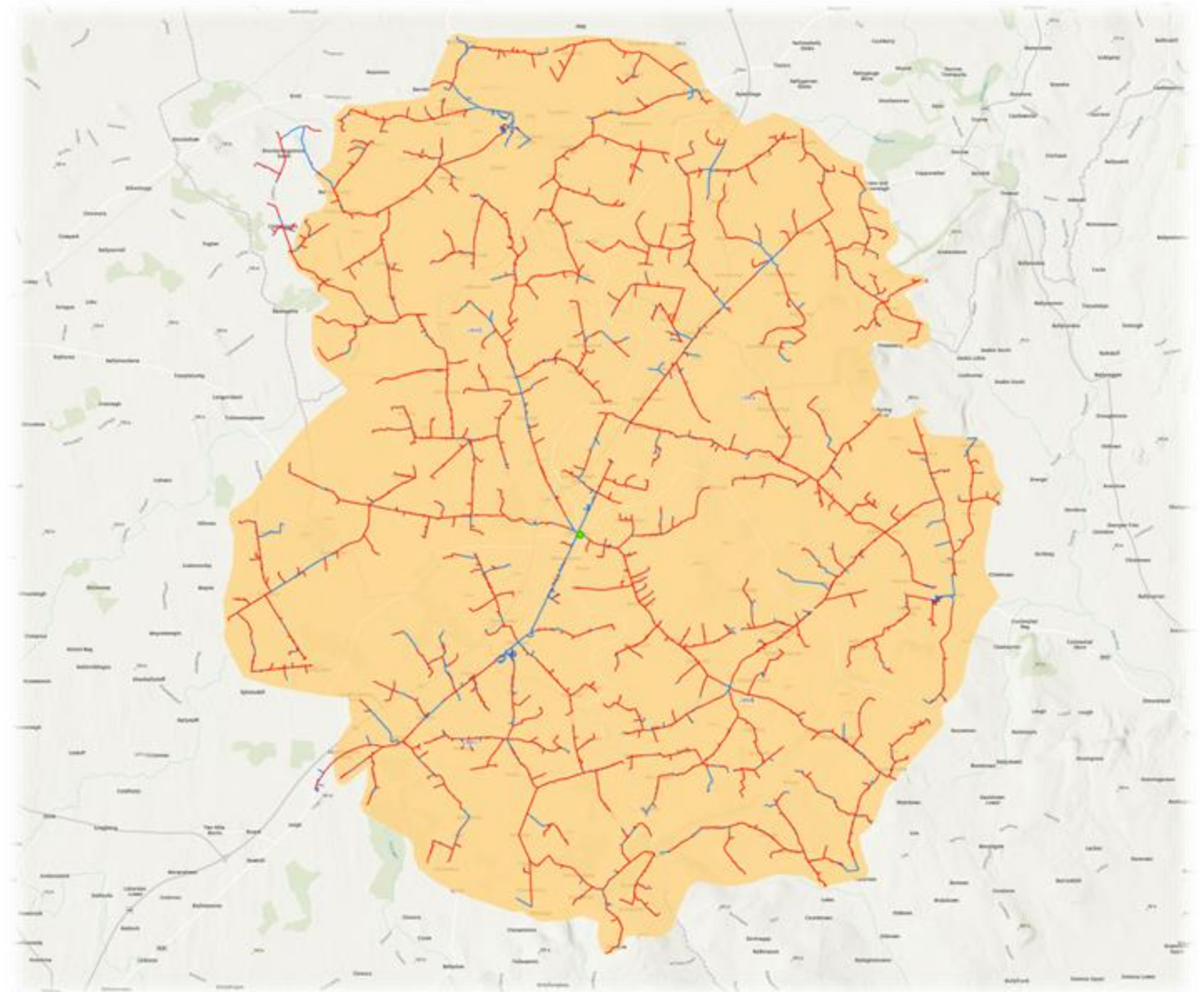




 Red lines, overhead infrastructure  
 Blue line, underground infrastructure



## Johnstown Deployment Area

- Johnstown Deployment Area serves **1,651 premises** in County Kilkenny
- Status: **Network Build in Progress**
- Timeline for connections: **Jan 23 - Mar 23**



 Red lines, overhead infrastructure  
 Blue line, underground infrastructure

# County Kilkenny Deployment Areas

Deployment Area	# Premises in County Kilkenny	Status	Anticipated Date For Connection
Carlow*	50	Available To Order/Pre-Order	Available now
Waterford*	2532	Network Build in Progress	Aug 22 – Oct 22
Kilkenny	3395	Network Build in Progress	Oct 22 – Jan 23
Borris*	1952	Network Build in Progress	Nov 22 – Jan 23
Johnstown	1651	Network Build in Progress	Jan 23 – Mar 23
Castlecomer	2565	Survey Complete	Jan 23 – Dec 24
Carrick-On-Suir*	1537	Survey Complete	Jan 23 – Dec 24
Mullinahone*	1027	Survey Complete	Jan 23 – Dec 24
Thomastown	2679	Survey Complete	Jan 23 – Dec 24
Ballynabola*	541	Survey Pending	Jan 25 – Dec 26
Additional Premises	613	Survey Pending	Jan 25 – Dec 26

**52% (9,580) of total premises in Kilkenny are currently under construction**

**These premises will be delivered between August 2022 and March 2023**

\*Deployment Areas in other counties serve premises in County Kilkenny

# Co. Kilkenny - Broadband Connection Points & Schools



# BCPs in County Kilkenny

7 **BCP** locations in County Kilkenny – all of which are now live.

The full list of BCPs is available on [www.nbi.ie](http://www.nbi.ie)

BCPs for Connection	Phase
Galmoy Community Centre	Live
Crosspatrick Community Hall	Live
Graine Community Hall	Live
Ballyouskill Parish Hall	Live
Muckalee Handball Club	Live
Connolly's Pub	Live
Tullaghought Parish Hall	Live

BCPs are public locations which have been selected by the Local Authority / BBO's to receive high-speed connectivity in the early stages of the rollout.



# BCPs & Primary Schools in County Kilkenny

**21 schools** are in scope to connect to high-speed broadband:

The full list of BCPs is available on [www.nbi.ie](http://www.nbi.ie)

Schools for Connection	Phase
SAINT AIDAN'S NATIONAL SCHOOL	Connected
LISTERLIN NATIONAL SCHOOL	Connected
GREENKILL NATIONAL SCHOOL	Connected
SAINT MICHAEL'S PRIMARY SCHOOL	Connected
SCOIL MHICHIL NAOFA	Connected
URLINGFORD NS	In Progress (Feb 22)
S N BAILE AN FHASAIGH	In Progress (Nov 22)
LISNAFUNCHINNS	Planned
S N SHEAN BHOTH	Planned
S N MHUIRE LOURDES BUAC	Planned
S N NAOMH COLMAIN	Planned
S N MUIRE	Planned


Schools for Connection	Phase
SCOIL BHRIDE B7C	Planned
S N BAILE AN PHIULL	Planned
BUNSCOIL MCAULEY RICE	Planned
S N MOIN RUADH MIXED	Planned
S N AN MOININ RUA	Planned
S N BHREANDAIN NAOFA	Planned
S N COLMAIN	Planned
S N CAISLEAN AN CUMAIR	Planned
HOLYCROSS N.S.	Planned


# Functionality To Support Constituents

# Eircode Search


Members of the public can easily determine if they are in the intervention area or not – via our Eircode search function.

www.nbi.ie



CRADDOCKSTOWN, NAAS,  
Co. KILDARE, 

Your nearest Broadband  
Connection Point is  
16.66 km >



### Network Build in Progress


It's on the way! It is estimated that high speed Fibre Broadband will be available in your area within the date range above. To be the first to know when your area will be ready to connect, sign up.\*

Anticipated date for connection: **April 2022 - June 2022**


Get Local Updates


MapSatellite


R410R410River Monell




Network Build in Progress




CRADDOCKSTOWN,  




Inside Intervention Area



Outside Intervention Area



Broadband Connection Points

Google

Keyboard shortcuts | Map data ©2021 Imagery ©2021, Maxar Technologies | Terms of Use | Report a map error

\*All dates provided are estimated based on our current view, but are likely to change in the future.

For example, your premises may be re-assigned to another Deployment Area with a different rollout timescale. This Deployment Area reassignment can happen at any stage up until build is complete in the area. Other unforeseen changes outside the control of NBI can also impact the estimated date over the course of the rollout.

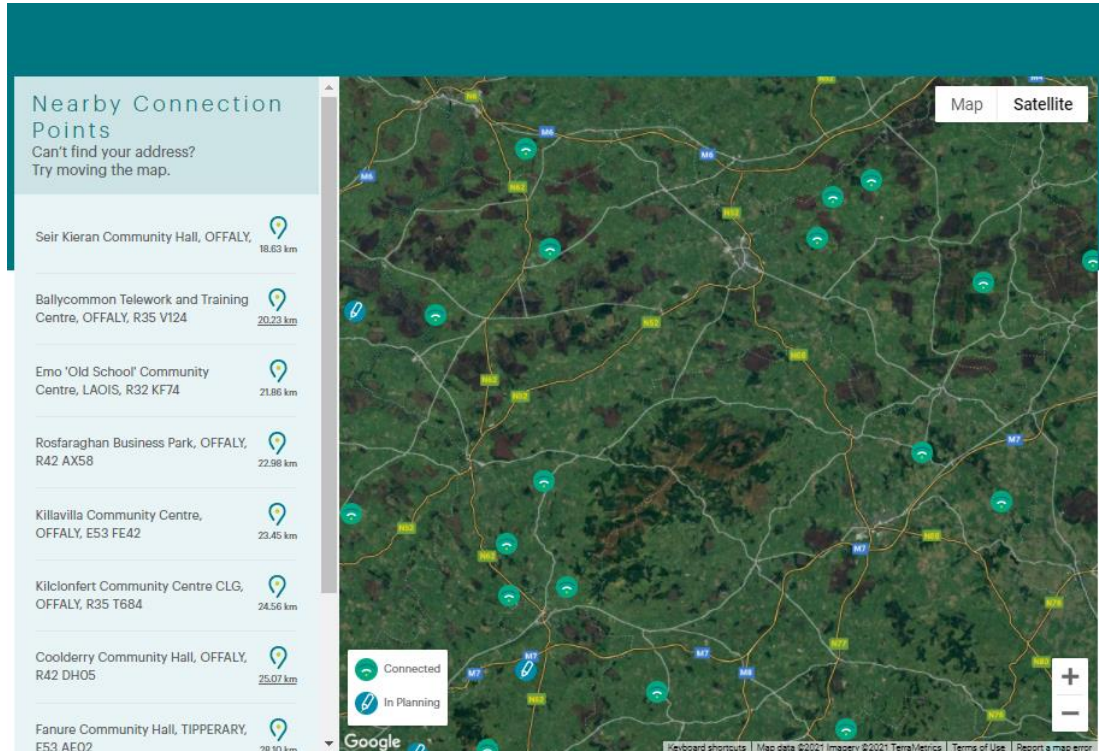
\*All BCP's are subject to change. This may be due to unforeseen circumstances, or those outside of NBI's control.



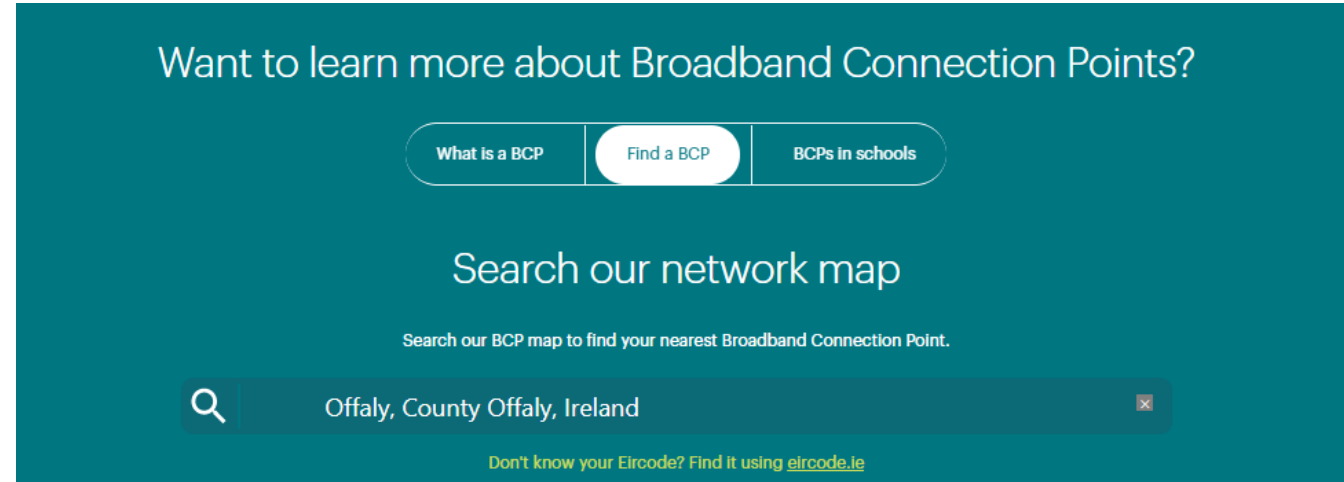
# BCP Search

Members of the public can easily determine where their nearest BCP is located.

[www.nbi.ie/bcp-map/](http://www.nbi.ie/bcp-map/)



\* All BCPs are subject to change. This may be due to unforeseen circumstances, or those outside NBI's control.

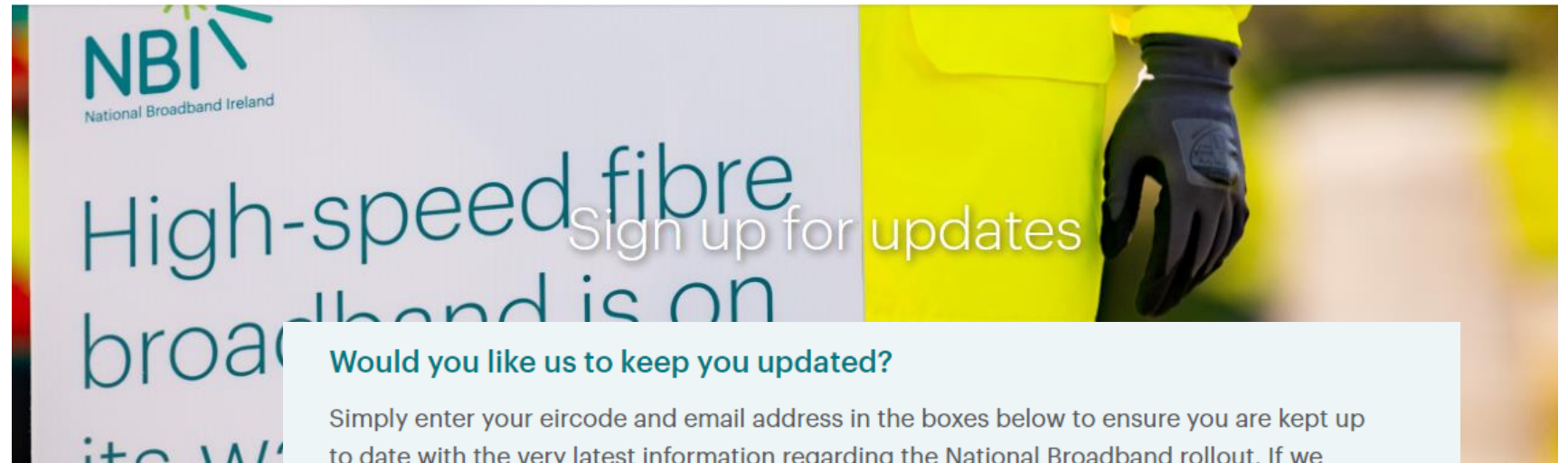


## Eircode Search Example – County Offaly

# Sign Up For Updates

The easiest way for members of the public to remain updated on the project status in their area is to **register on our website** to receive automatic updates.

[www.nbi.ie/eoi](http://www.nbi.ie/eoi)



**NBI**  
National Broadband Ireland

High-speed fibre  
broadband is on its way

Sign up for updates

Would you like us to keep you updated?

Simply enter your eircode and email address in the boxes below to ensure you are kept up to date with the very latest information regarding the National Broadband rollout. If we have your details, we can contact you when service becomes available in your area.

First Name Last Name Eircode

Email

**KEEP UP TO DATE**

NBI does not share or sell your personal information. Your data is strictly used within NBI group of companies for the purposes of the National Broadband Plan rollout. Please refer to our [Privacy Policy](#) for further information.

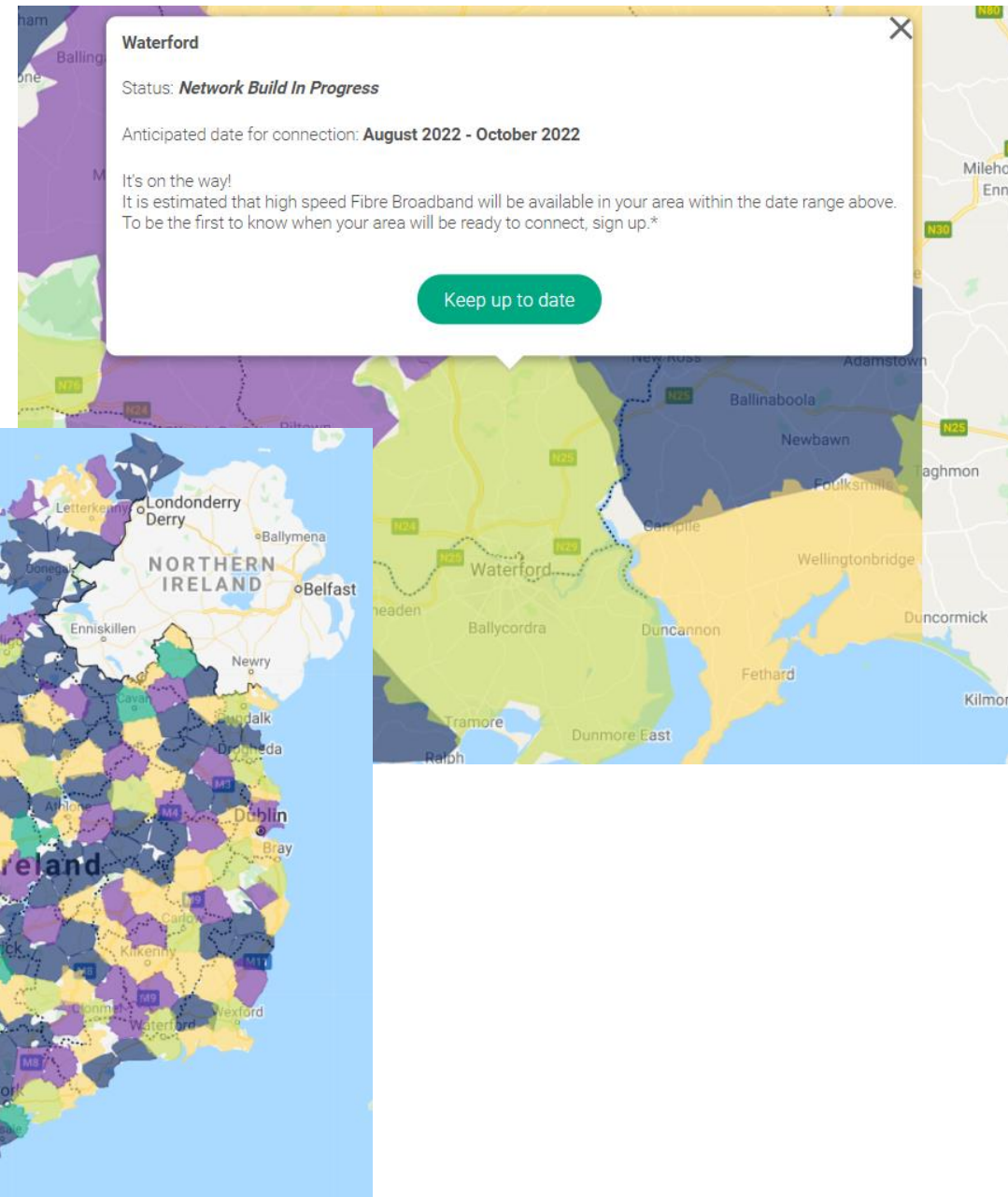
# Interactive Deployment Area Map

A simple way to keep up to date and understand the status of different Deployment Areas, is to visit our [interactive map](#)

[www.nbi.ie/where-are-we-working/](http://www.nbi.ie/where-are-we-working/)

The map

- Is colour coded to see the various status of each Deployment Area
- Can zoom in to areas of interest
- Is clickable to reveal more details for that specific area



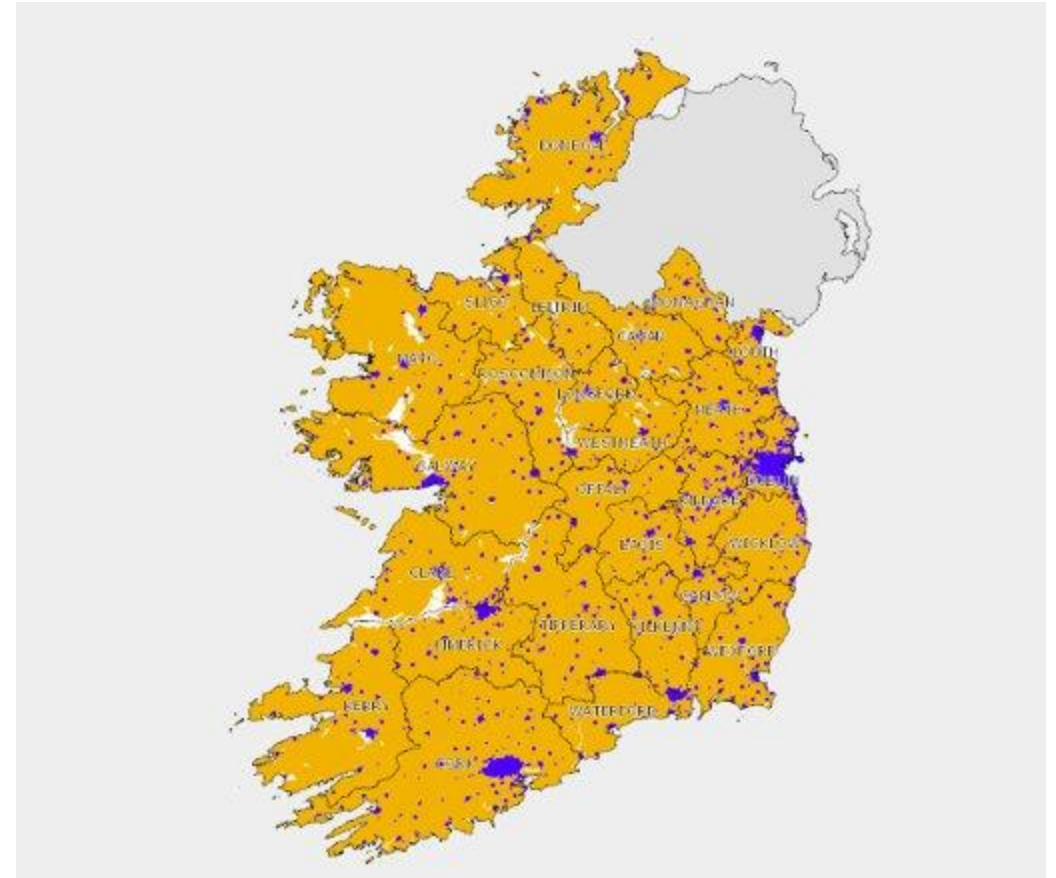
# Not In the IA / Not Getting 30Mbps

If members of the public are not in the Intervention Area but still cannot get high speed broadband from broadband providers in their location, the Department of Communications has a process to review.

This review can potentially move premises from the “blue” part of the map to the “amber” part of the map.

Members of the public should contact the Department of Communications at [broadband@decc.gov.ie](mailto:broadband@decc.gov.ie) to pursue this.

It would be helpful if members of the public could advise the Department of any operators, they may have contacted in relation to servicing their property.



**AMBER areas** - the target areas for the State intervention of the National Broadband Plan.

**BLUE areas** - where commercial operators are delivering or have indicated plans to deliver high speed broadband services.



Sign up on **[www.nbi.ie](http://www.nbi.ie)**  
to keep up to date with developments in your area

Email for political reps: **[reps@nbi.ie](mailto:reps@nbi.ie)**

Contact us on: **0818 624 624**  
email: **[contactus@nbi.ie](mailto:contactus@nbi.ie)**



Rialtas  
na hÉireann  
Government  
of Ireland

Tionscadal Éireann  
Project Ireland  
**2040**