



Kilkenny County Council –June 2023



Rialtas Áitiúil Éireann
Local Government Ireland

DRAFT NATIONAL WASTE MANAGEMENT PLAN FOR A CIRCULAR ECONOMY

DRAFT PLAN CONSULTATION PROCESS

The Statutory Consultation Phase will run from

Wednesday the 3rd of May 2023 until **4pm on Wednesday the 5th July**.

The consultation phase will be supported by a communications campaign including press release, press advert, radio and social/digital. All information, including how to make a submission will be available on mywaste.ie.

DRAFT NATIONAL WASTE MANAGEMENT PLAN FOR A CIRCULAR ECONOMY



VOLUME I
CURRENT SITUATION AND CHALLENGES

DRAFT NATIONAL WASTE MANAGEMENT PLAN FOR A CIRCULAR ECONOMY

DRAFT NATIONAL WASTE MANAGEMENT PLAN FOR A CIRCULAR ECONOMY



EXECUTIVE SUMMARY

DRAFT NATIONAL WASTE MANAGEMENT PLAN FOR A CIRCULAR ECONOMY



VOLUME III
DELIVERY ROADMAP

DRAFT NATIONAL WASTE MANAGEMENT PLAN FOR A CIRCULAR ECONOMY



VOLUME IV
SUPPORTING DOCUMENTATION

DRAFT NATIONAL WASTE MANAGEMENT PLAN FOR A CIRCULAR ECONOMY



VOLUME V B
NATURA I IMPACT STATEMENT (NIS)

VOLUME V A
SEA ENVIRONMENTAL REPORT

THIS PLAN IN NUMBERS:

1

Plan
Ambition

6

National
Targets

13

Core
Policies

16

Focus
Areas

73

Targeted
Policies

83

Priority
Actions

51

Key
Deliverables

National Plan Video



Rialtas Áitiúil Éireann
Local Government Ireland

SUBMIT SUGGESTIONS TO WWW.MYWASTE.IE



Concerns Raised by Elected Members



Green Washing

- Unsubstantiated exaggerated false marketing claims regarding environmental sustainability
- **EU proposing common criteria against green washing**
 - 18 months to come into force
 - Clear audited regime for environmental claims and labels
 - Ensures consumers receive trustworthy information

Deposit –Return Scheme-in place 1st Feb 2024



Ireland's new Deposit Return Scheme

Ireland will soon be introducing a Deposit Return Scheme. In February 2024, when you buy a drink in a plastic bottle, aluminium or steel can that features the Re-turn logo, you pay a small deposit in addition to the price of the drink. When you return your empty, undamaged container to any retail outlet, you get your deposit back in full.

Producer Registration

Retailer Registration

- All beverage containers from 150ml up to 3 litres are included in the new scheme (PET, Aluminium& Steel)
- 15c.. deposit 150ML-500mls
- 25c..deposit 500ml to 3L
- 768 RVMs across the country



Reducing Packaging at Supermarkets

Join The Repak Members' Plastic Pledge and let's deliver a more sustainable future for Ireland



1. Prevent Waste

Focus on prevention of plastic packaging waste by minimising single use packaging and promoting reuse.



2. Support the Circular Economy

Support Ireland to deliver the Circular Economy plastic packaging recycling targets of: 50% of all plastics recycled by 2025 and 55% of all plastic packaging recycled by 2030, as set out by the European Commission.



3. Simplify Polymers

Reduce complexity within the plastic packaging supply chain by simplifying polymer usage and eliminating non-recyclable components in all plastic packaging by 2030.



4. Use Recycled

Help build the circular economy for used plastic packaging by increasing the use of plastic packaging with recycled content.



5. Avoid Food Waste

Ensure the reductions in use of plastic packaging do not jeopardise opportunities to achieve Ireland's goal of a 50% reduction in food waste by 2030, as set out in Ireland's food waste charter.

What we have achieved since the 2018 launch



23,000 tons of plastic packaging waste prevented.



26,500 tons of recycled plastic incorporated into packaging or components.



18.6% average reduction in plastic packaging reported by Plastic Pledge Members.

Our Rewards



We reward our Members for their outstanding achievements.

Our Partners & Stakeholders



Róinn Cumarsáide, Gníomhaíocht ar son na hAeide & Comhshaoil
Department of Communications, Climate Action & Environment



Ireland's guide to waste
mywaste



Repak and Pledge members collaborate with partners and stakeholders through our Working Group.

Contact us

For further information on the Repak Members' Plastic Pledge, visit repak.ie/members/plastic-pledge, email brian.walsh@repak.ie or call 01 4670 190.

Mixing of Segregated Wastes dual or triple compartment trucks



- IWMA need to an awareness programme explaining how the truck works.
- Compartment 1 Residual
- Compartment 2 Recycling
- Compartment 3 Food Waste

Support for Reuse Enterprises

<https://greenandsocial.virtualeventspace.io/>



- Applications to CEIG Scheme run by DECC
- Kilkenny LEOs should encourage the development of reuse schemes in your local area.

Agricultural Chemicals & Storage of Farm Film Plastics

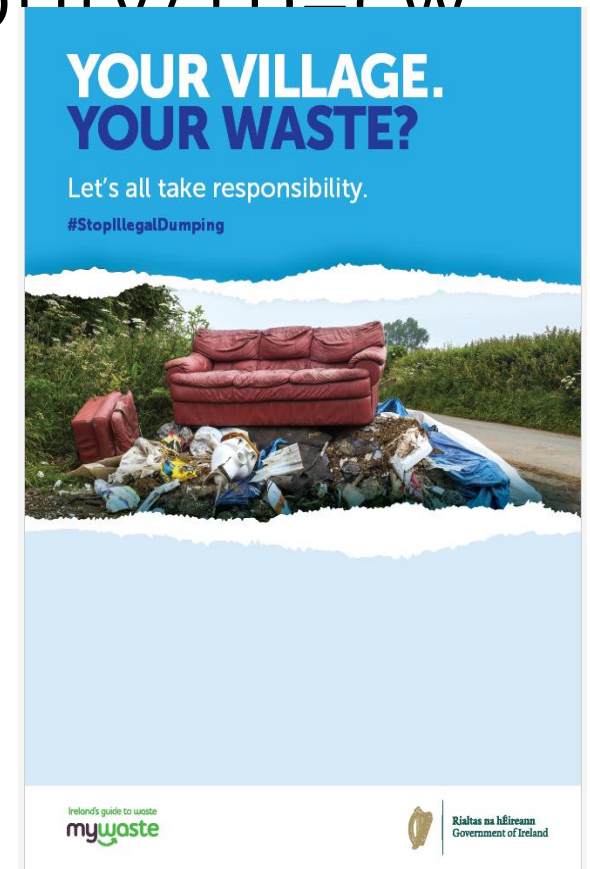
- DAFM must ensure that there is a collection in place for hazardous agricultural waste including antimicrobials.. No further progress on this projects



- IFFPG and EPR scheme are responsible for the collection and recovery of silage wrap and similar materials..
- IFFPG have solutions for all wrap currently collected in 2022 & 2023 & that all storage will have been cleared in advance of 2024;

Illegal Dumping/Littering Requires a significant behaviour change in Ireland Anti-dumping Hub

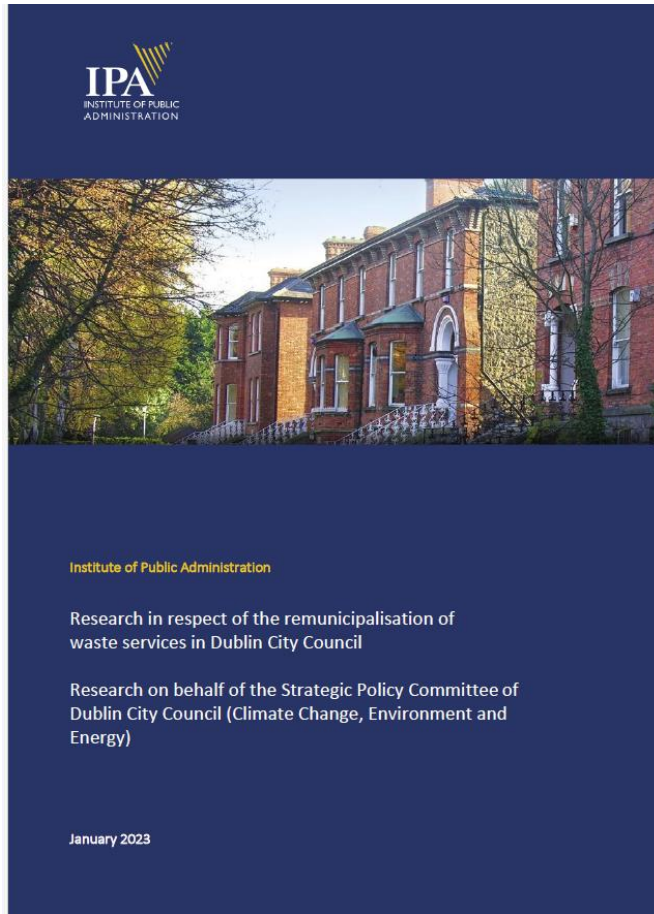
<https://www.mywaste.ie/local-authority/?p=cw>



Waste Charges not within the remit of local or national government under current legislations

- **National Waste Collection Permit Office** are carrying out a research report into incentivised charging is it working.
- Minister has reconstituted “ **The Price Monitoring Group**” market analysis of cost of household waste collection

Re-Municipalisation of Waste Collections



- Legal Framework does support Re-municipalisation
- Requires Legislative change
- Costs are excessive
- Private Sector own the processing facilities

Textile Waste & Fast Fashion


- National Textile Working Group set up by DECC
 - Flow of textile Waste
 - Awareness around fast fashion
 - Buying second hand
- The EU Commission has launched a pan-EU, multilingual campaign to promote one of our key deliverables under the Circular Economy pillar: EU Strategy for Sustainable and Circular Textiles, to run for two months.



More Education about what goes in three bins

<https://www.mywaste.ie/business/>

posters



recycle posters

size

☒ A4 portrait ☐ A4 landscape


☐ A3 portrait ☐ A3 landscape

language

☒ English ☐ Irish ☐ bilingual

< 0 >

add to order →



food posters

size

☒ A4 portrait ☐ A4 landscape


☐ A3 portrait ☐ A3 landscape

language

☒ English ☐ Irish ☐ bilingual

< 0 >

add to order →



general posters

size

☒ A4 portrait ☐ A4 landscape

☐ A3 portrait ☐ A3 landscape

language

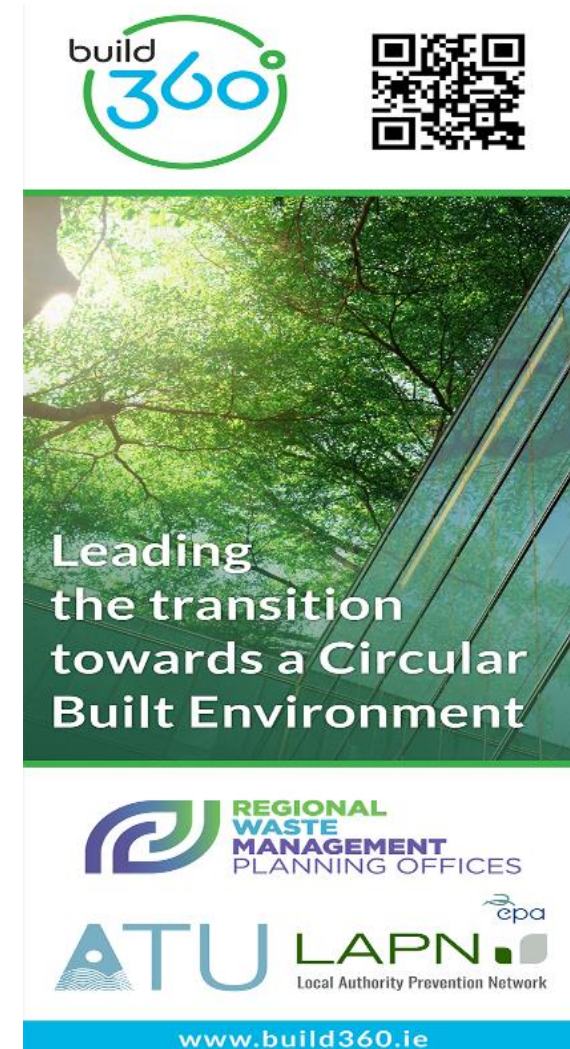
☒ English ☐ Irish ☐ bilingual

< 0 >

add to order →

Construction and Demolition Waste

- National Criteria –Recycled Aggregate-End of Waste
 - Submitted to EU Commission consultation open until 23.08.23
- National Criteria -Site Won-Ashpalt/Road planings –By-product
 - Submitted to EU Commission consultation open until 12.09.23
 - CA sites –Reuse Areas
- National Criteria –Green field Soil & Stone – By-product
 - Draft Consultation Document August 2023
- Build 360.ie Website



CA sites and REUSE Areas

- CA Site Statistic Collection and Review
- Review will clear the way for first 10 pilot sites to have a reuse area
- Reuse area accepts various items from residents and makes them available to organizations and individuals for reuse

10

Sites for
Reuse (min)

Target 3B
Reuse Facilities

Provide for reuse at 10 Civic Amenity Sites, minimum



Public Issues raised in consultation period

- Bring banks within 500m of every householder
- Prohibit all fast fashion outlets in Ireland
- Provide more public water fountains for people to refill water bottles
- Prohibit companies from advertising single use
- Ban disposable items: vapes, batteries that aren't rechargeable, razors, lighters, etc
- Ban sale of plastic bottles in all government, public, semi state and public schools in Ireland.
- Inspecting fast food chains for waste management and apply waste generation tax
- Focus on reducing food packaging at source (ie in the supermarkets/producers)
- Return to glass packaging "Bring back the milkman"

Public Issues raised in consultation period

- Lack of awareness around what goes in which bin is a big issue/Clarity on contamination,
- Tax or penalise companies based on the type of packaging they use.
- Create financial incentives for using correct bins.
- More free repair workshops in all cities and towns.
- Funding for enterprises willing to innovate in waste repurposing.
- Hospitals should have to take back scheme for crutches.
- Construction companies fined for not segregating waste correctly and especially plasterboard
- Product designers need to be responsible for their designs being circular



Rialtas Áitiúil Éireann
Local Government Ireland

DRAFT NATIONAL WASTE MANAGEMENT PLAN FOR A CIRCULAR ECONOMY

DRAFT PLAN CONSULTATION PROCESS

The Statutory Consultation Phase will run from

Wednesday the 3rd of May 2023 until **4pm on Wednesday the 5th July**.

The consultation phase will be supported by a communications campaign including press release, press advert, radio and social/digital. All information, including how to make a submission will be available on mywaste.ie.