



Coiste um Fhorbairt Pobail Áitiúil  
Chill Chainnigh  
Kilkenny Local Community Development  
Committee

Kilkenny Local Community Development  
Committee (LCDC)  
Annual Report 2022

*As Adopted by Kilkenny LCDC at its meeting held 17<sup>th</sup> February, 2023*

## Background

Local Community Development Committees (LCDC's) are required, under the provisions of Section 128B of the Local Government Act 2001, to prepare, adopt and submit an annual report to the local authority, no later than the 31<sup>st</sup> March each year, in respect of the performance of its functions in the previous calendar year. The annual report should be co-ordinated with the preparation of the local authority's annual report and include an outline of Local Community Development Committee (LCDC) activities in the relevant period.

## Functions of the LCDC

The LCDC functions set out in the Act are as follows:

- the preparation and adoption of an LECP,
- implementing the community elements of the LECP,
- reviewing the LECP and amending it or amending any element of it,
- monitoring, and reviewing the implementation of the plan on an ongoing basis,
- co-ordinate, manage and oversee the implementation of community development programmes that have been approved by the Council, agreed between the Committee and a public authority and to ensure that any plans or strategies are implemented in accordance with the community elements of the LECP,
- seeking to ensure effectiveness, consistency, co-ordination and avoid duplication between local and community development programmes,
- pursuing the co-ordination of all local community and coordination of programmes so as to optimise resources for the benefit of local communities and improve efficiency with which public funded local and community development resources are used,
- to consider and adopt a statement in respect of the economic elements of a draft plan and
- not later than 31<sup>st</sup> March each year adopt and submit to the Local Authority a report relating to the performance of its functions in the preceding calendar year.

## Membership

The membership of the Kilkenny LCDC is 19. In addition, Kilkenny LCDC has 1 Associate Member. The composition of the LCDC is such that it brings together the expertise and skills of people actively working with local development, community development and economic, cultural and environmental organisations and local authority members, officials and state agencies to implement a joined up, cross sectional approach to local and community development programmes.

Declan Gibbons, Community Pillar from the Public Participation Network continued in his role as Chairperson. The 3-year tenure period is due to expire in August 2023. Colette Byrne, Vice-Chair and Chief Executive of Kilkenny County Council retired during the year and was replaced by Sean McKeown, Acting Chief Executive KCC as Vice-Chair. New members welcomed during the year included, Aileen McGrath, Local Enterprise Officer, Paul O’Rahilly, Martin Rochford, Toluwani Akaehomen and Michael Fitzgerald. There was one vacancy at the end of 2022 to be filled by the Chamber of Commerce.

A full listing of members and their nominating bodies is included in *appendix No 1*.

### Role of Chief Officer

The Chief Executive of the Local Authority has a legal obligation to assign staff to assist the LCDC in performing its functions including the assignment of a staff member to the position of Chief Officer.

The Chief Officer has responsibility for carrying out, managing and controlling generally the administration and business of the Committee and for providing ongoing support. In particular, the role envisages the facilitation and promotion of partnership and interagency working, managing membership, being a link and conduit between the LCDC and the Local Enterprise Office and SPC 1 and the Department, providing capacity building interventions, pursuing funding streams and broadening the work of the Committee, providing advice and guidance and bringing local authority experience to the Committee.

Ms. Annette Fitzpatrick continued in her role as Chief Officer during 2022.

### LCDC Meetings

Due to continued public health restrictions imposed at the start of the year a number of meetings were held remotely over Microsoft Teams. The LCDC met on six occasions in 2022. With 3 held on Microsoft Teams and 3 in person meeting additionally there were 2 joint meetings with SPC1 on the development of the LECP held on 21st July and 16<sup>th</sup> November.

### Engagement with Stakeholders.

It is the policy of the LCDC to meet Local Economic and Community Plan implementing partners in connection with their LECP actions and to consider issues of mutual concern. During 2022 the LCDC heard presentations from:

Healthy Ireland Implementing partners with regards progress and outcomes of their actions

- Community Development Programme- Kilkenny Traveller Community movement KTCM
- Community Engagement Programme –Kilkenny One Parent Families
- Healthy Ireland – Healthy Kilkenny Coordinator

## Local Economic and Community Plan. (LECP)

The LCDC monitors and reviews the implementation of the Local Economic Community Plan. Work commenced early in 2022 on the preparation of the new LECP 2023-2028.

An advisory group was established to assist in the preparation and drafting of the new LECP and have an important role throughout the process. The following is the membership of the Advisory Group:

Annette Fitzpatrick, Chief Officer  
Declan Gibbons, Chair, Kilkenny LCDC  
Denis Malone, Director of Services, Economic Development – SPC 1  
Aileen McGrath, LEO  
Marion Acreman, Chamber and SPC 1  
Mary Mulholland, Director of Services, SPC 5

Turley consultants were appointed to support the process. Great progress was made during 2022 in the development of the new plan with the agreement of 10 high level goals with supporting high level objectives. This was achieved following public consultation events and engagement with stakeholders, review by the Advisory Steering Group and joint meetings of SPC 1 and the LCDC. Work continues on the development of outcomes and actions for the first 2 year implementation plan. It is expected that the final plan will be ready for adopting by the LCDC and SPC 1 and the full Council at their meeting scheduled in April 2023.

## Social Inclusion and Community Activation Programme. (SICAP)



The Social Inclusion and Community Activation Programme (SICAP) 2018-2022 is the successor programme to the Social Inclusion and Community Activation Programme (SICAP) 2015-2017. This programme has been extended to cover 2023. SICAP's aim is to reduce poverty, promote social inclusion and equality through local, regional and national engagement and collaboration. It has two high level goals:

### 1. **Goal 1: Supporting Communities**

To support communities and target groups to engage with relevant stakeholders in identifying and addressing social exclusion and equality issues, developing the capacity of Local Community Groups, and creating more sustainable communities.

### 2. **Goal 2: Supporting Individuals**

To support disadvantaged individuals to improve the quality of their lives through the provision of lifelong learning and labour market supports.

## **Funding**

SICAP is funded by the Department of Rural and Community Development with co-funding from the European Social Fund (ESF) as part of the ESF Programme for Employability, Inclusion and Learning 2014-2020. *Kilkenny SICAP will have been awarded approximately €3,405,059 between 2018 and 2022.*

## **Delivery Structure**

SICAP is managed locally by Kilkenny Local Community Development Committee (LCDC) with support from Kilkenny County Council. It is delivered on the ground by County Kilkenny LEADER Partnership (CKLP). Pobal acts as the agent of the Department of Rural and Community Development with respect to national management and oversight of the programme.

## **Kilkenny Local Community Development Committee (LCDC)**

Kilkenny Local Community Development Committee (LCDCs) is the Contracting Authority for SICAP in County Kilkenny. Kilkenny LCDC is the key decision-maker in terms of annual planning, monitoring and oversight of SICAP services in County Kilkenny.

## **Kilkenny County Council**

Kilkenny County Council supports the LCDC in managing the programme and provides administrative supports. It also has a role in relation to reviewing and enforcing the obligations of the Programme Implementer.

## **County Kilkenny LEADER Partnership**

Programme Implementer (PIs) deliver SICAP at a local level as per their annual plan. They report to the LCDC on their progress in carrying out these actions. They engage with the programme target groups. County Kilkenny LEADER Partnership is the current PI for SICAP services across Co. Kilkenny.

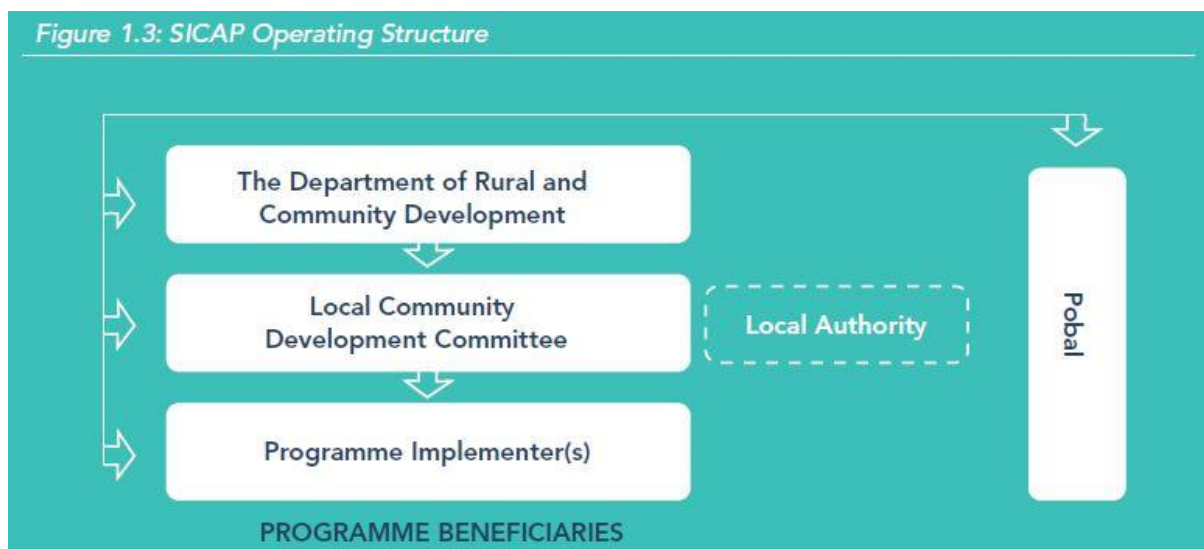
## **Target Groups**

SICAP supports a range of groups in society which are disadvantaged and marginalised and unable or unlikely to access mainstream supports. Pre-defined target groups have been set for SICAP and these have been selected based on the current socioeconomic context, the level of need in society and government priorities. See below for a list of the 13 identified target groups. Further Identified as a specific target group mid 2022 were Ukrainian displaced persons and specific funding of €89,262 was granted to the PI to support this group. For 2023 Ukrainians are a pre-defined group with further funding available.

All beneficiaries of programme supports must belong to one of the 13 SICAP target groups which are:

Disadvantaged Children and Families	People living in Disadvantaged Communities
Disadvantaged Young People (aged 15 – 24)	People with Disabilities
Disadvantaged Women	Roma
Emerging Needs Group	Travellers
Lone Parents	The Disengaged from the Labour Market (Economically Inactive)
Low Income Workers/ Households	The Unemployed
New Communities	

Nationally SICAP is delivered through the framework for local development.



### **The Department of Rural and Community Development**

The Department is the lead and funding department for SICAP, including in respect of ESF co-funding and the YEI special allocation. The Department channels funding directly to LCDCs

### **Pobal**

Pobal provides a national oversight role in respect of the SICAP programmatic and operational requirements and provides the Department with regular county, regional and national programme progress reports. Pobal undertakes a technical review of the financial reports,

monitoring reports and annual plans, submitted by Programme Implementers (via the IRIS on-line system), to ensure compliance with the SICAP framework, financial rules and the monitoring of all performance targets. Pobal can recommend any necessary actions to the Department and/or the LCDC/Local Authority where issues and concerns relating to the management and delivery of SICAP are identified. Pobal provides capacity building supports to LCDCs to assist in the strategic planning process and in delivering and evidencing quality standards in the programme. This involves providing some ongoing technical support to Programme Implementers locally, as well as thematic working, dissemination and sharing of best practice to support the delivery of the SICAP goals and objectives.

### SICAP Sub-Group

Kilkenny LCDC has appointed a SICAP sub-group to undertake the role of annual planning, monitoring and oversight of SICAP services in County Kilkenny. This group makes recommendations with regards SICAP to the LCDC.

The SICAP subgroup is made up of the Chief Officer of the LCDC, the PPN Social Inclusion representative, a Representative from the Family Resource Centre Programme locally, the Department of Employment and Social Protection and the Kilkenny Carlow Education and Training Board. Kilkenny County Council Community section staff support the subgroup.

The Subgroup met 4 times in 2022 to undertake and agree the SICAP annual Plan, the Mid-Year Review, the SICAP- Annual engagement meeting with Pobal and the End of Year Review. SICAP has performed well over 2022 and has exceeded Targets outlined below:

- KPI 1 Annual target of 26 is at 33 and is overachieved at 123%
- KPI 2 Annual target of 468 is at 508 and is overachieved at 108%

Sicap has underachieved in the percentage of KPI 2 (people living in disadvantaged areas, engaged on a one to one) the end of year target is 26% and 24.36 % was achieved. This is in line with 2021 figures at 94% target reached.

### Public Participation Network (PPN)

Kilkenny LCDC has 3 Social Inclusion Representatives, 1 environmental and 2 community representatives from the PPN. The PPN have held the chair of the LCDC since its inception. The PPN increased its membership in 2022 to 446, with 37 new registrations in 2022.

Groups registered within each pillar:

Social Inclusion	98
Community	319
Environment	29

*PPN Membership by pillar*

## Community Enhancement Programme Funding (CEP)

The Scheme is funded by the Department of Rural and Community Development and administered by the Local Community Development Committees (LCDCs) in each Local Authority area. It provides funding to communities across Ireland to enhance facilities targeted towards disadvantaged areas as identified in the Local Economic and Community Plan (LECP).

In November 2021, the Department of Rural and Community Development announced the Community Activities Fund under the Community Enhancement Programme. The grant applications closed in February 2022.

Kilkenny LCDC received an allocation of €272,638. €166,612 was allocated for use towards running/operating costs and €106,026 for capital funding; 30% of the overall funding was made available for small grants of €1000 or less. Kilkenny LCDC received 102 applications with a total of amount of €800,537.94 requested.

Grant limits	No. of Applications Received	No. of Grants Awarded
Up to €1,000	19	14
Up to €5,000	42	30
Up to €20,000	41	19

*Community Activities funding 2022*

The Department of Rural and Community Development announced the Community Support Fund 2022 in November 2022. The Scheme is to be administered under the CEP Programme. Kilkenny received an allocation of €290,749 and will be advertised with grants being awarded in 2023.



## Healthy Ireland Fund

Healthy Ireland is a government-led initiative aimed at improving the health and wellbeing of everyone living in Ireland. The Healthy Ireland, A Framework for Improved Health and Wellbeing 2013-2025 has 4 key goals:

Goal 1: Increase the proportion of people who are healthy at all stages of life

Goal 2: Reduce health inequalities

Goal 3: Protect the public from threats to health and wellbeing; and

Goal 4: Create an environment where every individual and sector of society can play their part in achieving a healthy Ireland.



The Department of Health and Pobal continued to support the third round of the Healthy Ireland Fund (HIF) up until March 2022. The grant period for Round 4 commenced in June 2022 and will run until the 31 December 2025, with a new outcomes-led approach to be delivered from 2023-2025.

Total Funding awarded to Kilkenny LCDC June-December 2022 = €40,000

Total Funding awarded to Kilkenny LCDC Social Prescribing June-Dec 2022 = €23,629

Total Funding awarded to Kilkenny LCDC 2023 = €75,000

Total Funding Awarded Kilkenny LCDC 2024 = €40,000 (minimum allocation)

Total Funding awarded to Kilkenny LCDC 2025 = €40,000 (minimum allocation)

Total = €218,629 (minimum)

### **Healthy Kilkenny Actions 2022:**

**Kilkenny One-Parent Community (KOPC):** The LCDC Lone Parents Task Group was established in 2019 to identify the key needs, map the key issues and service gaps for one-parent families in Kilkenny. The Needs Analysis 'Voice and Visibility' highlighted the key issues that needed to be addressed and recommended actions for implementation. The Healthy Ireland fund has supported the engagement with one-parent families in Kilkenny and the development of a Peer Network and information hubs, awareness campaigns, informal events and signposting resources. In September 2021, Kilkenny County Council, Kilkenny LCDC, Tusla and Kilkenny Leader Partnership allocated funding for a Development Support Worker in Fr. McGrath FRC to continue the support of Kilkenny One-Parent Community Peer Network, 2 days per week until December 2022. The role offers opportunities for the KOPC Network in terms of; capacity building, supervision and support, training and skills development, monitoring and evaluation. In 2022, The KOPC development worker, employed by Fr McGrath FRC allocated Healthy Ireland Funding to support the development of the KOPC Network, health and wellbeing programmes and social activities. Some of the programmes/activities included: Parenting When Separated, Creative Arts programme and celebration Workshops, Smartphone Photography, wellbeing and self-care workshop, coffee mornings, activities at the Watergate, Butler House and MacDonagh Junction.

**Newpark Close FRC Health and Wellbeing Programme:** Newpark FRC received funding to deliver a health and wellbeing programme with residents in Newpark, Kilkenny. The focus of the programme was Health and Wellbeing, Self-Care, Healthy Relationships and raising awareness of Domestic Abuse.

**Kilkenny Traveller Community Movement (KTCM) Health and Wellbeing Programme:** Families from the Travelling Community participated in a 10-week Health and Wellbeing Programme which included healthy eating, physical activity, parenting and mental health and wellbeing. A Health Facilitator, coordinated the programme and engaged with the families and encouraged them to participate in the programme twice a week. The outcomes from this

programme were hugely successful and had a positive impact on health behaviours for the families involved

**Kilkenny Recreational Sports Partnership: Physical Activity & Disability Action:** The Healthy Ireland Funding supported the delivery of physical activity programmes for people living with disabilities in Kilkenny. The following programmes were implemented: summer camps, walking programmes, woodlands for health/nature programmes, hand cycling etc. There has been good engagement from services and service users from L'Arche, SOS, TASK, St Patricks and NLN. KRSP highlighted there has been a great impact from the programmes and has impacted positively on health behaviours and participants mental health and wellbeing

**Kilkenny Leader Partnership: Kilkenny Social Prescribing:** The Healthy Ireland fund continued to support the Kilkenny Social Prescribing service up until December 2022. Social Prescribing is a non-medical service which tackles loneliness and isolation by creating a link between the client and voluntary and community services. Over 193 participants have been supported within the Service since it commenced in September 2020. A significant and positive outcome for the Kilkenny Social Prescribing Service is that it will be mainstreamed by the HSE from 2023.

### **Planning for the New Outcomes-Led Approach 2023-2025**

#### **Some of the new elements of the Fund in this round included:**

- The recruitment of a Healthy City/County Coordinator from June 2022 – December 2025
- The introduction of an outcomes led approach. A maximum of 2 outcomes to be selected from a predefined list of 5 outcome areas with 27 associated outcome indicators from the HI Framework with all activities orientated towards contributing to the selected outcome(s)
- A Healthy Ireland Fund Local Strategy (HIFLS) 2023-2025 to prioritise project outcomes based on local data/need in collaboration with local stakeholders

As part of the Healthy Kilkenny Consultation process in identifying local health outcome priorities the following processes were taken:

1. An Online survey that captured information from local agencies on target groups, health needs and priority areas and health and wellbeing outcomes in Kilkenny
2. A local Stakeholder Workshop in October 2022, to identify health priorities and explore opportunities for collaboration and alignment to the Healthy Ireland outcomes
3. In collaboration with the Healthy Kilkenny Committee, the recommendations on prioritisation of outcome areas were based on local knowledge from the committee members, Health Data from recommended sources advised by Pobal, Healthy Kilkenny Community Plan and previous Healthy Kilkenny consultations.

**Two Priority Outcome Indicators recommended by local consultation processes and approved by Kilkenny LCDC:**

1. **Perceived Health:** Increase in percentage of persons assessing their health to be very good or good based on EU SILC questions on self-perceived health
2. **Physical Activity:** Increase in the percentage of adults and children meeting physical activity guidelines.

The Healthy County Coordinator is working on the HI Fund Strategy in Q4 of 2022 and Q1 of 2023. This Strategy will include details of actions/interventions that will contribute to achieving the two outcomes selected for Kilkenny from 2022-2025, details of collaborating agencies, target groups and local health data. The local Healthy Ireland Strategy will be submitted to the Healthy Kilkenny Committee in January 2023, for approval.

**Appendix 1.****LCDC Membership at 31<sup>st</sup> December 2022.**

<b>Name of Member</b>	<b>Nominating Body – Public Representation</b>
1. Aileen McGrath	Local Enterprise Office
2. Michael A. Fitzgerald	Teagasc
3. Eileen Curtis	Education Training Board
4. Sean McKeown	Kilkenny County Council ( Vice Chair )
5. Julieanne Power	DEASP
6. Derval Howley	HSE - Associate member
7. Martin Brett	Elected Representative
8. Michael McCarthy	Elected Representative
9. Gerard Frisby	Elected Representative
10. Joe Lyons	Elected Representative
<b>Name of Member</b>	<b>Nominating Group - Private Representation</b>
11. Declan Gibbons	PPN Comm & Voluntary (Chairperson)
12. Patricia Brennan	PPN-Comm & Voluntary
13. Angela Hayes	PPN-Social Inclusion
14. Toluwani Akaehomen	PPN-Social Inclusion
15. Paul O' Rahilly	PPN-Social Inclusion
16. Martin Rochford	PPN-Environment
17. Bill O'Keefe	Irish Farmers Association
18. Margaret Clancy	Chamber of Commerce (Retired Nov 2022)
19. Denis Drennan	County Kilkenny Leader Partnership
20. Sheila Donnelly	Family Resource Centres