

2025



**Kilkenny County Council**  
**GRANTS BOOKLET**

# Kilkenny County Council GRANTS BOOKLET

<i>Introduction</i> .....	4
<i>Amenity Grants</i> .....	6
<i>Anti-Litter &amp; Anti-Graffiti Community Grant</i> .....	8
<i>Artists Connect Bursary</i> .....	14
<i>Artists Residency Bursary (Kilkenny)</i> .....	16
<i>Arts Act Grants</i> .....	18
<i>Built Heritage Investment Scheme 2025</i> .....	20
<i>CLÁR Programme</i> .....	22
<i>Commercial Premises Paint Scheme</i> .....	24
<i>Community &amp; Cultural Facilities Capital Scheme</i> .....	26
<i>Community Climate Action Programme</i> .....	28
<i>Community Events Grant Scheme</i> .....	44
<i>Community Heritage Grants 2025</i> .....	46
<i>Community Involvement in Roadworks</i> .....	48
<i>Community Monuments Fund 2025</i> .....	50
<i>Community Water Development Fund</i> .....	52
<i>Creative Ireland &amp; Cruinniú na nÓg Grant Scheme 2025</i> .....	54
<i>Estate Management Grant</i> .....	56
<i>Festival Grants Scheme</i> .....	58
<i>Graveyard Grant Scheme</i> .....	60
<i>Heritage in Schools Programme</i> .....	62
<i>Historic Structures Fund 2025</i> .....	64
<i>Historic Thatched Buildings 2025</i> .....	66
<i>Housing Grants (Housing Adaptation Grant/Mobility Grant/Housing Aid for Older People)</i> .....	68
<i>Kilkenny Recreation and Sports Partnership</i> .....	70
<i>Local Enterprise Office</i> .....	72
<i>Local Energy Efficiency Grant</i> .....	74
<i>Local Enhancement Programme 2025</i> .....	76
<i>Local Improvement Schemes (LIS)</i> .....	78
<i>Outdoor Recreation Infrastructure Scheme</i> .....	80
<i>Small Business Vacant Premises Incentive Scheme</i> .....	82
<i>Town &amp; Village Renewal</i> .....	84
<i>Vacant Property Refurbishment Grant (Croí Cónaithe Towns Fund)</i> .....	86

# HELP US HELP THE POLLINATORS

Leading the way in pollinator protection, Kilkenny County Council became Ireland's first local authority to officially partner with the All-Ireland Pollinator Plan.

Kilkenny County Council's Heritage Office has a selection of Pollinator Friendly advice leaflets for the Garden, Local Communities, Faith Communities and Farmland communities.

To find out what you can do to help our pollinators and get a free copy of whichever leaflet suits your purpose please email the Heritage Office at [heritage@kilkennycoco.ie](mailto:heritage@kilkennycoco.ie)

## VISIT:

[kilkennyheritage.ie/  
natural-heritage/pollinators/](http://kilkennyheritage.ie/natural-heritage/pollinators/)

  
**Kilkenny**  
Going Green

If you are applying for grants please consider including actions which support pollinators, where appropriate.

*For more info visit*

**WWW.POLLINATORS.IE**





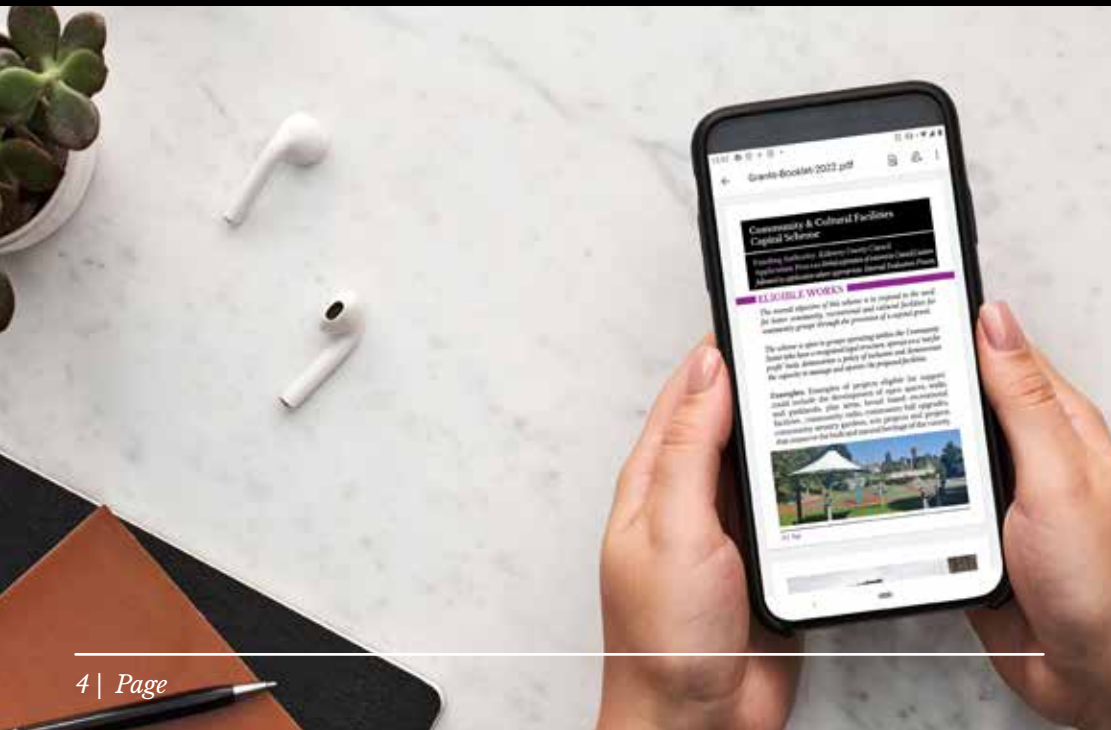
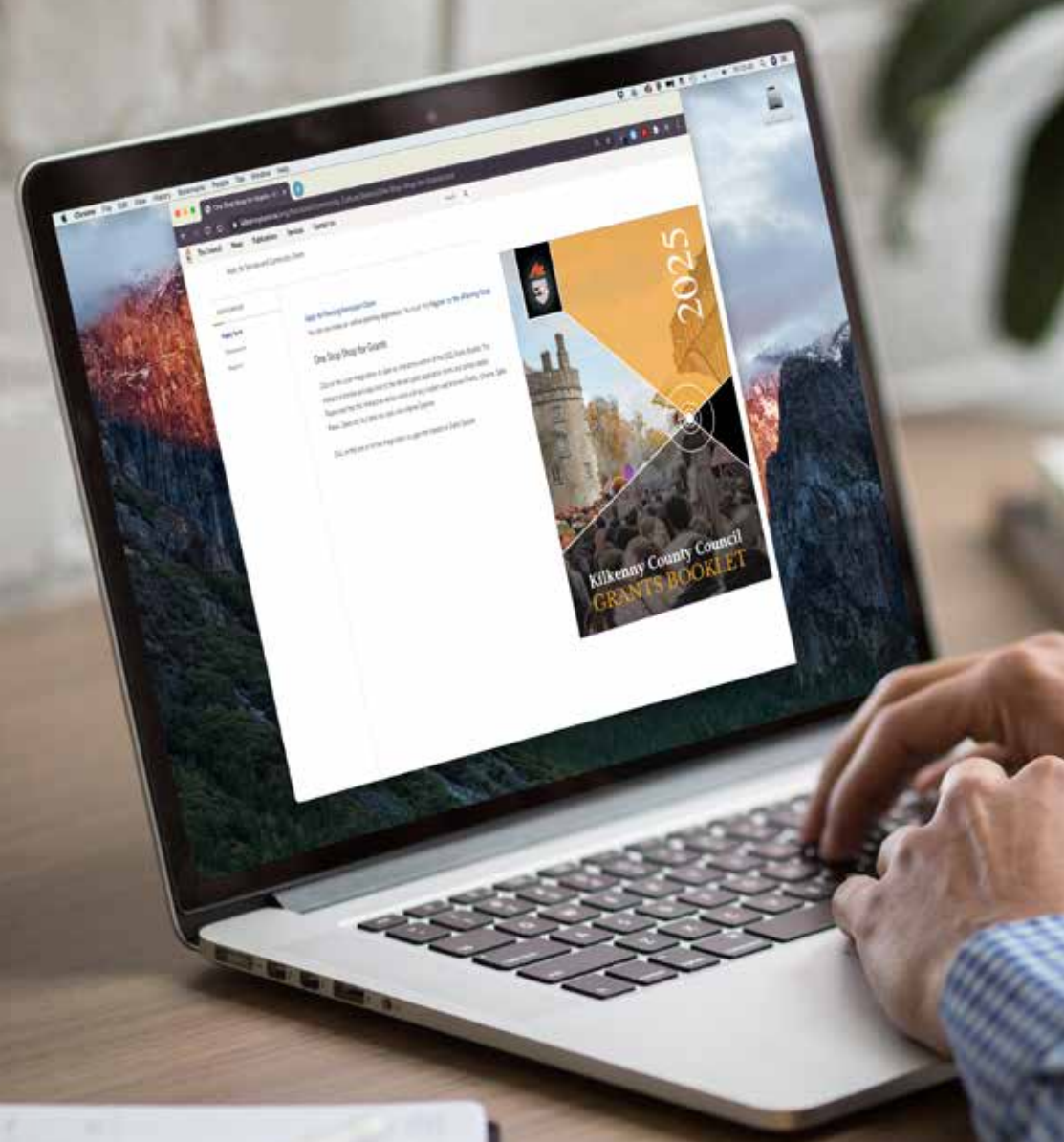
# INTRODUCTION

This grant booklet summarises the key elements of Kilkenny County Council and other National Community Grants. It informs community groups of funding streams available to carry out and complete various types of community activities and projects in their neighbourhoods.

In order to improve how we communicate grant information and availability we have also developed an online one stop shop which can be accessed at:



[www.kilkennycoco.ie/eng/Services/Community\\_Culture/Grants/One-Stop-Shop-for-Grants.html](http://www.kilkennycoco.ie/eng/Services/Community_Culture/Grants/One-Stop-Shop-for-Grants.html)



# Amenity Grants

**Funding Authority:** *Kilkenny County Council*

**Application Process:** *Internal Assessment*

## ELIGIBLE WORKS

*The Amenity Grant Scheme is intended to improve outdoor community facilities for the protection or improvement/enhancement of natural or man-made amenities e.g. grass cutting, tree & flower planting, purchase of small gardening equipment/tools.*

### Works that will qualify include:

- Improvements to or maintenance of, parks and open spaces, green areas in residential areas and other public open areas.
- Works for the conservation or protection of natural or man-made amenities, scenic walks, nature trails, planting of trees, flowers, shrubs etc.

(This scheme will only cover public amenity areas where access is available free of charge, it will not cover clubs where a membership fee applies).

**Examples:** General upkeep and maintenance of amenity areas and grass cutting in housing estates.



<b>Target Group:</b>	Local Community Groups, Residents Associations, Tidy Towns Groups		
<b>Budget:</b>	€140,000	<b>Closing Date:</b>	28th March 2025
<b>Grant Amount:</b>	€400-€2000		
<b>Grant Amount:</b>	If you are successful in your application, receipts relating to expenses incurred along with a photo of the completed approved project must be submitted before a grant will be paid.		
<b>Contact:</b>	<b>Parks Department</b> <b>Tel:</b> 056-7794441 <b>Email:</b> lisa.bourke@kilkennycoco.ie		

[www.kilkennycoco.ie/eng/Services/Parks/Amenity\\_Grant\\_Scheme/](http://www.kilkennycoco.ie/eng/Services/Parks/Amenity_Grant_Scheme/)



## Anti-Litter and Anti-Graffiti Community Grant

**Funding Authority:** *Kilkenny County Council*  
**Application Process:** *Internal Assessment & Decision*

### ELIGIBLE WORKS

*Projects that support community groups/organisations to combat litter and graffiti issues in their local community.*

#### Projects eligible for funding include:

- Community clean ups on public lands
- Community art projects to combat/deter graffiti
- Environmental awareness litter themed workshops.



<b>Target Group:</b>	Local Community Groups, Youth Groups		
<b>Budget:</b>	€10,000 - €15,000	<b>Closing Date:</b>	23rd May 2025
<b>Grant Amount:</b>	€150- €1500		
<b>Match Funding:</b>	None		
<b>Contact:</b>	<b>Margaret Whelan Environment Section, Kilkenny County Council</b> Tel: 056-7794027 Email: Margaret.whelan@kilkennycoco.ie		



[www.kilkennycoco.ie/eng/Services/Environment/Environment\\_Grants/](http://www.kilkennycoco.ie/eng/Services/Environment/Environment_Grants/)

# Zero Waste

## general



- Non-compostable disposable cups
- Wet wipes
- Soiled aluminium foil & containers
- Broken crockery
- no food  
no recyclables  
no batteries**
- Floor sweepings
- Contaminated items
- Disposable face masks
- Disposable gloves



## recycle



- Plastic bottles & containers
- Plastic tubs & trays
- Soft plastics
- Cans & tins
- clean, dry & loose & no batteries**
- Aluminium cans
- Cardboard
- Cartons
- Paper & magazines

## food



- Raw food
- Cooked food
- Unwanted leftovers
- Paper towels & napkins
- no glass  
no plastics  
no batteries  
no metals**
- Tea bags & coffee grinds
- Compostable bags  
Certified to EN13432
- Compostable packaging  
Certified to EN13432
- Greenery & flowers





# Please consider the environment when sourcing goods and services.

## Energy

- Set yourself a target to reduce the energy use in your community buildings and in your own home.
- Consider installing energy saving initiatives and invest in renewable energy sources.
- If you are embarking on a project is your contractor using sustainable products that have a reduced environmental impact?

## Waste

- Can you recycle your waste (food waste to garden compost)
- Donate your unwanted items to a new home (i.e community library, charity shop)

## Travel

- Consider car-pooling with your neighbours or with others in your community or can you travel by bike or walk instead? These simple changes can have positive effects on your personal health and result in less harmful pollution in the environment and it also

reduces reliance on fossil fuels.

- If you are buying goods or service, please try and shop local to cut down on unnecessary carbon emissions.

## Water

- Can you install a water refill station in your local area which would cut down on using single use plastic bottles and reduce littering
- Consider installing a rainwater harvesting butt in your garden or at your local community building.

## Food

- Is it possible to grow some of your own food or source your food from local, sustainable suppliers.
- Can you choose a plant based food option?

## Biodiversity

- Think about introducing an area in your garden or community to sow pollinator friendly plants, create a biodiversity trail or sow native hedging and trees which will provide a natural habitat for wildlife and sequester carbon.

## All these small steps can result in positive Climate Action.

Kilkenny County Council is committed to a greener future and Green Public Procurement is high on the agenda of our Climate Action Plan.

## Join the Kilkenny Going Green Network

- Join our Kilkenny Going Green network to hear about the latest grants, advice, and supports, and to follow Kilkenny County Council's climate action journey.
- If you have any queries, or would like to tell us what you are doing for Climate Action in Kilkenny please contact the Climate Action Office, Kilkenny County Council

**Phone:** 056-7794342;

**Email:** [climate@kilkennycoco.ie](mailto:climate@kilkennycoco.ie);

Follow us on Instagram @Kilkennycoco and Kilkenny County Council on Facebook.

**Website:** <https://kilkennycoco.ie/eng/services/environment/climate-action/>



  
**Kilkenny**  
**Going Green**



# Artists Connect Bursary

**Funding Authority:** *Kilkenny County Council*  
**Application Process:** *Independent panel appointed by Arts Officer*

## ELIGIBLE WORKS

*Kilkenny Arts Office Artists Connect Bursary aims to enable artists to create opportunities for themselves and other artists to come together to share knowledge, skills and build relationships. The bursary will support artists to both initiate and continue to build relationships and develop networks. This bursary is a chance for artists to tailor networking events to their needs and the needs of others in the arts community. Through greater connection with others, artists will feel supported, connected and these events also have the potential to develop partnerships, collaborations and new opportunities.*



<b>Target Group:</b>	Artists of all artforms		
<b>Grant Amount:</b>	€500-€1,000	<b>Closing Date:</b>	19th February 2025 at 4pm
<b>Match Funding:</b>	N/A		
<b>Contact:</b>	Deirdre Southey, Kilkenny County Council Arts Office Tel: 056-7794547 Email: Deirdre.southey@kilkennycoco.ie		



we are  
**Literature**



we are  
**Music**



we are  
**Visual Arts**



we are  
**Performing Arts**

# Artists Residency Bursary (Kilkenny)

**Funding Authority:** *Kilkenny County Council*  
**Application Process:** *Independent panel appointed by Arts Officer*

## ELIGIBLE WORKS

*Artists of all artforms, based in Kilkenny administrative area who can show significant achievement in their chosen field. This bursary offers artists the opportunity to spend one- two weeks at a chosen artists residency centre in the Republic of Ireland. Providing time to work intensively on a 'project' in a dedicated environment.*



### Target Group:

Individual artists of all art forms, to enable them to research/develop existing or new projects.

### Budget:

1-2 weeks residency

### Closing Date:

27th January 2025

### Match Funding:

N/A

### Contact:

**Deirdre Southey, Kilkenny County Council Arts Office**

**Tel:** 056-7794547

**Email:**

Deirdre.southey@kilkennycoco.ie

[www.kilkennycoco.ie/eng/Services/Arts/Grants\\_Awards](http://www.kilkennycoco.ie/eng/Services/Arts/Grants_Awards)



## Arts Act Grant

**Funding Authority:** *Kilkenny County Council*  
**Application Process:** *Independent panel appointed by Arts Officer*

### ELIGIBLE WORKS

*The Arts Act Grant is for organisations or individuals based in the Kilkenny administrative area involved in activities which promote, develop the knowledge, appreciation and practice of the arts in Kilkenny.*

**The following are eligible to apply:**

1. Groups and Organisations promoting the arts
2. Individual Artists, Kilkenny County Council will consider applications from practicing artists living in Kilkenny to enable them to pursue their practice and to develop within their chosen discipline, including professional development and project awards.

<b>Target Group:</b>	Arts Act Grant- Organisations/ Community groups for the purpose of stimulating public interest in the Arts & also Individuals to enable them to pursue their practices.		
<b>Budget:</b>	€25,000	<b>Closing Date:</b>	27th January 2025
<b>Grant Amount:</b>	€200-€1000		
<b>Match Funding:</b>	Match funding requirement (for beneficiary) is minimum 20%		
<b>Contact:</b>	<b>Deirdre Southey, Kilkenny County Council Arts Office</b> <b>Tel:</b> 056-7794547 <b>Email:</b> Deirdre.southey@kilkennycoco.ie		



[www.kilkennycoco.ie/eng/Services/Arts/Grants\\_Awards](http://www.kilkennycoco.ie/eng/Services/Arts/Grants_Awards)



# Built Heritage Investment Scheme (BHIS) 2025

**Funding Authority:** *Kilkenny County Council*

**Application Process:** *Internal Assessment & Decision*

## ELIGIBLE WORKS

*The aim of the Built Heritage Investment Scheme is to investment in a significant number of small-scale, labour-intensive conservation projects throughout the county and to support the employment of conservation professionals, craftspeople and tradespersons in the repair of the historic built environment. Grant funding between €2,500 and €50,000.*

**This funding stream has closed for 2025.** For more details on this grant in 2026, please check the Building Conservation in summer 2025 for more information <https://kilkennycoco.ie/eng/services/planning/conservation/conservation-grants/>



<b>Target Group:</b>	Small-scale, labour-intensive conservation projects throughout the county and to support the employment of conservation professionals, crafts people and trades persons in the repair of the historic built environment.		
<b>Budget:</b>	€156,800	<b>Closing Date:</b>	Applications open June – September 2025
<b>Grant Amount:</b>	€2,500-€50,000		
<b>Match Funding:</b>	50% match funding		
<b>Contact:</b>	Kilkenny County Council, Architectural Conservation Officer, Planning Department Tel: 056-7794010 Email: <a href="mailto:planning@kilkennycoco.ie">planning@kilkennycoco.ie</a>		

# CLÁR Programme

**Funding Authority:** Department of Rural and Community Development

**Application Process:** Applications to Kilkenny County Council for Measure 1. Decisions are made by the Department of Rural & Community Development.

## ELIGIBLE WORKS

The CLÁR scheme is a targeted investment programme towards identified CLÁR areas in County Kilkenny. The aim of CLÁR is to support the sustainable development of identified CLÁR areas with the aim of attracting people to live and work there.

**Examples:** Support for Community Safety Measures, Play Areas (including Multi Use Games Area), Community Walkways and Sporting Facilities.



<b>Target Group:</b>	The targets groups are Community Groups, Community Facilities and Sporting Organisations in identified CLÁR areas in County Kilkenny.
<b>Match Funding:</b>	Approximately 10%
<b>Contact:</b>	<b>Kilkenny County Council Community Development</b> Tel: 056-7794920 Email: <a href="mailto:community@kilkennycoco.ie">community@kilkennycoco.ie</a>

[www.kilkennycoco.ie/eng/Services/Community\\_Culture/Community-Cultural-Facilities-Capital-Scheme-CCFCS-/](http://www.kilkennycoco.ie/eng/Services/Community_Culture/Community-Cultural-Facilities-Capital-Scheme-CCFCS-/)



# Commercial Premises Paint Scheme

**Funding Authority:** *Kilkenny County Council*  
**Application Process:** *Application Forms, Internal Assessment & Decision*

## ELIGIBLE WORKS

*Assist with the cost of painting the front façade of buildings and traditional signage throughout the county.*



<b>Target Group:</b>	Commercial Premises street facing facade.		
<b>Budget:</b>	€10,000	<b>Closing Date:</b>	2nd May 2025
<b>Grant Amount:</b>	€450 max		
<b>Match Funding:</b>	50% cost of works or max grant €450		
<b>Contact:</b>	<b>Kilkenny County Council                  Community Development</b> Tel: 056-7794920 Email: <a href="mailto:community@kilkennycoco.ie">community@kilkennycoco.ie</a>		



[https://www.kilkennycoco.ie/eng/Services/Community\\_Culture/Grants/Streetscape-Paint-Scheme.html](https://www.kilkennycoco.ie/eng/Services/Community_Culture/Grants/Streetscape-Paint-Scheme.html)



# Community & Cultural Facilities Capital Scheme

**Funding Authority:** *Kilkenny County Council*  
**Application Process:** *Verbal expression of interest to Council Official followed by application where appropriate. Internal Evaluation Process.*

## ELIGIBLE WORKS

*The overall objective of this scheme is to respond to the need for better community, recreational and cultural facilities for community groups through the provision of a capital grant.*

*The scheme is open to groups operating within the Community Sector who have a recognised legal structure, operate on a 'not for profit' basis, demonstrate a policy of inclusion and demonstrate the capacity to deliver the project and thereafter to manage and operate the proposed facilities.*

**Examples:** Examples of projects eligible for support include the development of open spaces, walkways and parklands, play areas, broad based recreational facilities, community radio, community hall upgrades, community sensory gardens, arts projects and projects that conserve the built and natural heritage of the county.



<b>Target Group:</b>	Local Development Groups		
<b>Budget:</b>	€250,000	<b>Closing Date:</b>	TBA
<b>Match Funding:</b>	75% of costs (€9,000 min – max of €45,000). The grant beneficiary will have to provide the remaining 25% match funding.		
<b>Contact:</b>	<b>Kilkenny County Council                  Community Development</b> Tel: 056-7794920 Email: <a href="mailto:community@kilkennycoco.ie">community@kilkennycoco.ie</a>		

# Community Climate Action Programme

**Funding Authority:** *Department of Environment, Climate & Communications*  
**Application Process:** *Submission to Department for Approval*

## ELIGIBLE WORKS

*The overall objective of this Programme is to support and empower communities, to shape and build low carbon, sustainable communities in a coherent way to contribute to national climate and energy targets.*

*Kilkenny County Council are awaiting clarification from the Department of Environment, Climate and Communications on Phase 2 (2025) of this programme.*

*If you are interested in submitting a project please contact Claire Prendergast, A/Community Climate Action Officer, Kilkenny County Council on 056 7794112 or email [claire.prendergast@kilkennycoco.ie](mailto:claire.prendergast@kilkennycoco.ie).*

*Please see <https://arcg.is/0XD4C41> for details of the current 22 Climate Action Projects that are currently being undertaken by communities across Kilkenny in Phase 1 (2024) of this programme.*

**Examples:** There are grants available under categories Energy, Travel, Food & Waste, Shopping & Recycling, Local Climate & Environmental Action.

<b>Target Group:</b>	The target group is Kilkenny Community Groups. There are two strands of funding.
<b>Contact:</b>	<b>Breda Maher and Claire Prendergast, Kilkenny County Council, Community Climate Action Officer</b> Tel: 056-7794112 Email: <a href="mailto:breda.maher@kilkennycoco.ie">breda.maher@kilkennycoco.ie</a> <a href="mailto:Claire.prendergast@kilkennycoco.ie">Claire.prendergast@kilkennycoco.ie</a>





# How can you help meet Climate Action targets?



In order to meet climate action targets, we need everyone in County Kilkenny to play an active role. Many people want to help, but don't know what to do or where to start. **Below are some suggestions for actions we can all take which will help to reduce our carbon footprints at home, work, and within the local community.**

Did you know that hedges are really important in tackling climate change? They store carbon, slow down flash-floods and provide a home for nature. If you're trimming your hedges, make sure to do it before the end of February when the birds begin to build their nests and lay eggs.



At around 40%, transport is the largest energy user in Ireland. Believe it or not, private cars account for about one fifth of all our energy use.



## No Mow May

Taking part couldn't be easier, just lock away the lawnmower for the month of May and wait and see what grows. You might be surprised by what appears over a few short weeks. You might see plants like Dandelions, Red and White Clover and birds-foot trefoil, all of which are excellent sources of food for pollinating insects, as well as bees, butterflies, and birds, all attracted by the feast on your lawn!



## Reduce, Reuse, Recycle

Producing clothes uses a lot of natural resources and creates greenhouse gas emissions which are responsible for climate change. 8-10% of the global Greenhouse Gas Emissions are produced by the clothing and textile industry. Buy less, buy good, shop from second hand stores where possible. You can also repair your clothes, buy natural fabrics instead of synthetic fibres and think before you buy.



Turn the thermostat down to 19°C in your living and working areas. The temperature in hallways and bedrooms should be cooler, ideally between 15-18°C. You can reduce your heating bill up to 10% by lowering your room temperature by just one degree.



Support nature by planting native trees, hedges and pollinator-friendly plants in your garden or community. Healthy habitats will absorb carbon and provide green solutions to the climate crisis. Avoid using pesticides where possible.



# How can you help meet Climate Action targets?



In order to meet climate action targets, we need everyone in County Kilkenny to play an active role. Many people want to help, but don't know what to do or where to start. **Below are some suggestions for actions we can all take which will help to reduce our carbon footprints at home, work, and within the local community.**

The number one thing you can do to reduce your transport emissions is to walk or cycle where possible, or use public transport. The most energy efficient journey is the one you do not make in the car.



If you need to drive, then driving style can also impact on energy use.

Did you know that driving just 10kph slower can save you up to 18% in fuel.

Turning off all non-essential equipment out of business hours can save up to 60% of office equipment energy costs.



Use the eco setting on all appliances.

**By using the power-saving mode on a photocopier can save up to 92% of its typical energy use**

When purchasing new equipment check the energy efficiency rating label. Equipment rated A will use less energy and cost less to run.

Switch to LED bulbs and fittings, as they use considerably less energy while supplying the same level of light.



Heat it when you need it, use timers or smart heating controls to fit your routines.

Did you know that the biggest energy users in your home are the shower, cooker, tumble dryer, washing machine and kettle, use them sensibly.

Use an energy monitor to find out how much energy you are using in real time.



## Other Climate Action Grants

### CLIMATE ACTION GRANTS

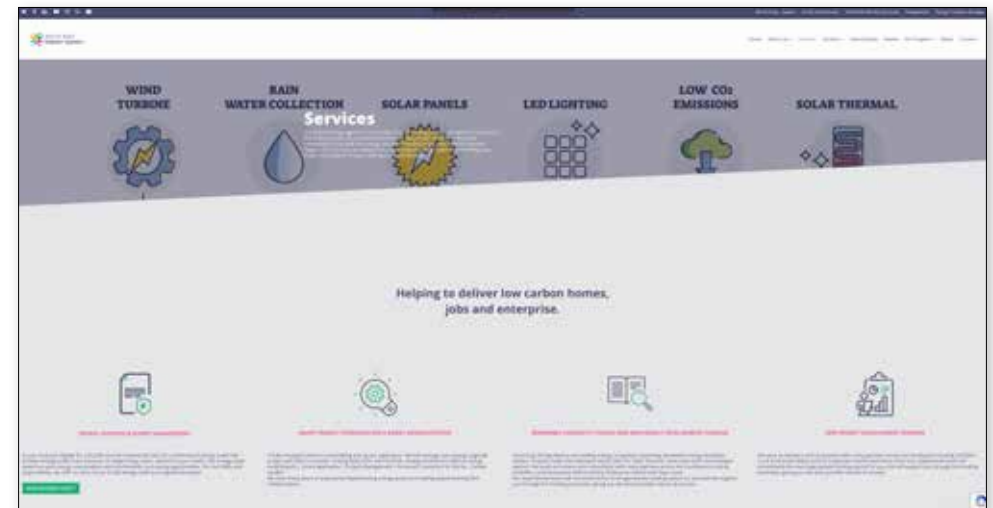
There are various grants available to help communities, individuals, businesses, artists, and sports clubs to take positive action on climate sustainable projects. These grants are available through South East Energy Agency Grant and Green Clubs GAA. Please note that new grants are announced regularly and existing grants updated, so please contact the relevant grant giving organisation to confirm the most up-to-date details.



## South East Energy Agency Grant Advice

*The South East Energy Agency (SEEA), based in Kilkenny, is a “One Stop Shop” for the South East Region whose team of energy experts provide advice on grants, and reducing energy in your home, community or business. They act as an intermediary for a range of sectors including domestic houses, business, communities, public sector, agriculture, transport.*

*The SEEA doesn't administer grants but is a useful first port of call for information on grants. See <https://southeastenergy.ie/services/>*





## Sustainable Energy Authority of Ireland Grants

*The Sustainable Energy Authority of Ireland (SEAI) grants are available to help homeowners, business owners, communities and large industry to reduce their energy costs and greenhouse emissions.*

### Homes

*There are now more ways than ever to make your home warmer and more energy efficient. SEAI grants include (i) complete home energy upgrade, (ii) individual grants, and (iii) fully funded energy upgrades for homeowners in receipt of certain benefits. For more information see <https://www.seai.ie/grants/home-energy-grants/>*

### Electric Vehicles

*SEAI electric vehicle grants make it more affordable to switch to an Electric Vehicle (either private or commercial vehicle). They have grants for (i) EV's, and (ii) EV Charging Points (home, public, apartment). <https://www.seai.ie/grants/electric-vehicle-grants/>*

### Communities

*The SEAI Community Grant supports energy efficiency community projects through capital funding, partnerships, and technical support. This includes grants for Building Fabric Upgrades; Technology and System upgrades; Integration of Control Systems; Integration of renewable energy sources; Domestic Combined Fabric Upgrade; Single Building Demonstration projects <https://www.seai.ie/grants/community-grants/overview/>*

## Start a Sustainable Energy Community

*Start an energy community and work together to achieve a sustainable energy goal/plan. Sustainable Energy Communities can avail of a free mentor service and grant funding to help achieve community energy goals <https://www.seai.ie/community-energy/sustainable-energy-communities/>*

## Renewable Electricity Support Scheme

*The Renewable Electricity Support Scheme (RESS) promotes investment in renewable energy generation in Ireland. <https://www.seai.ie/community-energy/ress/overview/>*

## Business Grants & Supports

*Do you want to cut down on energy costs or meet energy saving targets? The SEAI business grants can help make significant savings. <https://www.seai.ie/business-and-public-sector/business-grants-and-supports/>*



SUSTAINABLE  
DEVELOPMENT  
GOALS

- ENERGY • WATER • WASTE
- BIODIVERSITY • TRANSPORT

## GAA Green Clubs Programme

*The GAA Green Clubs programme supports GAA clubs to take simple and effective sustainability action in their grounds and activities. Closing date is Sunday January 29th. These clubs will be eligible for seed funding and support to implement sustainability action*

<https://greenclubs.gaa.ie/>

*The free GAA Green Club Programme Toolkit is available to all GAA clubs. It contains practical advice and guidance on Energy, Water, Waste, Biodiversity and Travel & Transport, tailored for GAA clubs, as well as inspiring case studies from clubs from across the island of Ireland.*

<https://learning.gaa.ie/greenclub>







## Our Targets

As part of Climate Action Plan, we are working towards a 51% reduction in greenhouse gas emissions and a 50% improvement in energy efficiency.



  
**Kilkenny**  
Going Green



# How can you help meet Climate Action targets?

In order to meet climate targets, we need everyone in County Kilkenny to play an active role. Many people want to help, but don't know what to do or where to start.

Below are suggestions for actions we can all take which will help to reduce our carbon footprints at home, work, community:



Join a Sustainable Energy Community and avail of a FREE support programme to learn how to make energy improvements and secure funding for your community.

<https://southeastenergy.ie/sectors/community-groups/>



Encourage your GAA club to join the GAA Green Clubs programme.

See [Green Clubs Get Involved \(gaa.ie\)](http://GreenClubsGetInvolved.gaa.ie)



Reduce your carbon footprint by using public transport, walking and cycling as much as possible. Participate in developing a new Sustainable Urban Mobility Plan for Kilkenny City.

[https://kilkennycoco.ie/eng/services/community\\_culture/kilkennytravel-and-transport/](https://kilkennycoco.ie/eng/services/community_culture/kilkennytravel-and-transport/)



Reduce your energy use and improve energy efficiency in your home.

<https://www.seai.ie/publications/SEAI-ReduceYourUse-Booklet.pdf>

Reduce food waste in your home.

<https://stopfoodwaste.ie/>



Use your money and purchasing power to buy sustainable products and services where possible. This helps to support the circular economy and avoids producing unnecessary waste and energy. Avail of grants to reduce the carbon footprint of your home, community or business.



Support nature by planting trees, hedges and pollinator-friendly plants in your garden or community. Healthy habitats will absorb carbon and provide green solutions to the climate crisis. Avoid using pesticides where possible.



# Community Events Grant Scheme

**Funding Authority:** *Kilkenny County Council*  
**Application Process:** *Application Form, Internal Evaluation*

## ELIGIBLE WORKS

*The main purpose of the Community Events Grants scheme is to provide financial assistance to community event organisers with the development, promotion and the running of small-scale community events organised by local not-for-profit voluntary groups and organisations and includes intercultural events and events that recognise and celebrate diversity in Kilkenny.*



<b>Target Group:</b>	Community Events		
<b>Grant Amount:</b>	Grants between €100-€1,000	<b>Closing Date:</b>	14th February 2025
<b>Match Funding:</b>	NA		
<b>Contact:</b>	<p>Completed applications, together with supporting documentation, must be submitted by post or email to:  <b>Diane Seale, Community Department, Kilkenny County Council, Patricks Court, Patricks Street, Kilkenny, R95 N28F</b>  <b>Tel: 056-7794289</b>  <b>Email: <a href="mailto:diane.seale@kilkennycoco.ie">diane.seale@kilkennycoco.ie</a></b></p>		



# Community Heritage Grant 2025

**Funding Authority:** *Heritage Council*  
**Application Process:** *Contact the Heritage Council*

## ELIGIBLE WORKS

*The aim of this scheme is to support projects that improve access and inclusion to heritage sites; that apply good heritage practice to the management of places, collections, habitats and species, objects (including buildings and monuments) or intangible heritage. The scheme also supports the purchase of essential equipment. This scheme is intended to enable communities and non-governmental organisations (NGOs) to continue their work in this area or to start new initiatives. More information on eligibility requirements can be found on [www.heritagecouncil.ie](http://www.heritagecouncil.ie)*



<b>Target Group:</b>	Voluntary and community groups, for example, parish councils, tidy towns groups, local action groups etc.; Non-governmental organisations (NGOs) including not for profit trusts; Museum Standards Programme for Ireland (MSPI) participants (non-governmental only); Adopt a Monument Programme participants.		
<b>Budget:</b>	TBC (average offers tend to be in the €500-€25000 range)	<b>Closing Date:</b>	TBC (for updates see <a href="http://www.heritagecouncil.ie">www.heritagecouncil.ie</a> )
<b>Match Funding:</b>	NA		
<b>Contact:</b>	The Heritage Council, Kilkenny; <b>Email:</b> <a href="mailto:mail@heritagecouncil.ie">mail@heritagecouncil.ie</a> ; <b>Tel:</b> 056 777 0777		

<https://www.heritagecouncil.ie/funding/funding-schemes>



# Community Involvement in Roadworks Scheme

**Funding Authority:** *Kilkenny County Council*  
**Application Process:** *Application Form, Internal Evaluation  
 & Submission to the Department Transport Tourism and Sport.*

## ELIGIBLE WORKS

*The Community Involvement Scheme (CIS) is an opportunity for communities to have road repair work carried out at relatively modest cost on local roads and cul-de-sacs that are included on the Council's main roadworks programme. Local communities or individuals can identify qualifying improvement works on their local public roads. Subject to a community financial contribution of 15% of the cost of the works, the balance of the cost of the works may be funded by a specific grant from the Department of Transport.*



<b>Target Group:</b>	Private Residents and Land Owners
<b>Match Funding:</b>	15%-30% (certain criteria applies)
<b>Contact:</b>	<b>Municipal District Castlecomer Castlecomer Area Office.</b> Tel: 056-7794450
	<b>Municipal District Kilkenny City</b> Tel: 056- 7794516
	<b>Municipal District Callan/Thomastown</b> <b>Callan Area Office</b> Tel: 056-7794320
	<b>Thomastown Area Office</b> Tel: 056-7794340
	<b>Municipal District Piltown, Ferrybank Area Office.</b> Tel: 056-7794270

# Community Monuments Fund 2025

## ELIGIBLE WORKS

*This funding is prioritised for the care, conservation, maintenance, protection and promotion of archaeological monuments. The core aims of the Fund are the conservation, maintenance, protection and presentation of archaeological monuments.*

*It will: enable conservation works to be carried out on monuments which are deemed to be significant and in need of urgent support; build resilience in our monuments to enable them to withstand the effects of climate change; encourage access to monuments and improve their presentation.*



*Stream 1: Essential repairs and capital works for the conservation and repair of archaeological monuments*

*Stream 2: Development of Conservation Management Plans/ Reports aimed at identifying measures for conservation of archaeological monuments and improving public access.*

*Stream 3: Enhancement of access infrastructure, interpretation projects and small scale emergency conservation works at archaeological monuments.*

<b>Target Group:</b>		Local Authorities, private owners and custodians, and community groups	
<b>Budget:</b>	Funding Minimum €1,000- €100,000	<b>Closing Date:</b>	31st January 2025
<b>Match Funding:</b>		None	
<b>Contact:</b>		<b>Regina Fitzpatrick</b> <b>Heritage Officer</b> <b>Kilkenny County Council</b> <b>Tel: 056-7794923</b> <b>Email: <a href="mailto:heritage@kilkennycoco.ie">heritage@kilkennycoco.ie</a></b> <b>Tel: 056 779 4923</b>	



# Community Water Development Fund

**Funding Authority:** *Local Authority Waters Programme*  
**Application Process:** *Contact Local Community Water Officer before submitting application*



## ELIGIBLE WORKS

*Groups may apply for funding through the Community Water Development Fund. LAWPRO support three funding schemes now;*

**LAWPRO Open Call** *An open call for Communities for water protection project 2025 is open and will close on 15th November 2024 (awards up €50,000)*

**Home | Online Consultation Portal of the Waters and Communities Office** *Awards of up to 100% of eligible costs*

*A Catchment Support Fund aimed at organisations and costs (Strand 1 and 2) due to open in December 2024*

*A small grants scheme which is open all year round, €100-€5000 for small events*

**LAWPRO Small Grants and Events Scheme December 2024 | Online Consultation Portal of the Waters and Communities Office**

*For guidelines and online applications process please visit [lawwaters.ie](http://lawwaters.ie) or contact your local CWO [aphelan@lawwaters.ie](mailto:aphelan@lawwaters.ie)*

<b>Target Group:</b>	This scheme aims to support communities in progressing water based projects and initiatives. Not for profit Community & Voluntary groups, Rural & Urban Networks, Environmental NGO's, Clubs & Associations.
<b>Match Funding:</b>	NA
<b>Online Platform:</b>	Complete via online <a href="http://www.lawwaters.ie">www.lawwaters.ie</a> Grant Opening Autumn 2025
<b>Contact:</b>	<b>Ann Phelan,</b> <b>Community Water Officer</b> Tel: 085 808 4067
Application Form and Guidance Notes in respect of the Community Water Development Fund 2025 are available to download at <a href="http://www.lawwaters.ie">www.lawwaters.ie</a> or by contacting the Waters and Communities Office at 076-1065260 or <a href="mailto:info@lawwaters.ie">info@lawwaters.ie</a>	

# Creative Ireland & Cruinniú na nÓg Grant Scheme 2025

**Funding Authority:** *Kilkenny County Council*  
**Application Process:** *Application process/ Internal Assessment*

## ELIGIBLE WORKS

*This grant scheme aims to provide financial support to local community groups and individuals, artistic and creative practitioners, event organisers and those involved in creative, cultural and heritage activities and projects, in order to encourage cultural participation throughout Kilkenny and support the delivery of the Creative Ireland Kilkenny Culture and Creativity Strategy 2023-2027.*

*This scheme also includes funding for projects which will help deliver the Cruinniú na nÓg programme in Kilkenny. Cruinniú na nÓg (June 2025 is the national day of free creativity activity for children and young people up to 18 years of age, and is part of the national Creative Ireland Programme. Applicants for Night Time events are welcome.*

*The scheme is co-funded by the Creative Ireland Programme, and co-ordinated by the Kilkenny County Council Culture Team.*



<b>Target Group:</b>		Local and community groups and individuals, artistic and creative practitioners, event organisers and those involved in creative, cultural and heritage activities and projects.	
<b>Budget:</b>	Creative Ireland €1,000 - €3,000 Cruinniú na nÓg €500 - €3,000	<b>Closing Date:</b>	Cruinniú na nÓg 14th February Creative Ireland 21st February 2025
<b>Match Funding:</b>	NA		
<b>Contact:</b>	Majella Keating, Arts Department, Kilkenny County Council E: creativeireland@kilkennycoco.ie Tel :056-7794338		

<https://www.creativeireland.gov.iel/en/creative-communities/>



# Estate Management Grant

**Funding Authority:** *Kilkenny County Council*  
**Application Process:** *Internal Assessment*

## ELIGIBLE WORKS

*Open to community committees in local authority estates to fund projects which promote estate management.*

*To qualify for assistance under the Estate Management Grant Scheme, applications must be submitted on behalf of an established County Council residents association and proposed projects/activities must be deemed to promote the interests of estate management in the community.*

**Examples:** Equipment purchase & equipment maintenance, clearing of Derelict sites within Estates, Planting, Landscaping, Equipment purchase.



<b>Target Group:</b>		Resident & Community Groups in Kilkenny County Council Housing Estates	
<b>Grant Amount:</b>	Avg. €600-€700	<b>Closing Date:</b>	30th May 2025
<b>Match Funding:</b>		None	
<b>Contact:</b>		Housing Department Kilkenny County Council Johns Green House, Kilkenny Email: <a href="mailto:tenancymanagement@kilkennycoco.ie">tenancymanagement@kilkennycoco.ie</a> Tel: 056-7794900	

# Festival Grants Scheme

**Funding Authority:** *Kilkenny County Council*  
**Application Process:** *Application form. Internal assessment, proposed allocation sent to Corporate Policy Group (CPG). Final proposed allocation sent to Elected Members for approval and adoption.*

## ELIGIBLE WORKS

*Kilkenny County Council will provide funding for festival organisers to aid with the development and promotion of festivals with a significant tourism impact.*

*The main purpose of the Festival Support Grants scheme is to support festivals which drive tourism in Kilkenny, underpinning Kilkenny County Council's Tourism Strategy and improving the visitor experience in Kilkenny city and county.*

**Examples:** The Kilkenny Cat Laughs Comedy Festival, Kilkenny Roots Festival, Savour Kilkenny Food Festival, Subtitle European Film Festival, Kilkenomics, Kilkenny Animated, Tradfest.



<b>Target Group:</b>	Groups hosting festivals
<b>Contact:</b>	<b>Martina Comerford, Tourism Officer, Kilkenny County Council</b>  <b>Tel:</b> 056-7794011 <b>Email:</b> festivalgrants@kilkennycoco.ie



# Graveyard Grant Scheme

**Funding Authority:** *Kilkenny County Council*  
**Application Process:** *Application form & Internal Assessment*

## ELIGIBLE WORKS

*The Graveyard Grant Scheme aims to support community groups/organisations in the maintenance of graveyards and encourage best practice in graveyard management. Any recognised community group/organisation can apply.*

**Projects eligible for funding in graveyards include:**

- Graveyard maintenance, including appropriate works to help pollinators
- Graveyard recording schemes
- Heritage studies of graveyards.



<b>Target Group:</b>	Local Community Groups		
<b>Budget:</b>	€20,000	<b>Closing Date:</b>	3rd March 2025
<b>Grant Amount:</b>	€200-€600		
<b>Match Funding:</b>	None		
<b>Contact:</b>	Deirdre Trait, Kilkenny County Council Environment Section Tel: 056-7794470 Email: Deirdre.traits@kilkennycoco.ie		

[www.kilkennycoco.ie/eng/Services/Environment/Environment\\_Grants/](http://www.kilkennycoco.ie/eng/Services/Environment/Environment_Grants/)

# Heritage In Schools Programme

**Funding Authority:** *Heritage Council*  
**Application Process:** *Contact the Heritage Council*

## ELIGIBLE WORKS

*The Heritage in Schools programme provides a panel of Heritage Specialists who visit primary schools to teach children about their local heritage – from biodiversity to history and folklore.*

*Visits are hands-on and interactive and take place in the outdoor classroom where possible. The Specialist will tailor the visit to your requirements. A full or half day visit can be arranged so that the Specialist works with different groups of children throughout the visit. Group sizes are limited to 30 children.*

*A fantastic scheme for schools who would like their pupils to learn about heritage in a fun and engaging way, whilst addressing the national curriculum requirements. The programme is co-ordinated by the Heritage Council.*



<b>Target Group:</b>	Primary Schools. The scheme supports the Social, Scientific and Environmental Education (SESE) curriculum.
<b>Match Funding:</b>	<b>Required</b> –See here <a href="http://www.heritageinschools.ie/about/how-it-works">www.heritageinschools.ie/about/how-it-works</a>
<b>Contact:</b>	<b>Maria Walsh, Heritage in Schools Programme Manager, The Heritage Council</b>  <b>Tel: 056-7770777</b> <b>Email: <a href="mailto:mwalsh@heritagecouncil.ie">mwalsh@heritagecouncil.ie</a></b>



<http://www.heritageinschools.ie>



# Historic Structures Fund 2025

**Funding Authority:** *The Department of Housing, Local Government and Heritage.*

**Application Process:** *Applications sent to Kilkenny County Council for assessment, where select project forwarded to the Department for final decision.*

## ELIGIBLE WORKS

*Funding for the Historic Structures Fund (HSF) is being made available as part of Project Ireland 2040. The primary focus of the Historic Structures Fund will be on conservation and enhancement of historic structures and buildings for the broader benefit of communities and the public. Grant offer will range between €50,000 and €200,000.*

*There is a focus on larger enhancement, refurbishment or reuse projects involving heritage structure where;*

- A clear community or public benefit has been demonstrated or*
- A clear residential benefit has been demonstrated*

*Traditionally, the HSF opens in early November and closes in mid-January of the grant year. Please check the Building Conservation page for more information <https://kilkennycoco.ie/eng/services/planning/conservation/conservation-grants/>*



### Target Group:

Small-scale, labour-intensive conservation projects throughout the county and to support the employment of conservation professionals, craftspeople and tradespersons in the repair of the historic built environment.

### Match Funding:

Varies  
\*Grant allocation may vary annually

### Contact:

**Kilkenny County Council,  
Architectural Conservation Officer,  
Planning Department  
Tel: 056-7794010  
Email: [planning@kilkennycoco.ie](mailto:planning@kilkennycoco.ie)**

<https://www.kilkennycoco.ie/eng/services/planning/conservation/conservation-grants/>

# Historic Thatched Buildings 2025

**Funding Authority:** *Kilkenny County Council*  
**Application Process:** *Application*

## ELIGIBLE WORKS

*A ring-fenced thatching grant has been launched to assist owners of thatch buildings with repairs. A total of €23,916.50 is available for this fund, while funding may be up to a maximum of 80% the cost of the project.*



<b>Target Group:</b>	Owners of Thatch Buildings		
<b>Budget:</b>	€23,916	<b>Closing Date:</b>	17th January 2025
<b>Match Funding:</b>	20%		
<b>Contact:</b>	Architectural Conservation Officer, Planning Department, Tel: 056-7794010 Email: <a href="mailto:planning@kilkennycoco.ie">planning@kilkennycoco.ie</a>		

<https://kilkennycoco.ie/eng/services/planning/conservation/conservation-grants/nbhs-htb-2025-circular%20thatched%20buildings.pdf>

<https://kilkennycoco.ie/eng/services/planning/conservation/conservation-grants/nbhs-htb-grant-2025-application-form-a.docx>



# Housing Grants

**Funding Authority:** *Kilkenny County Council*  
**Application Process:** *Internal Assessment*

## ELIGIBLE WORKS

### Housing Adaption Grant for Persons with a Disability

*This scheme is available to assist applicants to carry out renovations to accommodate persons with a disability who is a member of the household.*

**Examples of works:** *Level Access Bathroom adaptations, adaptations to facilitate wheelchair access, ramps, curved stairlifts.*

### Mobility Aid Grant

*This scheme is available to cover small scale works to address mobility issues.*

**Examples of works:** *Grab rails, access ramps, stairlifts.*

### Housing Aid for Elderly

*This scheme is available to assist older people (66 years and over) living in their own homes to carry out necessary improvement works.*

**Examples of works:** *Repair or replacement of roof, upgrade of electrical works, repairs to central heating, replacement of single glazed windows and doors.*



<b>Target Group:</b>		Housing Adaptation Grants are available to private homeowners and local authority tenants. Mobility Grants are available to private homeowners. Housing Aid Grants are available to private homeowners.	
<b>Grant Amount:</b>	Housing Adaptation Grant (max €40,000) Housing Aid for Elderly (max €10,700) Mobility Aid Grant (max €8,000)	<b>Closing Date:</b>	None
<b>Match Funding:</b>		Income assessed Private home owners	
<b>Contact:</b>		<b>Housing Grants Dept, Kilkenny County Council, Tel: 056-7794930</b> <b>Email:</b> Privatehousinggrants@kilkennycoco.ie New application form for housing grants is available at <a href="#">application-form-housing-adaptation-grants-for-older-people-and-disabled-people-2024.pdf</a>	

# Kilkenny Recreation and Sports Partnership (KRSP)

**Funding Authority:** *Kilkenny Recreation and Sports Partnership*

**Application Process:** *Application form online through our website [www.krsp.ie](http://www.krsp.ie)*

## ELIGIBLE WORKS

Grants are available for the following streams:

- 1. Club Development Grant** – *This fund aims to encourage the set-up of new clubs and assist existing clubs in their development to increase participation in their sport. Priority will be given to minority sports and low participation groups/target groups identified by KRSP.*
- 2. Volunteer Support Scheme** – *KRSP will support local sports clubs to train and upskill their volunteers by means of providing funds for volunteer coaches, leaders and committee members to attend certified training and education courses that will benefit the club to increase participation.*
- 3. Women in Sport Support Programme** – *designed to enable clubs and organisations to develop programmes that specifically targets and support women's participation in sport and physical activity.*



<b>Target Group:</b>	Sport Clubs affiliated to a National Governing Body of Sport and Community Groups and organisations (differs between funding programmes).		
<b>Budget:</b>	Varies depending on funding programme.	<b>Closing Date:</b>	Varies depending on funding programme. Information on when the grants are open can be found on our social media or website: <a href="http://www.krsp.ie">www.krsp.ie</a>
<b>Match Funding:</b>	No		
<b>Contact:</b>	CSDO, Kilkenny Recreation and Sports Partnership, 5 Dean Street, Kilkenny Tel: 056-7794991 Email: <a href="mailto:info@krsp.ie">info@krsp.ie</a>		

[www.krsp.ie](http://www.krsp.ie)



## Local Enterprise Office

**Funding Authority:** *Local Enterprise Office Kilkenny, Kilkenny County Council*

**Application Process:** *Formal Application Process for Grant Support Schemes*

### ELIGIBLE WORKS

**ARE YOU IN BUSINESS OR THINKING ABOUT SETTING UP A BUSINESS?**

Local Enterprise Office Kilkenny provide services to new and established businesses in county Kilkenny. These include:

- *Business Information, Signposting and Advice*
- *Enterprise Development Training including Start Your Own Business Courses*
- *One-to-One Business Specific Mentoring*
- *Business Expansion Services including Management Development Training and LEAN, Digital and Sustainability supports.*
- *Direct Financial Assistance\**

Where eligibility criteria are met, the Local Enterprise Office Kilkenny offers a range of financial supports to assist the start-up, and expansion of small businesses in the manufacturing and export services sectors:

- *Energy Efficiency Grant*
- *Priming Grant (for business trading less than 18 months)*
- *Business Expansion Grants (for businesses trading greater than 18 months)*
- *Feasibility Study/Innovation Grants*
- *Technical Assistance for Micro-Exporters*
- *Microfinance Ireland Loan Scheme*
- *Trading Online Voucher Scheme – aimed at micro-enterprises and grow digital voucher*

<b>Target Group:</b>	Entrepreneurs & Small Business Owners (Businesses with 50 employees or less)
<b>Match Funding:</b>	50% requirement for grant aid schemes
<b>Contact:</b>	Local Enterprise Office, Kilkenny County Council, Tel: 056-7752662 Email: <a href="mailto:info@leo.kilkennycoco.ie">info@leo.kilkennycoco.ie</a>

<https://www.localenterprise.ie/kilkenny>

## Energy Efficiency Grant

**Funding Authority:** *Local Enterprise Office Kilkenny, Kilkenny County Council*

**Application Process:** *Formal Application Process for Grant Support Schemes*

### ELIGIBLE WORKS

More efficient equipment and technology can reap dividends for your business. Improving energy efficiency and reducing waste can make a big impact on your bottom line. With our Energy Efficiency Grant you can access grants of 75% of your costs for newer, more efficient equipment up to €10,000. Contact your Local Enterprise Office today.

#### Eligible Criteria:

- *Start the process - talk to us about starting Green for Business.*
- *Are established and trading for at least 12 months, registered, and operate within the area of Kilkenny Local Enterprise Office.*
- *Businesses must have either:*
  - *A fixed premises that is commercially rateable. Businesses will be required to supply a commercial rates bill to verify this.*
  - *An establishment which is approved with the Fáilte Ireland National Quality Assurance Framework. Businesses will be required to supply approval documentation to verify this.*

<b>Target Group:</b>	Businesses established for minimum of 12 months
<b>Grant Amount:</b>	€10,000 max
<b>Match Funding:</b>	25%
<b>Contact:</b>	Local Enterprise Office, Kilkenny County Council, Tel: 056-7752662 Email: info@leo.kilkennycoco.ie

[LOCALENTERPRISE.IE/KILKENNY  
FINANCIALSUPPORTS/  
ENERGY-EFFICIENT-GRANT/](https://locaenterprise.ie/kilkenny-financial-supports/energy-efficient-grant/)



# Local Enhancement Programme 2025

**Funding Authority:** *The Local Enhancement fund is funded by the Department of Rural and Community Development (the Department) and administered by the Local Community Development Committees (LCDCs) in each Local Authority area.*

**Application Process:** *Application Form, Internal Evaluation, LCDCs are responsible for allocating funding to projects in their area as they are ideally placed to identify suitable local projects.*

## ELIGIBLE WORKS

*The Local Enhancement Programme will support groups, particularly in disadvantaged areas, to carry out necessary repairs and improvements to their facilities and purchase equipment. This is a capital funding scheme. Example of projects that may receive funding, are development/renovation of community centres, accessibility improvements, purchase of equipment, laptops or tablets, maintenance of premises including painting and repairs.*



*Christian Rock Youth Centre*



*Muckalee Tea Rooms*

<b>Target Group:</b>	Locally based community groups and voluntary groups in disadvantaged urban and rural areas, and not for profit organisations.		
<b>Budget:</b>	Grant amount varies from €1,000- €5,000	<b>Closing Date:</b>	14th February 2025
<b>Match Funding:</b>	Not required		
<b>Contact:</b>	Cora Nolan, Community Department, Kilkenny County Council, Tel: 056-7794931 Email: <a href="mailto:communitygrants@kilkennycoco.ie">communitygrants@kilkennycoco.ie</a>		

## Local Improvement Schemes (LIS)

**Funding Authority:** *Dept of Rural & Community Development*  
**Application Process:** *Application Form, internal evaluation & submission to Department*

### ELIGIBLE WORKS

*The Local Improvement Scheme (LIS) provides funding to help local authorities carry out improvement works on private and non-publicly maintained roads. Often these roads lead to a number of homes, farms or fields in use, or to lakes, rivers and beaches.*

**Eligible roads under the Local Improvement Scheme are:**

- Non-public roads that provide access to parcels of land, or provide access for harvesting purposes (including turf or seaweed) for two or more persons; or*
- Non-public roads leading to important community amenities such as graveyards, beaches, piers, mountains.*

**Non-eligible roads include:**

- Roads serving only houses or buildings occupied or used by persons not engaged in Agriculture, and*
- Roads leading to commercial enterprises.*

<b>Target Group:</b>	Private Residents/Agricultural Farmhouses
<b>Match Funding:</b>	The maximum amount that any household/landowner is required to contribute is capped at €1,200.
<b>Contact:</b>	<p><b>Municipal District Castlecomer</b> <b>Castlecomer Area Office.</b> Tel: 056-7794450</p> <p><b>Municipal District Kilkenny City,</b> <b>City Hall.</b> Tel: 056- 7794516</p> <p><b>Municipal District</b> <b>Callan/Thomastown</b></p> <p><b>Callan Area Office</b> Tel: 056-7794320</p> <p><b>Thomastown Area Office</b> Tel: 056-7794340</p> <p><b>Municipal District Piltown,</b> <b>Ferrybank Area Office.</b> Tel: 056-7794270</p>



## Outdoor Recreation Infrastructure Scheme

**Funding Authority:** Dept of Rural & Community Development

**Application Process:** Applications are prepared and submitted to DRCD by KCC for assessment, selection and approval. If Community Groups, Voluntary Recreational Providers or Social Enterprises identify a suitable project they should contact KCC to discuss proposals.

### ELIGIBLE WORKS

The Outdoor Recreation Infrastructure Scheme (ORIS) supports the development of new outdoor recreational infrastructure and the necessary repair, enhancement or promotion of existing outdoor recreation infrastructure in countryside areas across Ireland. The Scheme is funded under “Our Rural Future” which specifically prioritises the growing outdoor activity tourism sector as part of a long-term vision for a vibrant and sustainable rural Ireland.

**Examples:** The scheme supports the provision of outdoor infrastructure that is freely available to the public. The type of projects typically funded by the Scheme include trails, walkways, cycleways, mountain access routes, bridleways and open water amenities at rivers.

**Some recent projects funded in Kilkenny under the scheme include:**

The Jenkinstown Wood Walking Trail Rehabilitation Scheme, the Lacken Boardwalk Replacement Scheme, The Wood Road - River Barrow Amenity Area Pedestrian Connectivity Link in Graiguenamanagh and the Pollrone Quay Community Walk in Mooncoin.

The funding is aimed at supporting outdoor recreation tourism, a growing tourism sector internationally, which has the potential to have major economic spin off benefits for our rural towns and villages as well as improving the health and well-being of rural communities.

<b>Target Group:</b>	Community Groups, Recreational Providers or Social Enterprises
<b>Closing Date:</b>	Measure 1 & Project Development -17th January 2025 Measure 2 & 3 - 28th of February 2025
<b>Budget:</b>	<p><b>Measure 1:</b> Small Scale Repair/Development/ Promotion and Marketing (Up to €40,000);</p> <p><b>Measure 2:</b> Medium Scale Repair/Upgrade and New Trail/Amenity Development (Up to €200,000);</p> <p><b>Measure 3:</b> Strategic Large-Scale Repair/Upgrade and New Strategic Trail/Amenity Development (Up to €500,000);</p> <p>Project Development: Will provide funding for the detailed development of projects which would enable them to reach a standard for application under Measure 2 or 3 of ORIS, grant of up to €50,000.</p>
<b>Match Funding:</b>	10%
<b>Contact:</b>	<p><b>Frank Stafford</b> A/Senior Engineer Capital Delivery Office &amp; Parks Tel: 056-7794441 Email: frank.stafford@kilkennycoco.ie</p>



# Small Business Vacant Premises Incentive Scheme

**Funding Authority:** *Kilkenny County Council*  
**Application Process:** *Expression of Interest followed by formal application.*

## ELIGIBLE WORKS

*The purpose of the 'Small Business Vacant Premises Incentive Scheme' is to give an incentive, to a start up business or a small business expanding, to occupy previously vacant commercial property. Entry costs are lowered through a grant related to the level of rates payable on the property (not exceeding €5000p.a.). The grant is based on a correlation to the business's commercial rates paid on a reducing basis of 75%, 50% and 25%, over a three year period. This scheme will allow a business to receive up to €7500 over the three years of the scheme.*

### Applicants must meet the following criteria:

1. The applicant business must occupy commercial premises that have been vacant for at least 6 months prior to the applicants letting.
2. The applicant business must not have traded in a similar business or premises used for the same purpose within a three kilometre radius prior to opening.
3. The following business categories are excluded: Betting shops, Casinos, Head Shops, Adult shops, Amusement arcades, Nightclubs/Private members clubs, Moneylenders, Pawn brokers or Cash for Gold Shops, Liquid Tobacco / Electric cigarettes Shops, Discount Shops, Tattoo parlours, Sunbed /Tanning studio, Fast Food Takeaways (including franchises) and pop up shops.



<b>Target Group:</b>	Small Business Owners occupying previously vacant commercial property where rates bill €5000 or less.		
<b>Budget:</b>	Up to €7,500 (over 3 years)	<b>Closing Date:</b>	Ongoing
<b>Match Funding:</b>	75% grant Year 1, 50% grant Year 2, 25% grant Year 3		
<b>Contact:</b>	<b>Economic Development Officer,                  Local Enterprise Office                  Kilkenny County Council.                  Tel: 056-7752662                  Email: info@leo.kilkennycoco.ie</b>		

<https://www.localenterprise.ie/Kilkenny/Financial-Supports/Small-Business-Vacant-Premises-Scheme/>



# Town & Village Renewal Scheme

**Funding Authority:** *Town & Village is funded by Department of Rural and Community Development.*  
**Application Process:** *Expression of Interest following Council Advertisement. Applications developed with communities & submitted by Kilkenny County Council to the Department.*

## ELIGIBLE WORKS

*Successful expression of Interest Application will demonstrate close collaboration between communities and business interests in the design and delivery of proposed projects and must have the support of the Local Authority.*

**Examples:** Revitalisation of Rural Towns and villages to include projects such as Remote Working Hubs, Community Café & Shops, Community Gardens, Enhancement of Streetscape, Youth Centres & Playgrounds



<b>Target Group:</b>	Towns/Villages population under 10,000
<b>Grant Amount:</b>	€250,000-€500,000
<b>Contact:</b>	<b>Kilkenny County Council, Community Department</b>  Tel: 056-7794920 Email: <a href="mailto:community@kilkennycoco.ie">community@kilkennycoco.ie</a>



## Vacant Property Refurbishment Grant (Croí Cónaithe Towns Fund)

**Funding Authority:** *Kilkenny County Council*  
**Application Process:** *Application form*

### ELIGIBLE WORKS

*The Vacant Property Refurbishment Grant is a grant you may qualify for if you already own or intend to purchase a vacant residential property or a former commercial property which you intend to convert for residential purposes (subject to relevant Planning consents) and bring back into use either as your permanent home or as a rental property. [Note - property must be vacant for a minimum period of 2 years]. A grant of up to €50,000 is available. An additional top-up grant amount of up to €20,000 can also be sought, if the property is derelict i.e. deemed to be structurally unsound and dangerous.*

The Application is by way of completed Application Form together with relevant supporting documentation. The amount of grant allocated will be based on the proposed **qualifying** works and pre-approval will issue to you from the Local Authority prior to work commencing. The grant monies will be paid out after you notify the Local Authority that works are completed and on receipt of vouched expenditure following a final inspection by the Local Authority. In addition, the property may also qualify for a grant under the SEAI Better Energy Home Scheme.



*Vacant Dwelling Kilmacow Co. Kilkenny*

<b>Target Group:</b>	Individuals who own/inherit or intends to acquire vacant or a derelict property with the intent of bringing it back into use for residential purposes.		
<b>Budget:</b>	Up to max of €50,000 for Vacant. Or up to €70,000 if Vacant & Derelict.	<b>Closing Date:</b>	Grant on-going throughout the year.
<b>Match Funding:</b>	None		
<b>Contact:</b>	Tel: 056-7794410 Email: vacanthomes@kilkennycoco.ie		

Further details available on the Council website at <https://www.kilkennycoco.ie/eng/services/planning/town-regeneration/vacant-homes-refurbishment-grant-scheme-croi-conaithe-towns-fund.html>



*Notes:*



Kilkenny County Council

**KILKENNY COUNTY COUNCIL SUPPORTS CLIMATE ACTION**

Where relevant, grant actions should help to build climate resilient communities, and protect people, ecosystems, businesses, infrastructure and buildings from climate change.



# Kilkenny Going Green



An Roinn Forbartha Tuaithe agus Pobail  
Department of Rural and Community Development



Clár Éire Ildánach  
Creative Ireland Programme  
2017-2022



An Roinn Cultúir, Oidhreachta agus Gaeltachta  
Department of Culture, Heritage and the Gaeltacht

